

# County of Madera

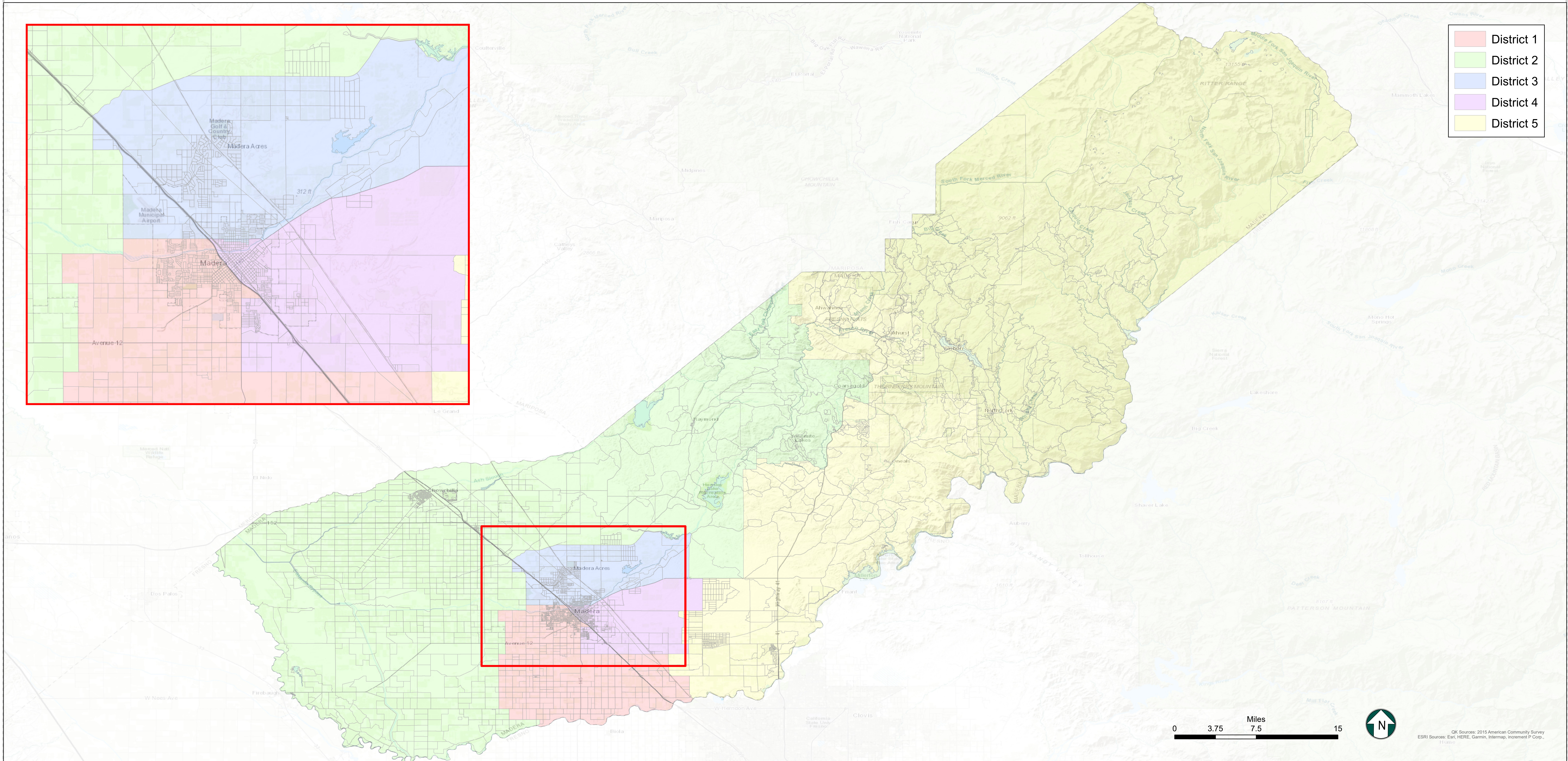
## Proposed Supervisorial District Boundary Revision

**Map 4**

District	Total Population	Ideal Population	Deviation from Ideal	Percent Deviation from Ideal
1	30,222	30,223	-1	0.00%
2	30,213	30,223	-10	-0.03%
3	30,234	30,223	11	0.04%
4	30,212	30,223	-11	-0.04%
5	30,232	30,223	9	0.03%
<b>Total:</b>	<b>151,113</b>	<b>151,115</b>		

Deviation between Largest and Smallest District    0.1%

Source: U.S. Census Bureau 2020 Decennial Census Data





**Citizen Voting Age Population  
Map 4**

District	Total Population	Hispanic or Latino	Not Hispanic or Latino	Not Hispanic or Latino									
				American Indian or Alaska Native Alone	Asian Alone	Black or African American Alone	Native Hawaiian or Other Pacific Islander Alone	White Alone	American Indian or Alaska Native and White	Asian and White	Black or African American and White	American Indian or Alaska Native and Black or African American	Remainder of Two or More Race Responses
1	16,461	8,694 52.8%	7,762 47.2%	71 0.4%	483 2.9%	600 3.6%	1 0.0%	6,299 38.3%	105 0.6%	27 0.2%	64 0.4%	0 0.0%	71 0.4%
2	18,305	4,957 27.1%	13,319 72.8%	228 1.2%	546 3.0%	162 0.9%	34 0.2%	11,946 65.3%	257 1.4%	37 0.2%	84 0.5%	0 0.0%	31 0.2%
3	15,030	9,701 64.5%	5,281 35.1%	37 0.2%	193 1.3%	493 3.3%	0 0.0%	4,205 28.0%	110 0.7%	4 0.0%	55 0.4%	25 0.2%	93 0.6%
4	13,135	9,295 70.8%	3,839 29.2%	40 0.3%	116 0.9%	1,308 10.0%	0 0.0%	2,269 17.3%	41 0.3%	30 0.2%	0 0.0%	0 0.0%	33 0.3%
5	23,157	4,141 17.9%	19,030 82.2%	529 2.3%	447 1.9%	229 1.0%	4 0.0%	17,377 75.0%	196 0.8%	93 0.4%	60 0.3%	0 0.0%	45 0.2%
<i>Total:</i>	86,088	36,788 42.7%	49,231 57.2%	905 1.1%	1,785 2.1%	2,792 3.2%	39 0.0%	42,096 48.9%	709 0.8%	191 0.2%	263 0.3%	25 0.0%	273 0.3%