

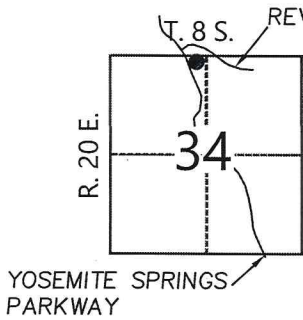
CORNER RECORD

Agency Index _____

Document Number _____

City of MADERA (UNINCORPORATED) County of MADERA, California

Brief Legal Description LOTS 123 AND 124 PER MAP OF TRACT NO. 168 RECORDED IN BOOK 16 OF MAPS PAGES 37-70, MADERA COUNTY RECORDS



CORNER TYPE

- Government Corner Control
 Meander Property
 Rancho Other

Date of Survey 2/25/2021

COORDINATES (Optional)

N. _____ E. _____
 Elevation _____
 Units Metric U.S. Survey Foot
 Horizontal Datum _____
 Zone _____ Epoch Date _____
 Vertical Datum _____
 Complies with Public Resources Code §§8801-8819
 Complies with Public Resources Code §§8890-8902

- PLS Act Ref.:** 8765(d) 8771 8773 Other:
Corner/Monument: Left as found Established Rebuilt Pre-Construction
 Found and tagged Reestablished Referenced Post-Construction

Narrative of corner identified and monument as found, set, reset, replaced, or removed:

See sheet #2 for description(s):

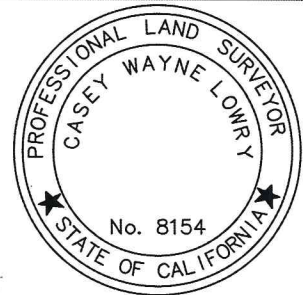
SEE SHEET 2

SURVEYOR'S STATEMENT

This Corner Record was prepared by me or under my direction in conformance with

the Professional Land Surveyors' Act on 03/11/2021

Signed Casey W Lowry (P.L.S.) or R.C.E. No. 8154



COUNTY SURVEYOR'S STATEMENT

This Corner Record was received 03/10/2021

and examined and filed 3/13/2021

Signed Garland R. Shaw P.L.S. or R.C.E. No. 4837

Title COUNTY SURVEYOR

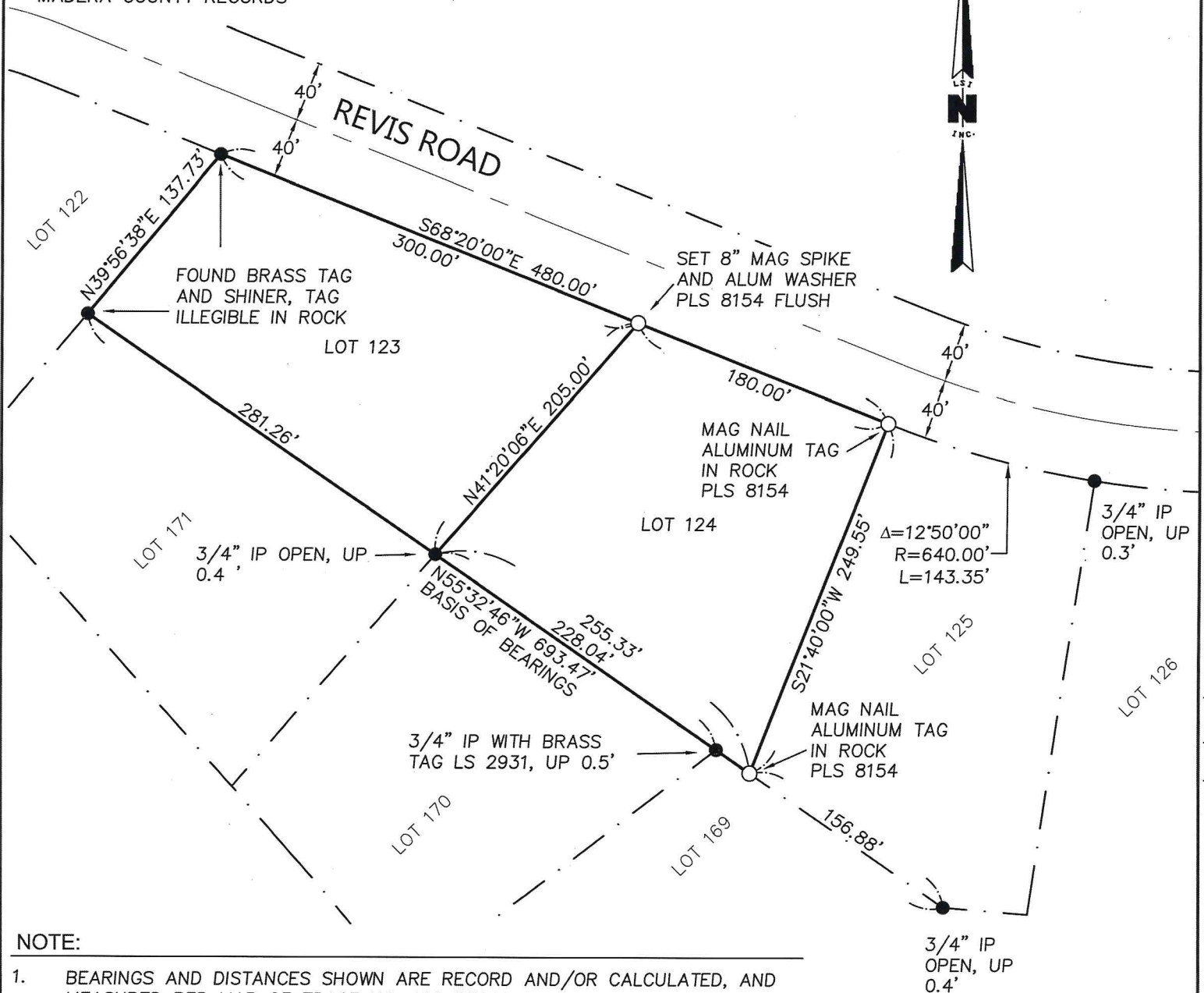
County Surveyor's Comment

No comments!



BASIS OF BEARINGS

THE SOUTH LINE OF LOTS 123, 124, AND 125 PER TRACT 168, YOSEMITE LAKES PARK RECORDED IN BOOK 16, MAPS, PAGES 37-70 MADERA COUNTY RECORDS



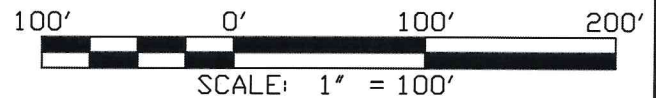
NOTE:

- BEARINGS AND DISTANCES SHOWN ARE RECORD AND/OR CALCULATED, AND MEASURED PER MAP OF TRACT NO. 168 RECORDED IN BOOK 16 OF MAPS AT PAGES 37-70, MADERA COUNTY RECORDS.

LEGEND:

- FOUND MONUMENT AS NOTED
- SET MONUMENT AS NOTED

M.C.R. MADERA COUNTY RECORDS
 M.C.O.R. MADERA COUNTY OFFICIAL RECORDS
 CFR CALCULATED FROM RECORD



43589 HILLTOP LANE TEL (559) 760-0661
 AHWAHNEE, CA 93601 casey@lowrysurveys.com