

# CORNER RECORD

City of Coarsegold Document Number \_\_\_\_\_  
County of Madera, California  
Brief Legal Description Lot 1139 of Yosemite Lakes Park, Book 16 of Maps at Page 37-70, MCR

Section 34  
T8S, R20E,  
MDM

### CORNER TYPE

Government Corner  Control   
Meander  Property   
Rancho  Other   
Date of Survey 03/02/08

### COORDINATES (Optional)

N. \_\_\_\_\_  
E. \_\_\_\_\_  
Zone \_\_\_\_\_ NAD27  NAD83  
NAD83 Epoch \_\_\_\_\_  
Elevation \_\_\_\_\_  
Vert Datum: NGVD29  NADV88   
Meas. Units: Metric  Imperial

Corner - Left as found  Found and tagged  Established  Reestablished  Rebuilt

### Identification and type of corner found: Evidence used to identify or procedure used to establish or reestablish the corner:

Found and accepted 3/4" iron pipes tagged LS2931, or as noted, per map of Yosemite Lakes Park, Bk 16 of Maps, Pgs 37-70, MCR. Re-established missing corner monument using the monuments found and bearings and distances as shown on the record map.

(See sketch, Page 2)

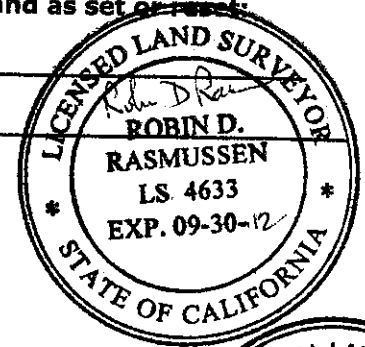
### A description of the physical condition of the monument as found and as set or reset:

Set 3/4" x 30" iron pipe tagged LS4633 up 12"

(See sketch, Page 2)

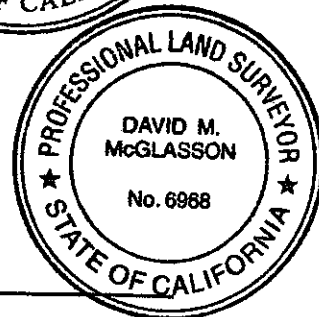
### SURVEYOR'S STATEMENT

This Corner Record was prepared by me or under my direction in conformance with the Land Surveyor's Act on January 12, 2012  
Signed Robin D. Rasmussen PLS No: 4633

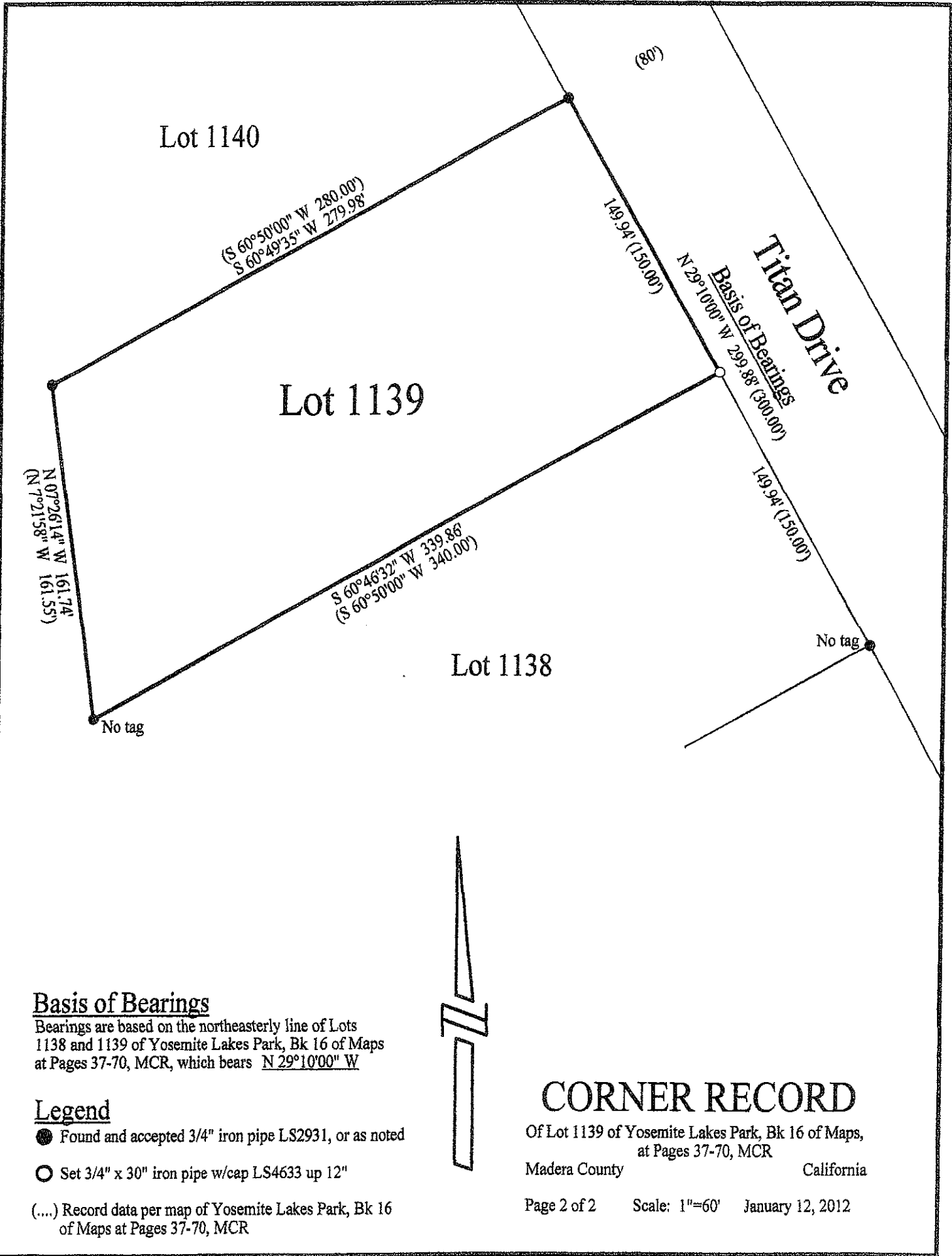


### COUNTY SURVEYOR'S STATEMENT

This Corner Record was received 2/10 2012 and examined  
and filed 2/28 2012  
Signed David M. McGlasson PLS No: 6968  
Title Acting County Surveyor



### County Surveyor's Comment



Lot 1140

(S 60° 50' 00" W 280.00')  
 (S 60° 49' 35" W 279.98')

Lot 1139

(N 07° 26' 14" W 161.74')  
 (N 7° 21' 58" W 161.55')

(S 60° 46' 32" W 339.86')  
 (S 60° 50' 00" W 340.00')

Lot 1138

(80')

149.94' (150.00')

N 29° 10' 00" W 299.88' (300.00')  
 Basis of Bearings

Titan Drive

149.94' (150.00')

No tag

No tag



**Basis of Bearings**

Bearings are based on the northeasterly line of Lots 1138 and 1139 of Yosemite Lakes Park, Bk 16 of Maps at Pages 37-70, MCR, which bears N 29° 10' 00" W

**Legend**

- Found and accepted 3/4" iron pipe LS2931, or as noted
- Set 3/4" x 30" iron pipe w/cap LS4633 up 12"
- (...) Record data per map of Yosemite Lakes Park, Bk 16 of Maps at Pages 37-70, MCR

**CORNER RECORD**

Of Lot 1139 of Yosemite Lakes Park, Bk 16 of Maps, at Pages 37-70, MCR

Madera County California