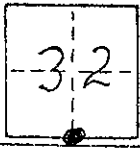


# CORNER RECORD

COUNTY OF MAPERA T. 8 R. 20 MDBE MERIDIAN CALIFORNIA  
 CORNER TYPE: GOVT. CORNER  MEANDER  RANCHO  CONTROL  OTHER   
 CORNER IDENTIFICATION -- DATE OF VISIT 3-4-80 19\_\_



S 1/4 COR SEC 32 8/20

CORNER -- LEFT AS FOUND  FOUND AND TAGGED  REESTABLISHED OBLITERATED CORNER  REBUILT

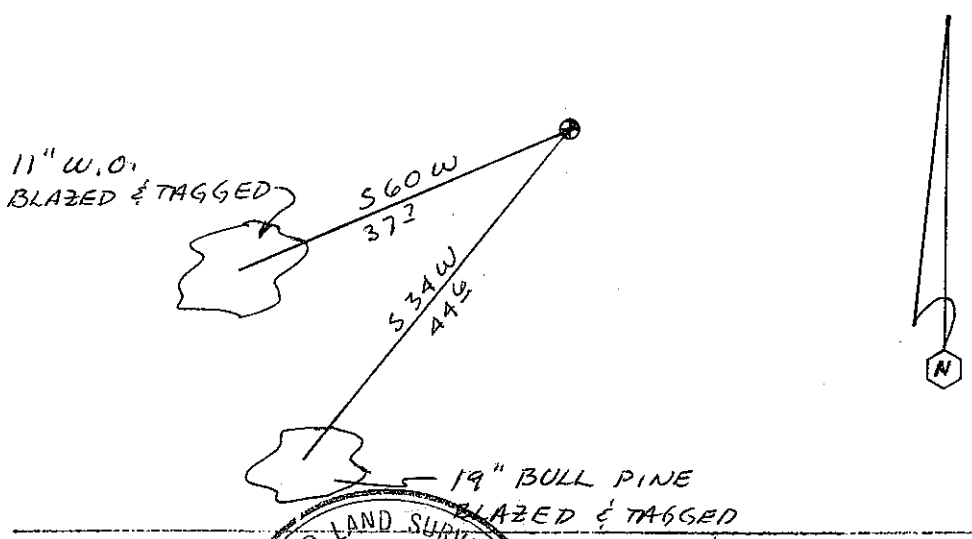
PHYSICAL DESCRIPTION OF CORNER FOUND; EVIDENCE AND METHOD USED TO IDENTIFY OR REESTABLISH

SET 3/4" I.P., LS 4546  
 SET BY SINGLE PROPORTION

PHYSICAL DESCRIPTION OF MONUMENTS REBUILT OR PERPETUATED

CALIFORNIA COORDINATE SYSTEM ORDER: FIRST  SECOND  THIRD   
 STATIONS USED: NGS (USC & GS)  STATE  COUNTY  OTHER  STATION \_\_\_\_\_ STATION \_\_\_\_\_  
 ZONE \_\_\_\_\_ ELEVATION \_\_\_\_\_ NORTHINGS (Y) \_\_\_\_\_ EASTINGS (X) \_\_\_\_\_

SKETCH: (Include reference tie or witness points, remarks and topo of area)



THIS CORNER RECORD PREPARED BY ME OR UNDER MY DIRECTION IN CONFORMANCE WITH THE LAND SURVEYORS ACT ON \_\_\_\_\_ 19\_\_  
 SIGNED: Robert K. Goodner  
 L.S. or P.S. No. LS 4546  
 SURVEYOR'S CERTIFICATE  
 STATE OF CALIFORNIA

COUNTY SURVEYOR'S CERTIFICATE  
 THE CORNER RECORD WAS RECEIVED \_\_\_\_\_ 19\_\_ AND EXAMINED AND FILED \_\_\_\_\_ 19\_\_  
 BY \_\_\_\_\_  
 TITLE: \_\_\_\_\_  
 DOCUMENT No. \_\_\_\_\_  
 STATEMENT ON BACK OF SHEET YES  NO