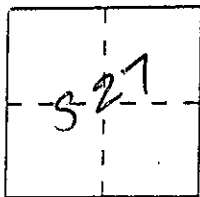


CORNER RECORD

Document Number _____

City of _____ County of Madera, California

Brief Legal Description Lot 21 of Yosemite Lakes Park situated in the
5 1/2 Sec 27, T8S, R20E, M.D.B. & M.



CORNER TYPE

Government Corner Control
Meander Property
Rancho Other
Date of Survey 2/4/99

COORDINATES (Optional)

N. _____
E. _____
Zone _____ Datum _____
Elev. _____

Corner — Left as found Found and tagged Established Reestablished Rebuilt

Identification and type of corner found: Evidence used to identify or procedure used to establish or reestablish the corner:

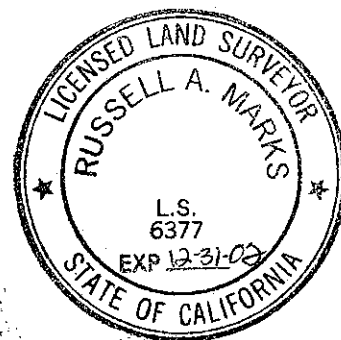
Reset the southwesterly corner of Lot 21, based on
ties to adjoining monuments. See sketch on reverse.
Reference to Map of Tract No 168, Yosemite
Lakes Park, Volume 16, Pages 37 to 70 Inc.
Madera Co. Records.

A description of the physical condition of the monument as found and as set or reset: Set 5/8" diameter
steel bar with plastic cap stamped LS 6377

SURVEYOR'S STATEMENT

This Corner Record was prepared by me or under my direction in conformance with
the Land Surveyors' Act on March 2 19 99.

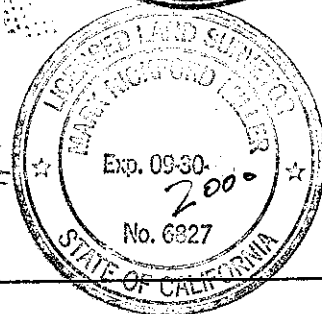
Signed Russell A. Marks L.S. or R.C.E. Number LS 6377



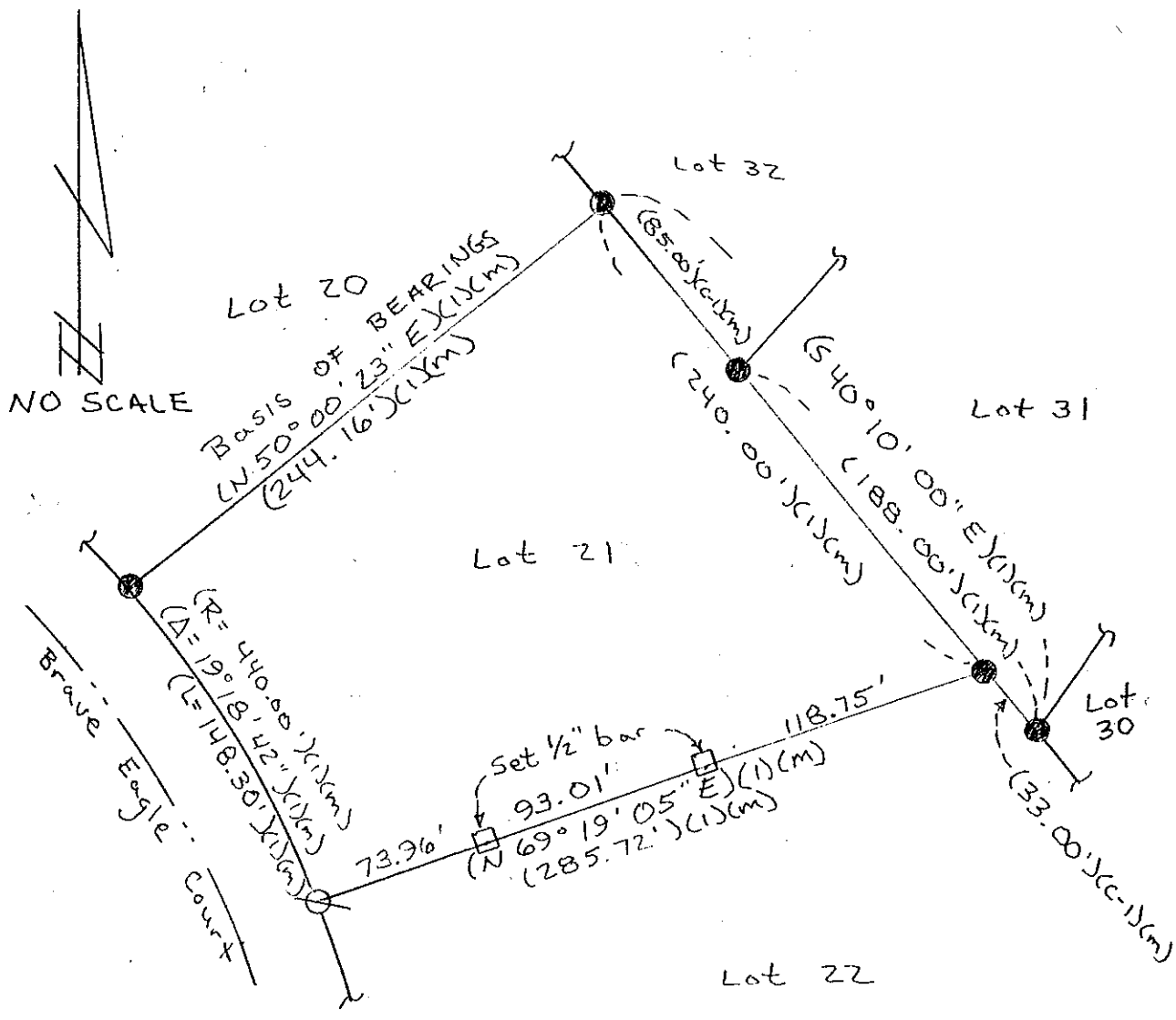
COUNTY SURVEYOR'S STATEMENT

This Corner Record was received 3/15/ 19 99 and examined
and filed 18 MARCH 19 99.

Signed [Signature] Title Asst. County Surveyor



County Surveyor's Comment _____



(1) Map of Tract No. 168
Yosemite Lakes Park
Volume 16, Pages 37 thru 70
Madera County Records.

- (m) Measured
- Found 3/4" iron pipe, per (1)
 - ∅ Set 5/8" steel bar with Plastic Cap, LS 6377

Freeman & Seaman
Land Surveyors