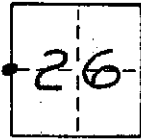


# CORNER RECORD

COUNTY OF Madera T. 8 S. R. 20 E. Mt. Diablo Base E MERIDIAN CALIFORNIA  
 CORNER TYPE: GOVT. CORNER  MEANDER  RANCHO  CONTROL  OTHER   
 CORNER IDENTIFICATION — DATE OF VISIT 26 Feb 19 75



*West 1/4 corner of section 26*

CORNER — LEFT AS FOUND  FOUND AND TAGGED  REESTABLISHED OBLITERATED CORNER  REBUILT

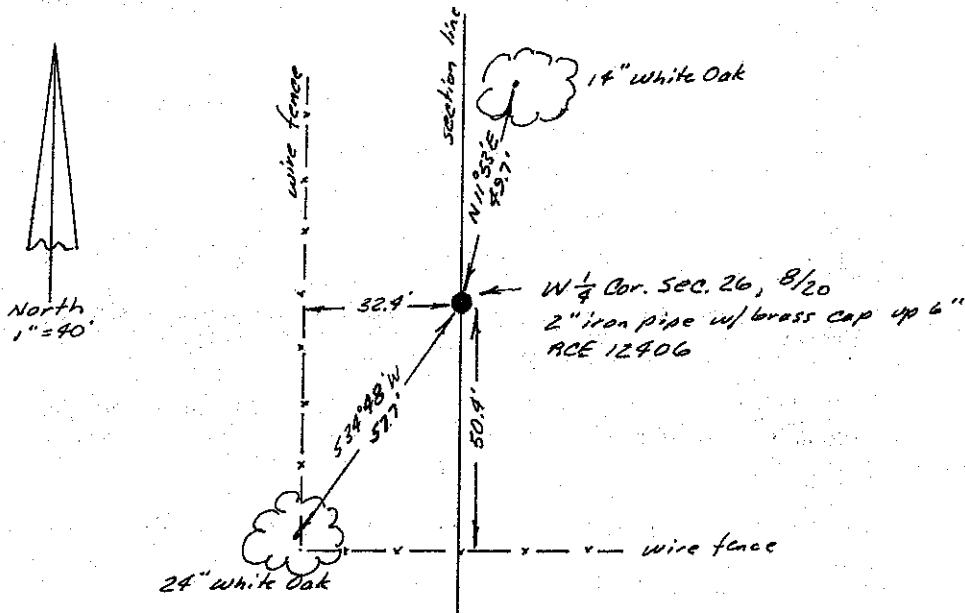
PHYSICAL DESCRIPTION OF CORNER FOUND; EVIDENCE AND METHOD USED TO IDENTIFY OR REESTABLISH

*2" iron pipe with Brass Cap stamped R.C.E. 12406, up 6"  
 Accepted per ammended Record of Survey filed in Book 14,  
 Page 9, of Madera County Records.*

PHYSICAL DESCRIPTION OF MONUMENTS REBUILT OR PERPETUATED

CALIFORNIA COORDINATE SYSTEM ORDER: FIRST  SECOND  THIRD   
 STATIONS USED: NGS (USC & GS)  STATE  COUNTY  OTHER  STATION \_\_\_\_\_ STATION \_\_\_\_\_  
 ZONE \_\_\_\_\_ ELEVATION \_\_\_\_\_ NORTHINGS (Y) \_\_\_\_\_ EASTINGS (X) \_\_\_\_\_

SKETCH: (Include reference tie or witness points, remarks and topo of area)



### SURVEYOR'S CERTIFICATE

THIS CORNER RECORD WAS PREPARED BY ME OR UNDER MY DIRECTION IN CONFORMANCE WITH THE LAND SURVEYORS ACT ON Feb 26 19 75

SIGNED: J. E. McPherson  
 L.S. or R.C.E. No. 2854

SEAL

### COUNTY SURVEYOR'S CERTIFICATE

THE CORNER RECORD WAS RECEIVED Mar 4 19 75 AND EXAMINED AND FILED Mar 4 19 75

BY: Albert O. Grote  
 TITLE: County Engineer

DOCUMENT No. 74-24-12

STATEMENT ON BACK OF SHEET

YES  NO