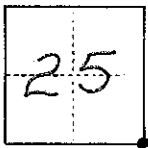


# CORNER RECORD

COUNTY OF Madera T. 8S R. 20E Mt. Diablo MERIDIAN CALIFORNIA

CORNER TYPE: GOV'T. CORNER  MEANDER  RANCHO  CONTROL  OTHER

CORNER IDENTIFICATION — DATE OF VISIT Sep 19 74



CORNER — LEFT AS FOUND  FOUND AND TAGGED  REESTABLISHED OBLITERATED CORNER  REBUILT

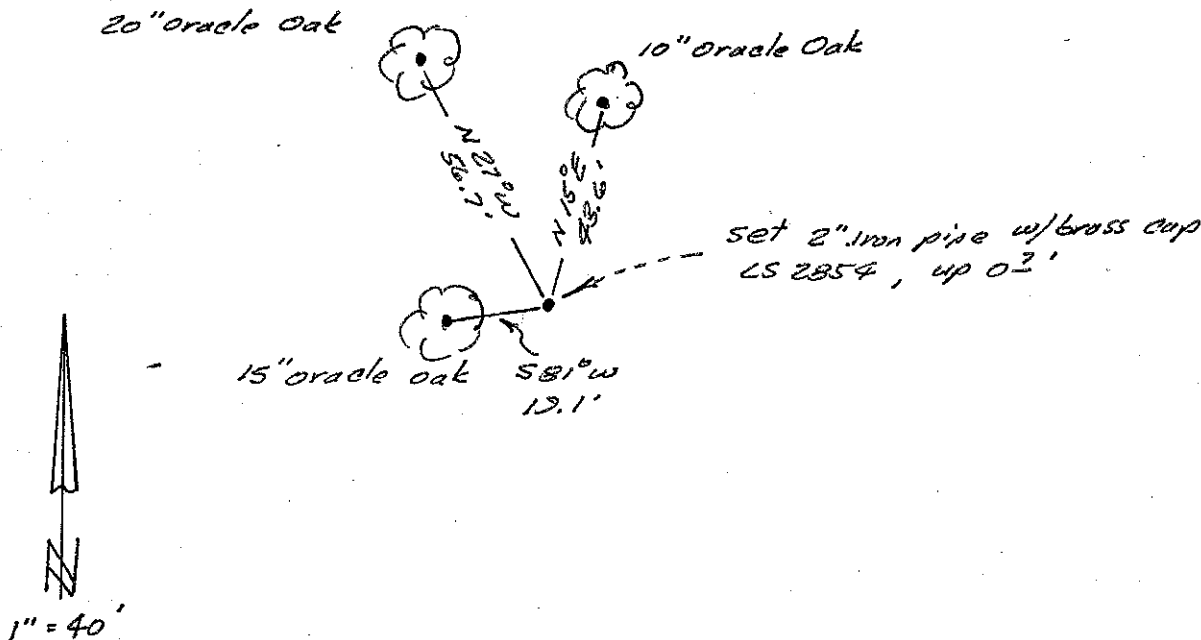
**PHYSICAL DESCRIPTION OF CORNER FOUND; EVIDENCE AND METHOD USED TO IDENTIFY OR REESTABLISH**

set by single proportion method using fd. corners @ NE cor. Sec 25, T8S, 20E & SE cor. sec. 36, T8S, R20E. Set 2" iron pipe w/ brass cap stamped LS 2854, & up 0.2'. Original bearing trees not found.

**PHYSICAL DESCRIPTION OF MONUMENTS REBUILT OR PERPETUATED**

CALIFORNIA COORDINATE SYSTEM ORDER: FIRST  SECOND  THIRD   
 STATIONS USED: NGS (USC & GS)  STATE  COUNTY  OTHER  STATION \_\_\_\_\_ STATION \_\_\_\_\_  
 ZONE \_\_\_\_\_ ELEVATION \_\_\_\_\_ NORTHINGS (Y) \_\_\_\_\_ EASTINGS (X) \_\_\_\_\_

**SKETCH: (Include reference tie or witness points, remarks and topo of area)**



**SURVEYOR'S CERTIFICATE**

THIS CORNER RECORD WAS PREPARED BY ME OR UNDER MY DIRECTION IN CONFORMANCE WITH THE LAND SURVEYORS ACT ON Sept 16 19 74

SIGNED: J. E. P. [Signature]

L.S. or R.C.E. No. 2854

**COUNTY SURVEYOR'S CERTIFICATE**

THE CORNER RECORD WAS RECEIVED Oct. 14 19 74 AND EXAMINED AND FILED Oct. 23 19 74

BY: Albert D. Grote

TITLE: County Engineer

DOCUMENT No. 74-24-2

STATEMENT ON BACK OF SHEET

YES  NO

Note: By a previous survey, R/S Book 14, page 9,  
MCR, a monument for the same corner is  
a 1" I.P.  $N49^{\circ}42'42''W$  172.26 feet from this  
newly set monument.

0820700200