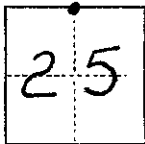


CORNER RECORD

COUNTY OF Madera T. 8 S R. 20 E Mt. Diablo MERIDIAN CALIFORNIA

CORNER TYPE: GOV'T. CORNER MEANDER RANCHO CONTROL OTHER

CORNER IDENTIFICATION — DATE OF VISIT 10 Sep 19 74



CORNER — LEFT AS FOUND FOUND AND TAGGED REESTABLISHED OBLITERATED CORNER REBUILT

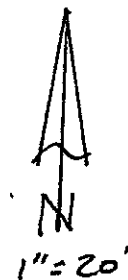
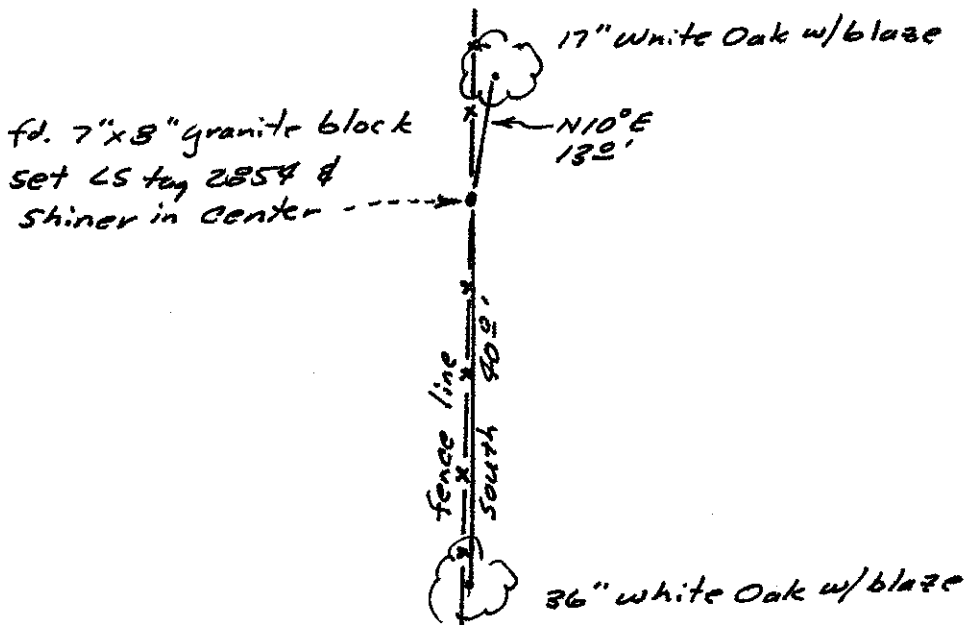
PHYSICAL DESCRIPTION OF CORNER FOUND; EVIDENCE AND METHOD USED TO IDENTIFY OR REESTABLISH

7"x8" Granite block in fence line w/2 witness trees w/blazes.

PHYSICAL DESCRIPTION OF MONUMENTS REBUILT OR PERPETUATED

CALIFORNIA COORDINATE SYSTEM ORDER: FIRST SECOND THIRD
 STATIONS USED: NGS (USC & GS) STATE COUNTY OTHER STATION _____ STATION _____
 ZONE _____ ELEVATION _____ NORTHINGS (Y) _____ EASTINGS (X) _____

SKETCH: (Include reference tie or witness points, remarks and topo of area)



SURVEYOR'S CERTIFICATE

THIS CORNER RECORD WAS PREPARED BY ME OR UNDER MY DIRECTION IN CONFORMANCE WITH THE LAND SURVEYORS ACT ON Sept 16 1974.

SIGNED: J. E. Smith
 L.S. or R.G.E. No.: 2854

SEAL

COUNTY SURVEYOR'S CERTIFICATE

THE CORNER RECORD WAS RECEIVED Oct 14 19 74 AND EXAMINED AND FILED Oct 23 19 74.

BY: Albert O. Banta

TITLE: County Engineer

DOCUMENT No. 74-24-8

STATEMENT ON BACK OF SHEET

YES NO

Note: New monument set at the N1/4 corner of Sec. 25 8/20 differs with the previous location of same corner as per R/s Book 14, page 9, MCR. However, this new location fits closely the location of original witness trees.

0820640300