

# CORNER RECORD

COUNTY OF Madera T. 8S R. 20E Mt. Diablo MERIDIAN CALIFORNIA

CORNER TYPE: GOV'T. CORNER  MEANDER  RANCHO  CONTROL  OTHER

CORNER IDENTIFICATION — DATE OF VISIT Sep 1974

25

CORNER — LEFT AS FOUND  FOUND AND TAGGED  REESTABLISHED OBLITERATED CORNER  REBUILT

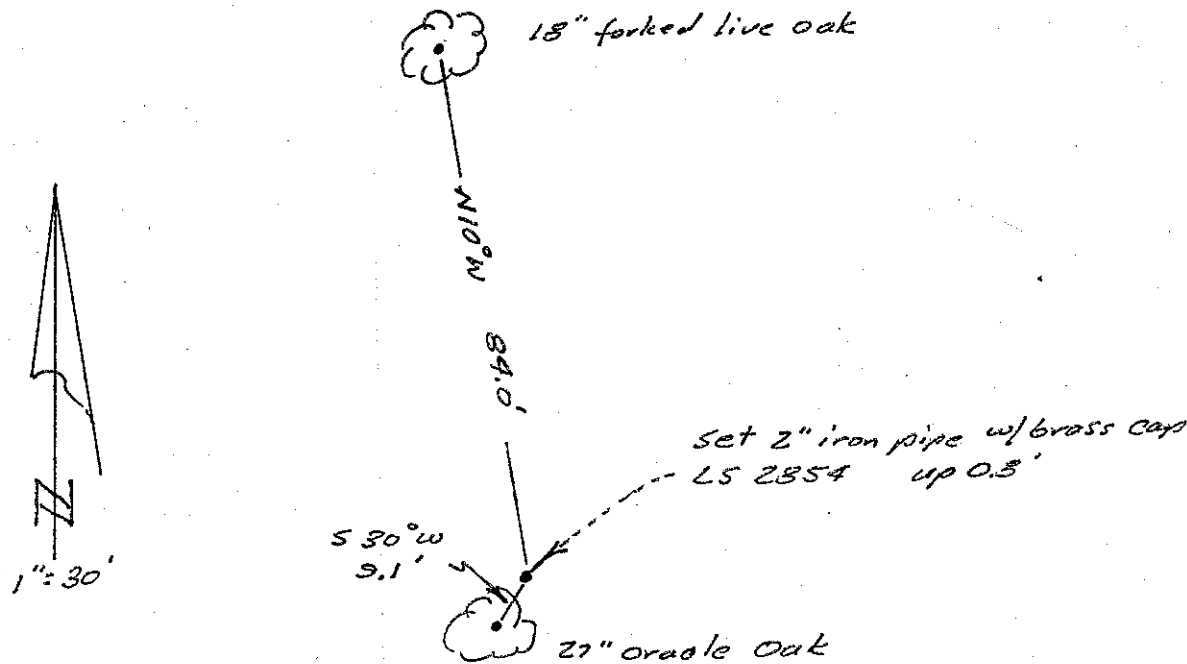
### PHYSICAL DESCRIPTION OF CORNER FOUND; EVIDENCE AND METHOD USED TO IDENTIFY OR REESTABLISH

Set by single proportion between NE cor. sec 25 ft. & SE cor. sec 25 as set. Bearing trees used for ties may have been originals, but not sufficient evidence to ensure as such. Set 2" iron pipe w/ brass cap stamped LS 2854 & up 0.8'.

### PHYSICAL DESCRIPTION OF MONUMENTS REBUILT OR PERPETUATED

CALIFORNIA COORDINATE SYSTEM ORDER: FIRST  SECOND  THIRD   
STATIONS USED: NGS (USC & GS)  STATE  COUNTY  OTHER  STATION \_\_\_\_\_ STATION \_\_\_\_\_  
ZONE \_\_\_\_\_ ELEVATION \_\_\_\_\_ NORTHINGS (Y) \_\_\_\_\_ EASTINGS (X) \_\_\_\_\_

### SKETCH: (Include reference tie or witness points, remarks and topo of area)



#### SURVEYOR'S CERTIFICATE

THIS CORNER RECORD WAS PREPARED BY ME OR UNDER MY DIRECTION IN CONFORMANCE WITH THE LAND SURVEYORS ACT ON Sept 16 1974

SIGNED: J. G. McPheters

L.S. or R.C.E. No. 2854

#### COUNTY SURVEYOR'S CERTIFICATE

THE CORNER RECORD WAS RECEIVED Oct. 14 1974 AND EXAMINED AND FILED Oct 23 1974

BY: Albert O. Grist

TITLE: County Engineer

DOCUMENT No. 74-24-3

STATEMENT ON BACK OF SHEET

YES  NO

Note: By a previous survey, R/S Book 14, page 9, MCR,  
a monument for the same corner is a 2" I.P. w/ Brass  
Cap tagged RCE 12406 N 38° 17' 40" W 200.31 feet from this  
newly set monument

0820700240