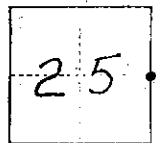


COUNTY OF Madera T. 8 S R. 20 E Mt. Diablo MERIDIAN CALIFORNIA

CORNER TYPE: GOV'T. CORNER  MEANDER  RANCHO  CONTROL  OTHER

CORNER IDENTIFICATION — DATE OF VISIT Sep 19 74



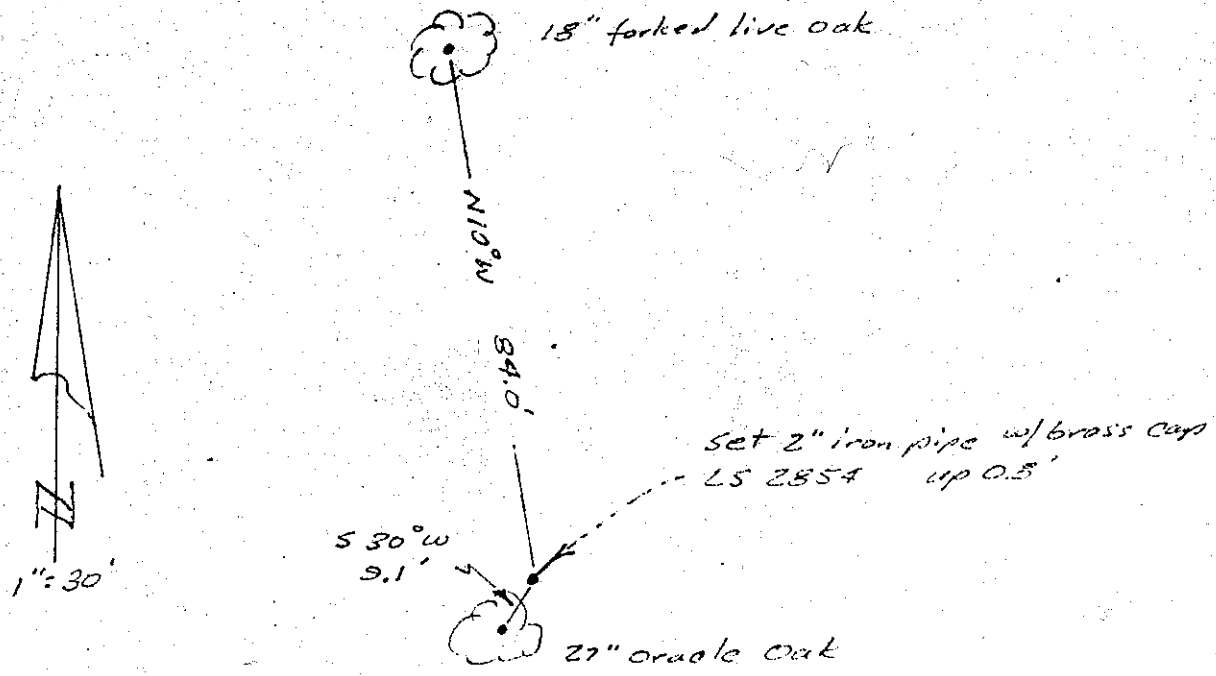
CORNER — LEFT AS FOUND  FOUND AND TAGGED  REESTABLISHED OBLITERATED CORNER  REBUILT

PHYSICAL DESCRIPTION OF CORNER FOUND; EVIDENCE AND METHOD USED TO IDENTIFY OR REESTABLISH  
*Set by single proportion between . NE cor. sec 25 ft. & SE cor. sec 25 as set. Bearing trees used for ties may have been originals, but not sufficient evidence to ensure as such. Set 2" iron pipe w/ brass cap stamped LS 2854 & up 0.8'.*

PHYSICAL DESCRIPTION OF MONUMENTS REBUILT OR PERPETUATED

CALIFORNIA COORDINATE SYSTEM ORDER: FIRST  SECOND  THIRD   
STATIONS USED: NGS (USC & GS)  STATE  COUNTY  OTHER  STATION \_\_\_\_\_ STATION \_\_\_\_\_  
ZONE \_\_\_\_\_ ELEVATION \_\_\_\_\_ NORTHINGS (Y) \_\_\_\_\_ EASTINGS (X) \_\_\_\_\_

SKETCH: (Include reference tie or witness points, remarks and topo of area)



SURVEYOR'S CERTIFICATE

THIS CORNER RECORD WAS PREPARED BY ME OR UNDER MY DIRECTION IN CONFORMANCE WITH THE LAND SURVEYORS ACT ON Sept 16 19 74  
SIGNED J. B. McPherson  
L.S. or P.E. No. 2854

COUNTY SURVEYOR'S CERTIFICATE

THE CORNER RECORD WAS RECEIVED Oct 14 19 74  
AND EXAMINED AND FILED Oct 22 19 74  
BY Michael A. Gault  
TITLE: County Engineer  
DRAWING NO. 74-24-2

STATEMENT ON BACK OF SHEET YES  NO

Note. By a previous survey R/S Book 14, page 7, N.E.R.,  
a monument for the same corner is a 2" I.P. of Brass  
Cap tagged RCE 12406 N 38° 17' 40" W 200.31 feet from this  
newly set monument