

CORNER RECORD

County of MADERA T. 8S R. 20E M.D.R. 1/4 Meridian California

Corner Type: Govt. Corner Meander Rancho Other

Corner Identification _____ Date of Visit Aug. 7th 19 78

211 1/4 Cor. SEC. 21

Corner Left as Found Found and Tagged Reestablished Obliterated Corner Rebuilt

Physical Description of Corner Found; Evidence and Method used to Identify or reestablish
FND. 1" I.P. TAG. R.C.E. 21650

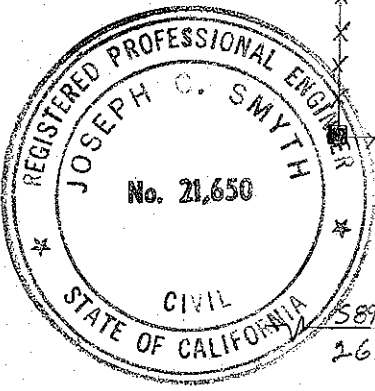
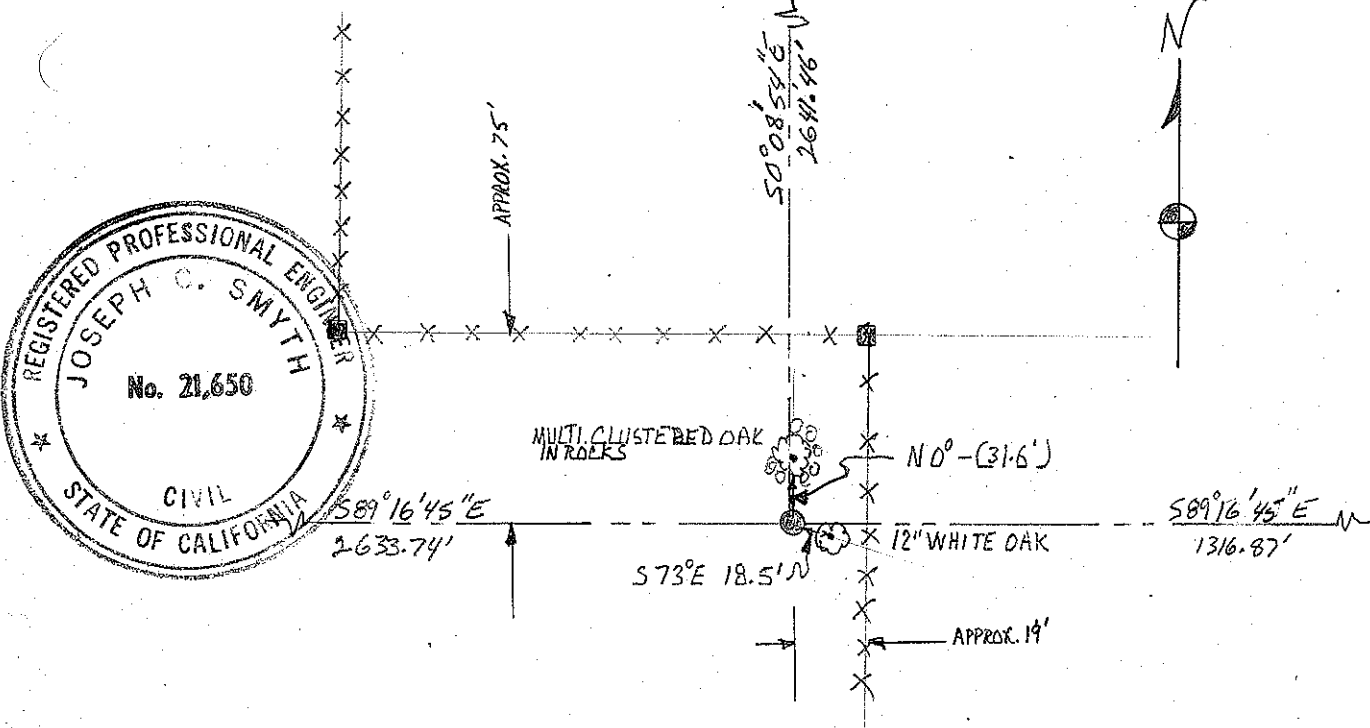
Physical Description of Monuments Rebuilt or Perpetuated
1" I.P.

California Coordinate System Order: First Second Third

Stations used: NOS (USC & GS) State County Other Station _____ Station _____

Zone _____ Elevation _____ Northings (Y) _____ Eastings (X) _____

SKETCH: (Include reference tie or witness points, remarks and topo of area)



SURVEYOR'S CERTIFICATE

This corner record was prepared by me or under my direction in conformance with the Land Surveyors Act on Aug 7 1978.

Signed: Joseph C. Smyth
 L.S. or R.C.E. No.: RCE 21650

COUNTY SURVEYOR'S CERTIFICATE

The Corner Record was received _____ 19 _____ and examined and filed Sept 15 1978.

By: A. Krote
 Title County Engineer
 Document No. _____

CORNER RECORD

County of MADERA T. 2S R. 20E M.D.R. 4 Meridian California

Corner Type: Govt. Corner Meander Rancho Other

Corner Identification S 1/4 Cor. SEC. 21 Date of Visit Aug. 7th 19 78



Corner Left as Found Found and Tagged Reestablished Obliterated Corner Reestablished

Physical Description of Corner Found; Evidence and Method used to Identify or reestablish
FND. 1" I.P. TAG. R.C.E. 21650

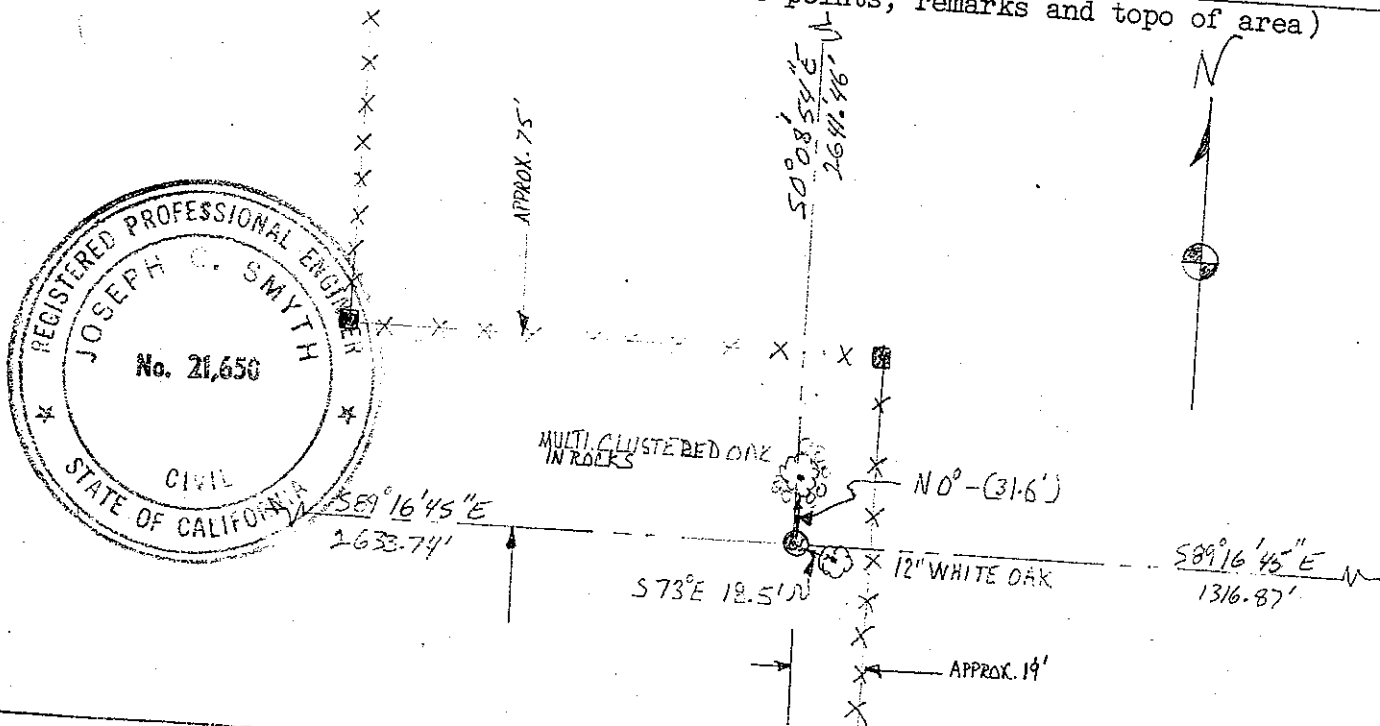
Physical Description of Monuments Rebuilt or Perpetuated
1" I.P.

California Coordinate System Order: First Second Third

Stations used: NOS (USC & GS) State County Other Station Station

Zone Elevation Northings (Y) Eastings (X)

SKETCH: (Include reference tie or witness points, remarks and topo of area)



SURVEYOR'S CERTIFICATE

This corner record was prepared by me or under my direction in conformance with the Land Surveyors Act on Aug 7 1978.

Signed: Joseph C. Smyth
L.S. or R.C.E. No.: RCE 21650

COUNTY SURVEYOR'S CERTIFICATE

The Corner Record was received 19 and examined and filed Sept 15 1978.

By: Albrote
Title County Engineer
Document No.