

CORNER RECORD

County of MADERA T. 8S R. 20E M.D.B. & Meridian California

Corner Type: Govt. Corner  Meander  Rancho  Other

Corner Identification X Date of Visit AUG. 7<sup>th</sup> 19 78

201 CENTER SEC. 21

Corner  Left as Found  Found and Tagged  Reestablished  Obliterated Corner  Rebuilt

Physical Description of Corner Found; Evidence and Method used to Identify or reestablish  
FND. 1" I.P. R.C.E 21650 - SET ON PREVIOUS SURVEY

Physical Description of Monuments Rebuilt or Perpetuated

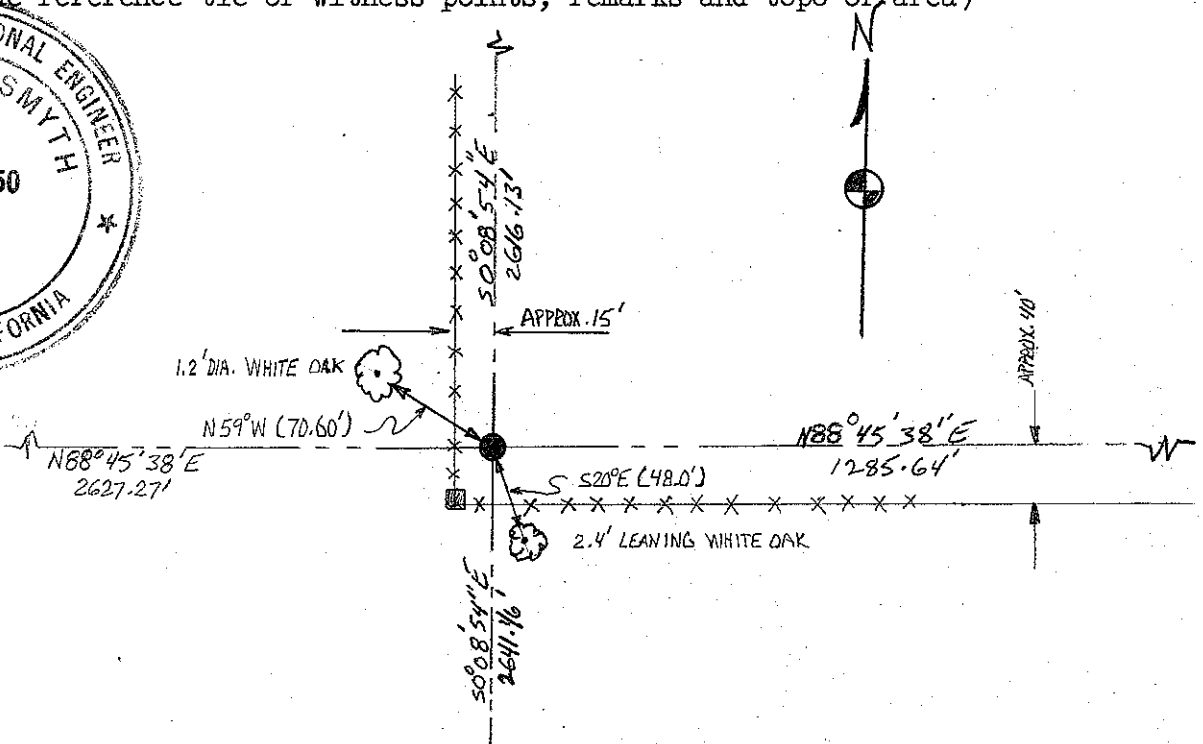
1" I.P.

California Coordinate System Order: First  Second  Third

Stations used: NOS (USC & GS)  State  County  Other  Station      Station     

Zone      Elevation      Northings (Y)      Eastings (X)     

SKETCH: (Include reference tie or witness points, remarks and topo of area)



SURVEYOR'S CERTIFICATE

This corner record was prepared by me or under my direction in conformance with the Land Surveyors Act on Aug 7 19 78.

Signed: Joseph C. Smyth  
L.S. or R.C.E. No.: RCE 21650

COUNTY SURVEYOR'S CERTIFICATE

The Corner Record was received      19      and examined and filed Sept 15 19 78.

By: A. Grote  
Title County Engineer

Document No.

CORNER RECORD

County of MADERA T. 8S R. 20E M.D. B. & Meridian California

Corner Type: Govt. Corner  Meander  Rancho  Other

Corner Identification X Date of Visit AUG. 7<sup>th</sup> 19 78



Corner  Left as Found  Found and Tagged  Reestablished  Obliterated Corner  Rebuilt

Physical Description of Corner Found; Evidence and Method used to Identify or reestablish  
FND. 1" I.P. R.C.E 21650 - SET ON PREVIOUS SURVEY

Physical Description of Monuments Rebuilt or Perpetuated

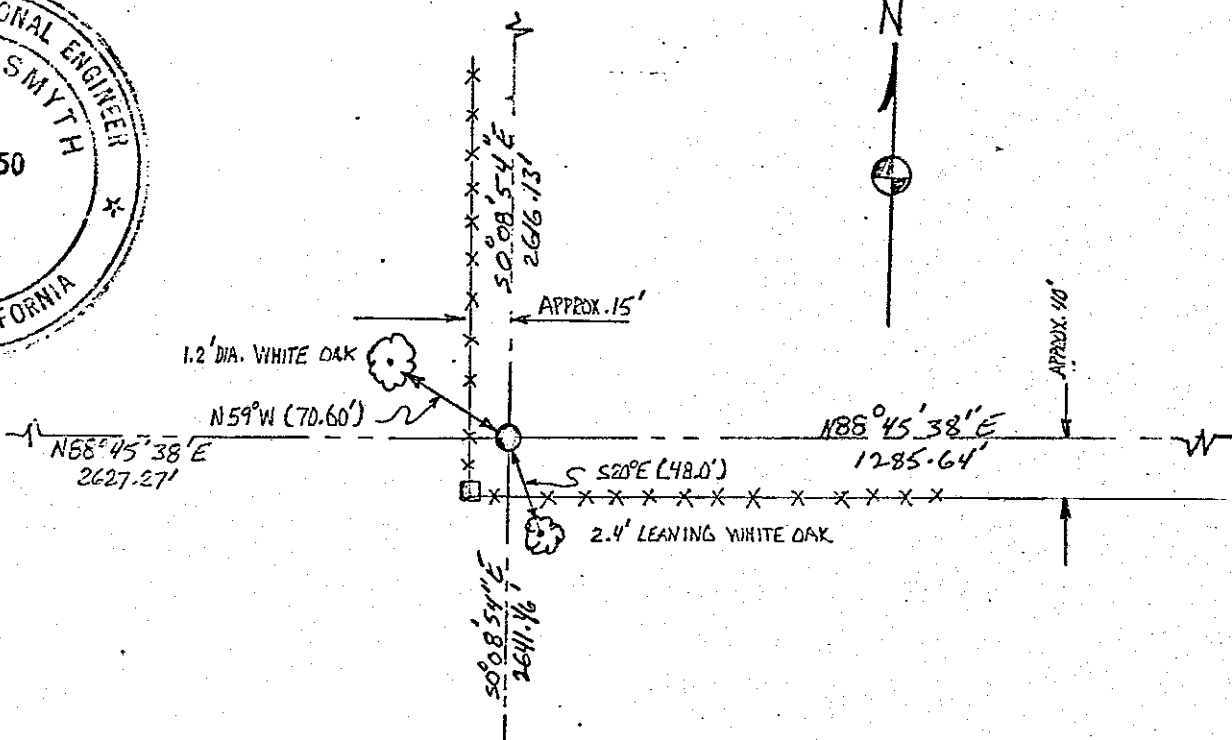
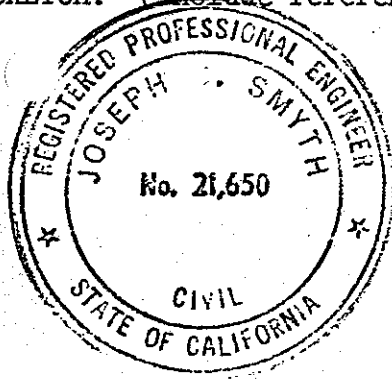
1" I.P.

California Coordinate System Order: First  Second  Third

Stations used: NOS (USC & GS)  State  County  Other  Station \_\_\_\_\_ Station \_\_\_\_\_

Zone \_\_\_\_\_ Elevation \_\_\_\_\_ Northings (Y) \_\_\_\_\_ Eastings (X) \_\_\_\_\_

SKETCH: (Include reference tie or witness points, remarks and topo of area)



SURVEYOR'S CERTIFICATE

This corner record was prepared by me or under my direction in conformance with the Land Surveyors Act on Aug 7 1978.

Signed: Joseph C. Smyth  
L.S. or R.C.E. No.: RCE 21650

original to Engr. 8/24/78

COUNTY SURVEYOR'S CERTIFICATE

The Corner Record was received \_\_\_\_\_ 19 \_\_\_\_\_ and examined and filed \_\_\_\_\_ 19 \_\_\_\_\_.

By: \_\_\_\_\_  
Title \_\_\_\_\_

Document No. \_\_\_\_\_