

CORNER RECORD

COUNTY OF MADERA T. 85 R. 20E M.D.B. MERIDIAN CALIF.

CORNER TYPE: GOV'T. CORNER ( ) MEANDER ( ) RANCHO ( ) CONTROL () OTHER ( )

CORNER IDENTIFICATION --- DATE OF VISIT 10 MAY 1976



S.E. SECTION CORNER SEC 2

$\frac{2}{11/12}$

CORNER -- LEFT AS FOUND () FOUND & TAGGED ( ) REESTABLISHED OBLITERATED CORNER ( )  
REBUILT ( )

PHYSICAL DESCRIPTION OF CORNER FOUND: EVIDENCE & METHOD USED TO IDENTIFY OR REESTABLISH:

1" IRON PIPE TAGGED L.S. 2737 IN ROCK MOUND WITH NO ORIGINAL BEARING TREES.

PHYSICAL DESCRIPTION OF MONUMENTS REBUILT OR PERPETUATED:

LEFT AS FOUND.

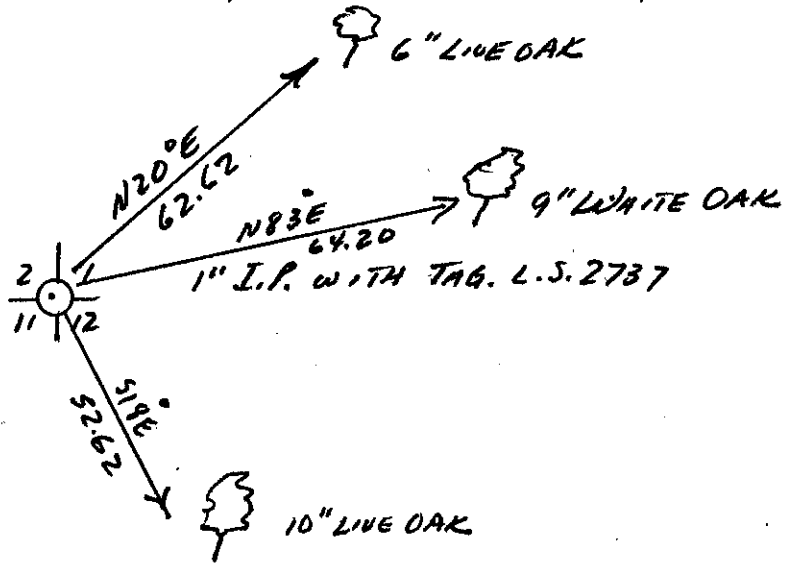
CALIFORNIA COORDINATE SYSTEM ORDER: FIRST ( ) SECOND ( ) THIRD ( )

STATIONS USED: NOS (USC & GS) ( ) STATE ( ) COUNTY ( ) OTHER ( ) STATION \_\_\_\_\_

STATION \_\_\_\_\_ ZONE \_\_\_\_\_ ELEVATION \_\_\_\_\_ NORTHINGS (Y) \_\_\_\_\_

EASTINGS (X) \_\_\_\_\_

SKETCH: (INCLUDE REFERENCE TIE OR WITNESS POINTS, REMARKS AND TOPO OF AREA)

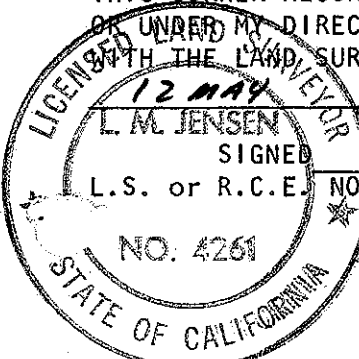


SURVEYOR'S CERTIFICATE

THIS CORNER RECORD WAS PREPARED BY ME OR UNDER MY DIRECTION IN CONFORMANCE WITH THE LAND SURVEYORS ACT ON

12 MAY 1976

L. M. JENSEN  
SIGNED [Signature]  
L.S. or R.C.E. NO. L.S. 4261



SEAL

COUNTY SURVEYOR'S CERTIFICATE

THE CORNER RECORD WAS RECEIVED 5-17-76 AND EXAMINED AND FILED MAY 17 1976

BY: [Signature]  
TITLE: County Engineer

DOCUMENT NO. 76-12-1

STATEMENT ON BACK OF SHEET

YES ( ) NO ()