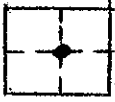


CORNER RECORD

COUNTY OF MADERA T. 8S R. 20E. M.D.B. & C MERIDIAN CALIF.

CORNER TYPE: GOV'T. CORNER () MEANDER () RANCHO () CONTROL () OTHER ()

CORNER IDENTIFICATION --- DATE OF VISIT 10 MAY 19 76



c/4 Sec. 2/8/20

CORNER -- LEFT AS FOUND () FOUND & TAGGED () REESTABLISHED OBLITERATED CORNER ()
REBUILT ()

PHYSICAL DESCRIPTION OF CORNER FOUND: EVIDENCE & METHOD USED TO IDENTIFY OR REESTABLISH:

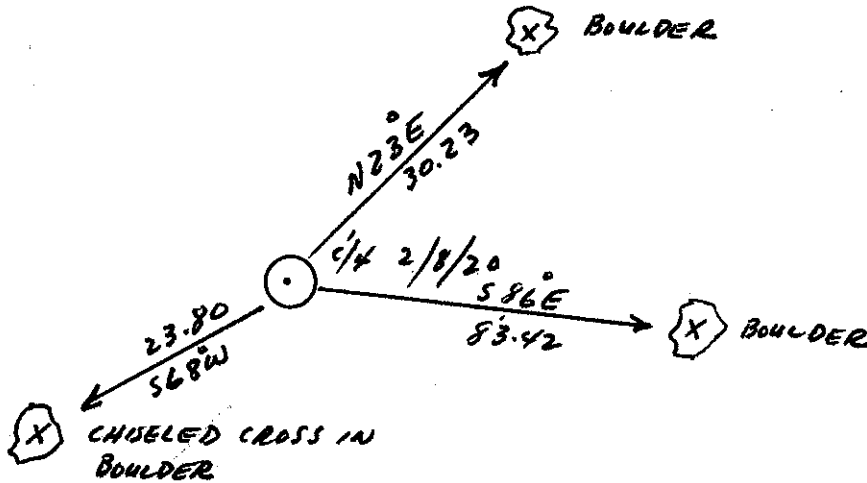
2" BRASS CAP ON 1" IRON PIPE STAMPED R.C.E. 5982
IN ROCK MOUND.

PHYSICAL DESCRIPTION OF MONUMENTS REBUILT OR PERPETUATED:

LEFT AS FOUND.

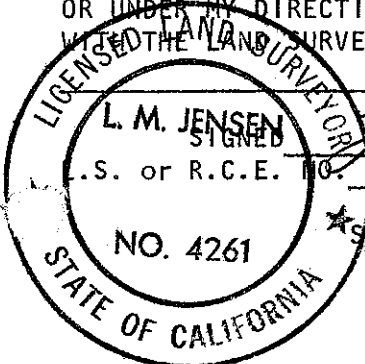
CALIFORNIA COORDINATE SYSTEM ORDER: FIRST () SECOND () THIRD ()
STATIONS USED: NOS (USC & GS) () STATE () COUNTY () OTHER () STATION _____
STATION _____ ZONE _____ ELEVATION _____ NORTHINGS (Y) _____
EASTINGS (X) _____

SKETCH: (INCLUDE REFERENCE TIE OR WITNESS POINTS, REMARKS AND TOPO OF AREA)



SURVEYOR'S CERTIFICATE

THIS CORNER RECORD WAS PREPARED BY ME OR UNDER MY DIRECTION IN CONFORMANCE WITH THE LAND SURVEYORS ACT ON 12 MAY 19 76



L. M. Jensen
L.S. 4261

COUNTY SURVEYOR'S CERTIFICATE

THE CORNER RECORD WAS RECEIVED 5-17-76 AND EXAMINED & FILED MAY 17 1976

BY: A. Grote
TITLE: County Engineer

DOCUMENT NO. 76-12-3
STATEMENT ON BACK OF SHEET
YES () NO ()