

CORNER RECORD

County of MADERA T. 8 S R. 20 E M.D.B.E.M Meridian California

Corner Type: Govt. Corner Meander Rancho Other

Corner Identification _____ Date of Visit MAY 15, 1975



5/4 Cor. Sec. 1

Corner _____ Left as Found Found and Tagged Reestablished Obliterated Corner Rebuilt

Physical Description of Corner Found; Evidence and Method used to Identify or reestablish
FND. 1" I.P. IN ROCK MND. W/TAG L.S. 2229

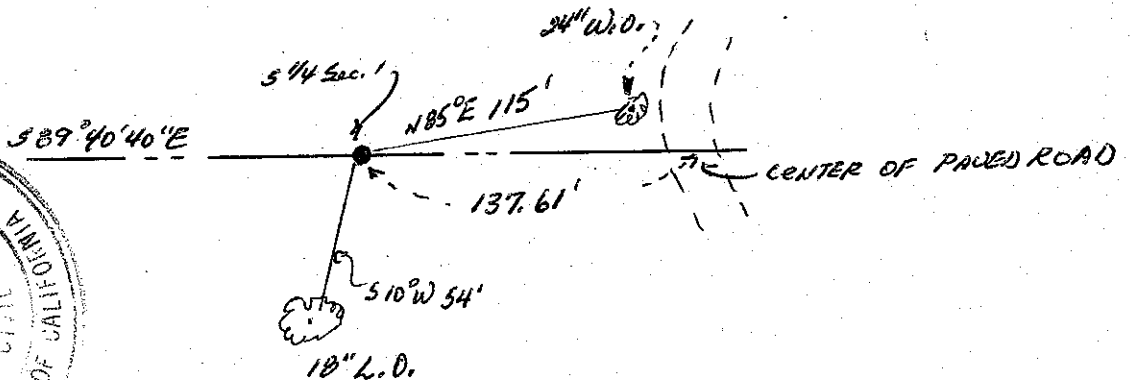
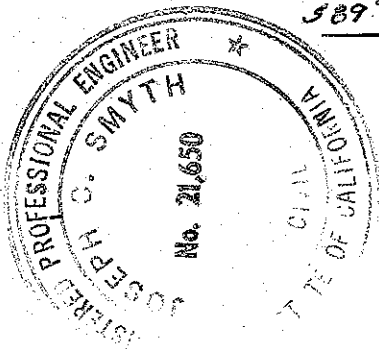
Physical Description of Monuments Rebuilt or Perpetuated

California Coordinate System Order: First Second Third

Stations used: NOS (USC & GS) State County Other Station _____ Station _____

Zone _____ Elevation _____ Northings (Y) _____ Eastings (X) _____

FCH: (Include reference tie or witness points, remarks and topo of area)



SURVEYOR'S CERTIFICATE

This corner record was prepared by me or under my direction in conformance with the Land Surveyors Act on JULY 9 1975.

Signed: Joseph C. Smyth REC 21650

L.S. or R.C.E. No. _____

COUNTY SURVEYOR'S CERTIFICATE

The Corner Record was received July 14 1975 and examined and filed

July 15 1975.
By: Jr. Piller
Title: Civil Engr Asst

Document No. 75-25-01