

CORNER RECORD

COUNTY OF MADERA SEC. 1 T. 8S R. 20E M.D.B. 4 MERIDIAN CALIF.

CORNER TYPE: GOV'T. CORNER ( ) MEANDER ( ) RANCHO ( ) CONTROL ( ) OTHER (  )

CORNER IDENTIFICATION --- DATE OF VISIT 27 FEB. 19 77



1-8-70  
C 1/4 SEC. 1-8-70  
3/4" I.P. TAGGED R.C.E. 16995

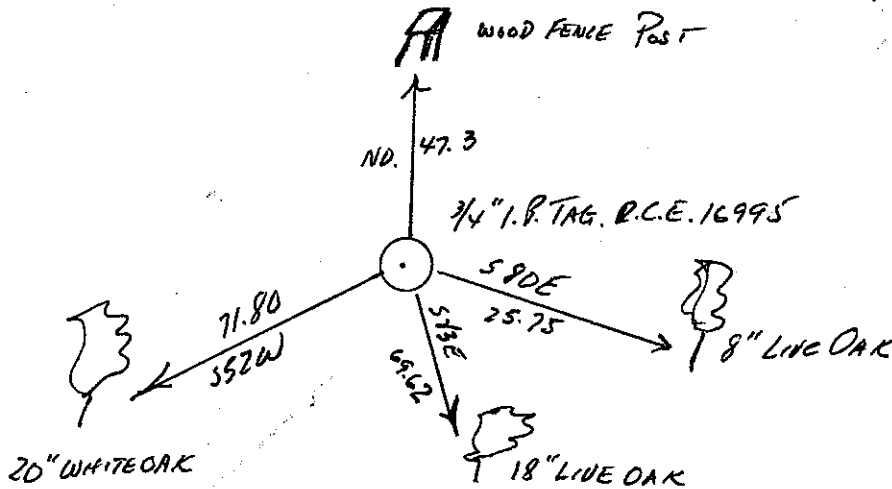
CORNER -- LEFT AS FOUND ( ) FOUND & TAGGED ( ) REESTABLISHED OBLITERATED CORNER ( )  
REBUILT ( )

PHYSICAL DESCRIPTION OF CORNER FOUND: EVIDENCE & METHOD USED TO IDENTIFY OR REESTABLISH:  
3/4" I.P. WITH TAG, MARKED FOR C 1/4 SEC. 1-8/70  
TAGGED R.C.E. 16995

PHYSICAL DESCRIPTION OF MONUMENTS REBUILT OR PERPETUATED:

CALIFORNIA COORDINATE SYSTEM ORDER: FIRST ( ) SECOND ( ) THIRD ( )  
STATIONS USED: NOS (USC & GS) ( ) STATE ( ) COUNTY ( ) OTHER ( ) STATION \_\_\_\_\_  
STATION \_\_\_\_\_ ZONE \_\_\_\_\_ ELEVATION \_\_\_\_\_ NORTHINGS (Y) \_\_\_\_\_  
EASTINGS (X) \_\_\_\_\_

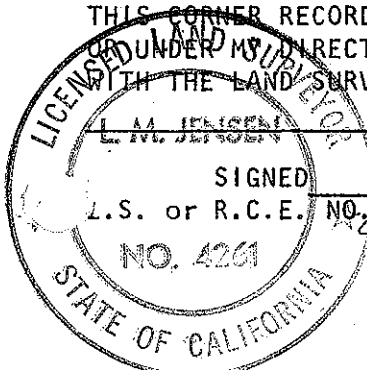
SKETCH: (INCLUDE REFERENCE TIE OR WITNESS POINTS, REMARKS AND TOPO OF AREA)



SURVEYOR'S CERTIFICATE

THIS CORNER RECORD WAS PREPARED BY ME UNDER MY SUPERVISION IN CONFORMANCE WITH THE LAND SURVEYORS ACT ON 75 FEB. 19 77

L. M. JENSEN  
SIGNED [Signature]  
L.S. or R.C.E. NO. 254261



SEAL

COUNTY SURVEYOR'S CERTIFICATE

THE CORNER RECORD WAS RECEIVED 3-1-77 and examined and filed Mar 3 1977

BY: A. Grote  
TITLE: C. Engr.

DOCUMENT NO. 77-63-07  
STATEMENT ON BACK OF SHEET  
YES ( ) NO (  )