

CORNER RECORD

COUNTY OF MADERA T. 8 R. 19 MPB MERIDIAN CALIFORNIA
 CORNER TYPE: GOVT. CORNER MEANDER RANCHO CONTROL OTHER
 CORNER IDENTIFICATION — DATE OF VISIT 12-27 1979



SE COR SEC 26 8/4

CORNER — LEFT AS FOUND FOUND AND TAGGED REESTABLISHED OBLITERATED CORNER REBUILT

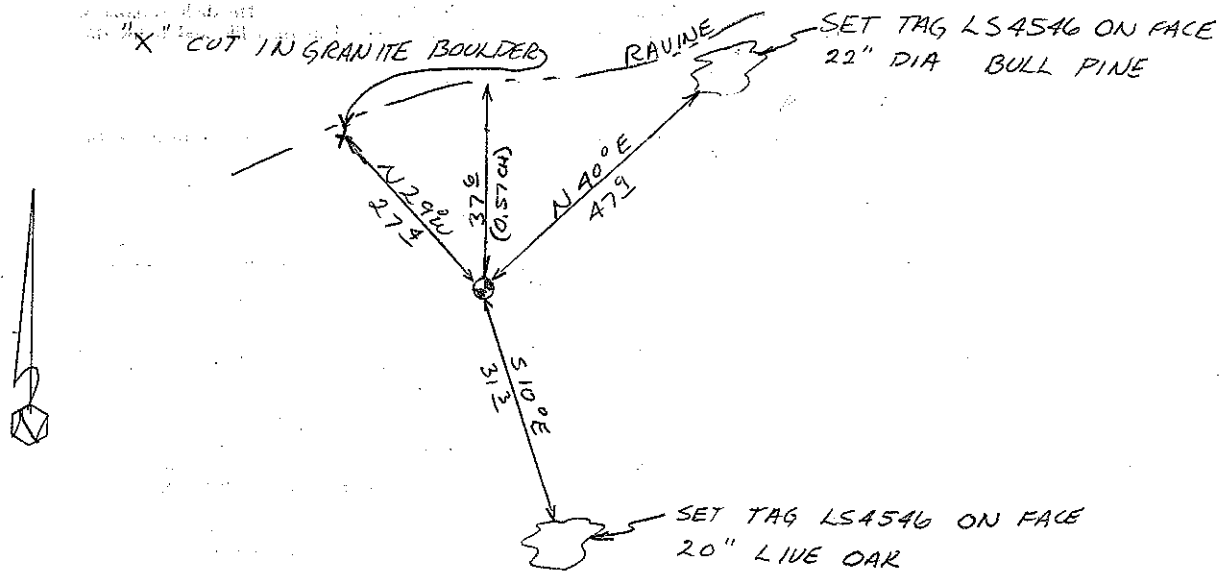
PHYSICAL DESCRIPTION OF CORNER FOUND; EVIDENCE AND METHOD USED TO IDENTIFY OR REESTABLISH

SET 3/4" IP, TAG LS4546
 BUILT ROCK MOUND
 SET: SINGLE PROPORTION EAST & WEST
 NORTH, SOUTH LOCATION DETERMINED FROM TOPO CALLS PER GOVT. NOTES
 37.62 (0.57 CH) SOUTH OF ♀ RAVINE

PHYSICAL DESCRIPTION OF MONUMENTS REBUILT OR PERPETUATED

CALIFORNIA COORDINATE SYSTEM ORDER: FIRST SECOND THIRD
 STATIONS USED: NGS (USC & GS) STATE COUNTY OTHER STATION _____ STATION _____
 ZONE _____ ELEVATION _____ NORTHINGS (Y) _____ EASTINGS (X) _____

SKETCH: (Include reference tie or witness points, remarks and topo of area)



SURVEYOR'S CERTIFICATE

THIS CORNER RECORD WAS PREPARED BY ME OR UNDER MY DIRECTION IN CONFORMANCE WITH THE LAND SURVEYORS ACT ON _____

SIGNED: Robert K. Goodner
 LS 4546

L.S. or R.C.E. No. _____

STATE OF CALIFORNIA

COUNTY SURVEYOR'S CERTIFICATE

THE CORNER RECORD WAS RECEIVED _____ 19____
 AND EXAMINED AND FILED 3/19 1980
 BY: Thomas A. Jackson
 TITLE: County Engineer
 DOCUMENT No. 50660405

STATEMENT ON BACK OF SHEET YES NO