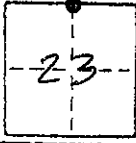


CORNER RECORD

COUNTY OF MADERA T. 8 S R. 19 E H. D. B. S. M. MERIDIAN CALIFORNIA
 CORNER TYPE: GOV'T. CORNER MEANDER RANCHO CONTROL OTHER
 CORNER IDENTIFICATION — DATE OF VISIT 7-23 1977



N 1/4 COR. SEC. 23 8/19

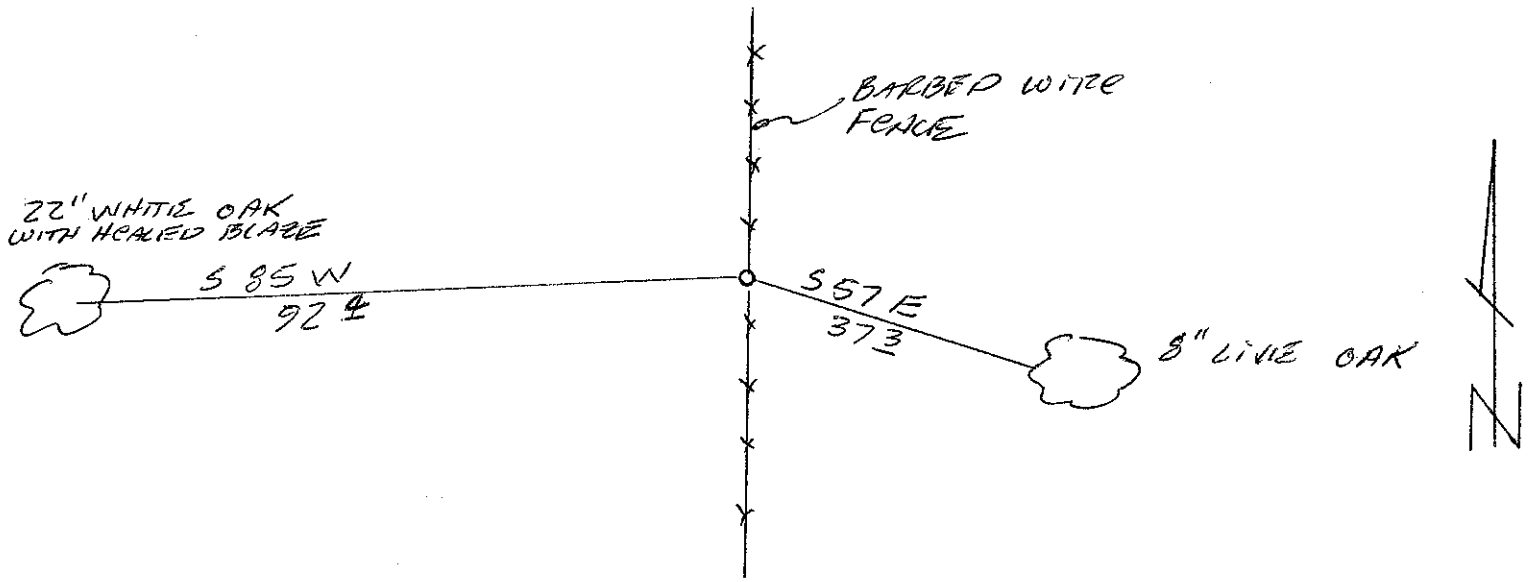
CORNER — LEFT AS FOUND FOUND AND TAGGED REESTABLISHED OBLITERATED CORNER REBUILT

PHYSICAL DESCRIPTION OF CORNER FOUND; EVIDENCE AND METHOD USED TO IDENTIFY OR REESTABLISH
FOUND ROCK MOUND 9' 1 BEARING TREE.
SET 3/4" IRON PIPE TAGGED LS 4546 IN ROCK MOUND.

PHYSICAL DESCRIPTION OF MONUMENTS REBUILT OR PERPETUATED

CALIFORNIA COORDINATE SYSTEM ORDER FIRST SECOND THIRD
 STATIONS USED: NGS (USC & GS) STATE COUNTY OTHER STATION _____ STATION _____
 ZONE _____ ELEVATION _____ NORTHINGS (Y) _____ EASTINGS (X) _____

SKETCH: (Include reference tie or witness points, remarks and topo of area)



THIS CORNER RECORD WAS RECEIVED BY ME OR UNDER MY DIRECTION IN CONFORMANCE WITH THE LAND SURVEYORS ACT ON _____
 SIGNED: Robert K. Goodner
 L.S. or P.S. _____
 STATE OF CALIFORNIA

COUNTY SURVEYOR'S CERTIFICATE
 THE CORNER RECORD WAS RECEIVED _____ 19____
 AND EXAMINED AND FOUND TRUE _____ 19____
 BY: Herman A. Stinson
 TITLE: _____
 DOCUMENT No. _____
 STATEMENT ON BACK OF SHEET YES NO