

CORNER RECORD

County of MADERA T. 85 R. 19 E MADERA Meridian California

Corner Type: Govt. Corner  Meander  Rancho  Other

Corner Identification N 1/4 Sec 21 Date of Visit APRIL 19 78  
8/19



Corner  Left as Found  Found and Tagged  Reestablished  Obliterated  Corner Rebuilt

Physical Description of Corner Found; Evidence and Method used to Identify or reestablish  
1/4" IRON PIPE TAGGED RICE 21650 SET BY REAPPORTIONMENT BY ME ON  
PREVIOUS SURVEY - 1974

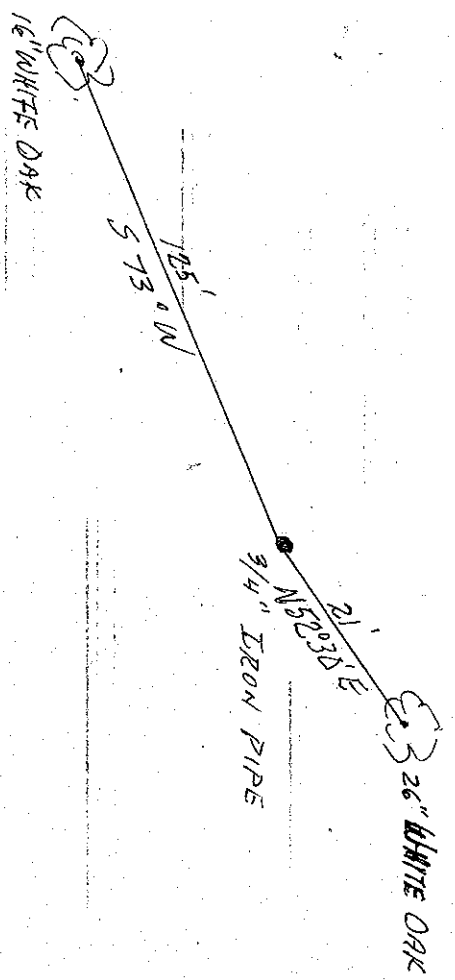
Physical Description of Monuments Rebuilt or Perpetuated

California Coordinate System Order: First  Second  Third

Stations used: NOS (USC & GS)  State  County  Other  Station \_\_\_\_\_ Station \_\_\_\_\_

Elevation \_\_\_\_\_ Northings (Y) \_\_\_\_\_ Eastings (X) \_\_\_\_\_

SKETCH: (Include reference tie or witness points, remarks and topo of area)



SURVEYOR'S CERTIFICATE

This corner record was prepared by me or under my direction in conformance with the Land Surveyors Act on APRIL 1978.

Signed: Joseph C. Smith RAS 21650  
L.S. or F.C.E. No.:

COUNTY SURVEYOR'S CERTIFICATE

The Corner Record was received 6-15 1978 and examined and filed JUNE 16 1978.

By: A. Brute  
Title County Engineer  
Document No. 78-03-01