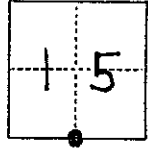


CORNER RECORD

COUNTY OF MADERA T. 8 R. 19 MOBIM MERIDIAN CALIFORNIA

CORNER TYPE: GOVT. CORNER MEANDER RANCHO CONTROL OTHER
 CORNER IDENTIFICATION — DATE OF VISIT AUG 1985



CORNER — LEFT AS FOUND FOUND AND TAGGED REESTABLISHED OBLITERATED CORNER REBUILT

PHYSICAL DESCRIPTION OF CORNER FOUND; EVIDENCE AND METHOD USED TO IDENTIFY OR REESTABLISH

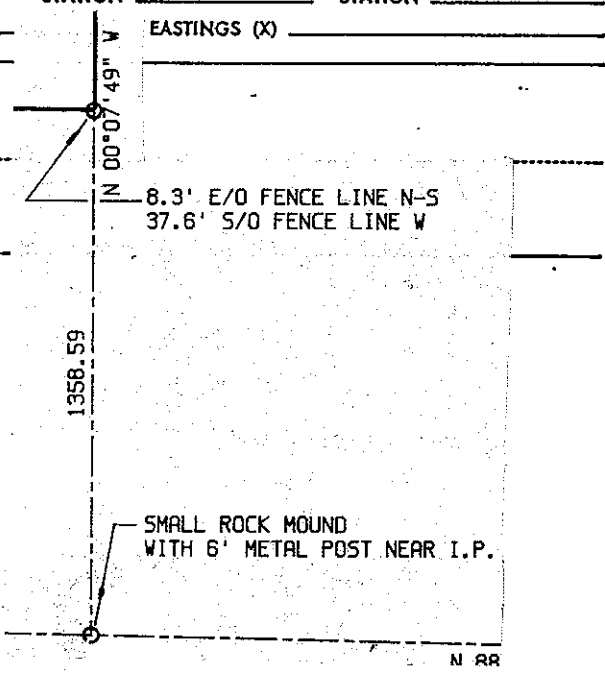
PHYSICAL DESCRIPTION OF MONUMENTS REBUILT OR PERPETUATED

CALIFORNIA COORDINATE SYSTEM ORDER: FIRST SECOND THIRD
 STATIONS USED: NGS (USC & GS) STATE COUNTY OTHER STATION _____ STATION _____
 ZONE _____ ELEVATION _____ NORTHINGS (Y) _____ EASTINGS (X) _____

(Fold)

SKETCH: (Include reference tie or witness points, remarks and topo of area)

*Copied from RS for Reio Vol 32 Pg 61
 Set 1" I.P., Up 6", Tagged RCE 19789*



SURVEYOR'S CERTIFICATE

THIS CORNER RECORD WAS PREPARED BY ME OR UNDER MY
 SUPERVISION IN CONFORMANCE WITH THE LAND SURVEYORS ACT
 OF CALIFORNIA ON _____ 19____

SIGNED: _____
 L.S. or R.C.E. No.: _____

SEAL

COUNTY SURVEYOR'S CERTIFICATE

THE CORNER RECORD WAS RECEIVED _____ 19____
 AND EXAMINED AND FILED _____ 19____
 BY: _____
 TITLE: _____

DOCUMENT No. _____

STATEMENT ON BACK OF SHEET

YES NO