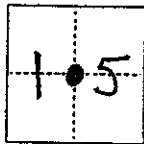


# CORNER RECORD

COUNTY OF MADERA T. 8 R. 19 MDB&M MERIDIAN CALIFORNIA

CORNER TYPE: GOV'T. CORNER  MEANDER  RANCHO  CONTROL  OTHER

CORNER IDENTIFICATION — DATE OF VISIT AVG 19 85



CORNER — LEFT AS FOUND  FOUND AND TAGGED  REESTABLISHED OBLITERATED CORNER  REBUILT

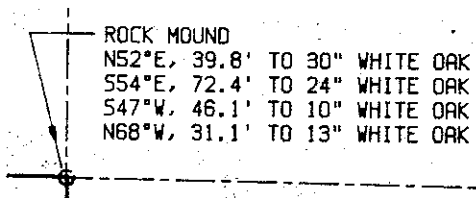
PHYSICAL DESCRIPTION OF CORNER FOUND; EVIDENCE AND METHOD USED TO IDENTIFY OR REESTABLISH

PHYSICAL DESCRIPTION OF MONUMENTS REBUILT OR PERPETUATED

CALIFORNIA COORDINATE SYSTEM ORDER: FIRST  SECOND  THIRD   
 STATIONS USED: NGS (USC & GS)  STATE  COUNTY  OTHER  STATION \_\_\_\_\_ STATION \_\_\_\_\_  
 ZONE \_\_\_\_\_ ELEVATION \_\_\_\_\_ NORTHINGS (Y) \_\_\_\_\_ EASTINGS (X) \_\_\_\_\_

(Fold)

SKETCH: (Include reference tie or witness points, remarks and topo of area)



COPIED FROM RS FOR REIO Vol 32 Pg 61  
 1" IP, Up 6", RCE 19789

### SURVEYOR'S CERTIFICATE

THIS CORNER RECORD WAS PREPARED BY ME OR UNDER MY  
 SUPERVISION IN CONFORMANCE WITH THE LAND SURVEYORS ACT  
 OF CALIFORNIA, 1907, AS AMENDED.

SIGNED: \_\_\_\_\_  
 L.S. or R.C.E. No.: \_\_\_\_\_

SEAL

### COUNTY SURVEYOR'S CERTIFICATE

THE CORNER RECORD WAS RECEIVED \_\_\_\_\_ 19\_\_\_\_  
 AND EXAMINED AND FILED \_\_\_\_\_ 19\_\_\_\_  
 BY: \_\_\_\_\_  
 TITLE: \_\_\_\_\_

DOCUMENT No. \_\_\_\_\_

STATEMENT ON BACK OF SHEET

YES  NO