

Index File No.

CORNER RECORD (SEARCH)  
(Ref. FSM 7151.4)

Tract or Survey No.

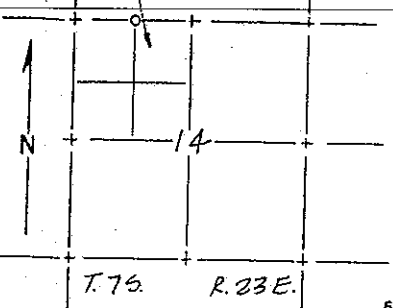
Cor. No. W 1/16

T 7S R. 23E

R.D. \_\_\_\_\_ County Madera

Merid. \_\_\_\_\_ N.F. \_\_\_\_\_ State CA

CORNER DIAGRAM



DESCRIBE CORNER MONUMENT FOUND

None found

DESCRIBE BEARING TREES OR OTHER OFFICIAL ACCESSORIES FOUND

None found

PHOTO IDENTIFICATION DATA

Photo No. \_\_\_\_\_  
 Filed At. \_\_\_\_\_  
 Object Ident. \_\_\_\_\_  
 Ident. By \_\_\_\_\_  
 Signature \_\_\_\_\_

PLANE COORDINATE POSITION DATA

State \_\_\_\_\_ Zone \_\_\_\_\_  
 X \_\_\_\_\_  
 Y \_\_\_\_\_  
 Estab. By \_\_\_\_\_  
 Agency \_\_\_\_\_

DESCRIBE CORNER LOCATION RELATIVE TO NEAR-BY FEATURES, ALSO HOW TO REACH CORNER

From the northwest corner to Sec. 14 go east 1/4 mile along posted line across rock face. The corner falls approximately 2 chains west of a creek on open rock slab.

Signature [Signature] Title \_\_\_\_\_ Division CG. 4298 Headquarters \_\_\_\_\_ Date 10/1/87 FS-7100-52 (3/68)

CORNER RECORD (PERPETUATION)

MONUMENT: DESCRIBE NEW MONUMENT SET, OR WORK DONE TO PRESERVE EXISTING MONUMENT

Set a 1" I.P. in drilled rock with a U.S.F.S. cap marked W. 1/16 to Sec. 1 and Sec. 14, T. 7S., R. 23 E., raised a rock mound around monument.

ACCESSORIES: DESCRIBE NEW BT'S WITNESS OBJECTS ETC. ESTABLISHED, OR WORK DONE TO PRESERVE EXISTING EVIDENCE

I blazed a 14" S. pine N. 53° E. 63.78' and a 32" Y. pine N. 86° W. 106.35' I set a U.S.F.S. post N. 45° E. 2.0' drilled in rock.

Work Done By. Jones Title surveyor Date 8-13-87 State Registration No. LS 4298 or Agency \_\_\_\_\_

Certified Cor. Record Prepared? Yes  No  Filed At: \_\_\_\_\_ Date \_\_\_\_\_

REMARKS

Index File No. T. R. M. Tract or Surv. No. Cor.