

CORNER RECORD

Document Number _____

City of _____ County of Madera, California

Brief Legal Description SW corner of Lot 10 of Marina View Heights, Unit No. 4
Situated in the S 1/2 of the NW 1/4 of Section 25, T. 7 S., R. 22 E., M.D.B. # M.

T. 7 S.	R. 22 E.
S.	25

CORNER TYPE

Government Corner Control
 Meander Property
 Rancho Other

Date of Survey 06/09/03

COORDINATES(Optional)

N. _____
 E. _____
 Zone _____ NAD27 NAD83
 NAD83 Epoch _____
 Elevation _____
 Vert. Datum: NGVD29 NAV88
 Meas. Units: Metric Imperial

Corner - Left as found Found and tagged Established Reestablished Rebuilt

Identification and type of corner found: Evidence used to identify or procedure used to establish or reestablish the corner:

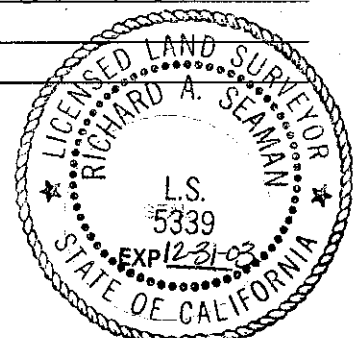
Foundal" iron pipe out of position in relationship to other found monuments
per the Record Map: Volume 11 of Maps at Page 21, Madera County
Records. Reset the SW corner of Lot 10 at the proportioned
position. See sketch on back.

A description of the physical condition of the monument as found and as set or reset: A 1" iron pipe was
found N 20°00'49"E 5.73' from the calculated position.
A 5/8" steel bar with plastic cap stamped LS 5339 was
set at the calculated position.

SURVEYOR'S STATEMENT

This Corner Record was prepared by me or under my direction in conformance with
 the Land Surveyor's Act on June 12, 2003.

Signed [Signature] P.L.S. or R.C.E. Number LS 5339



COUNTY SURVEYOR'S STATEMENT

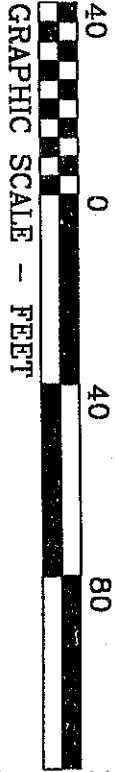
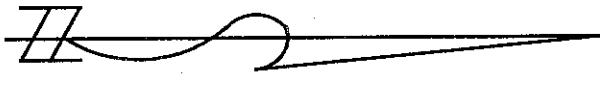
This Corner Record was received JUNE 27, 2003 and examined
 and filed JULY 17, 2003

Signed David M. McGlasson P.L.S. or R.C.E. Number 6968

Title _____

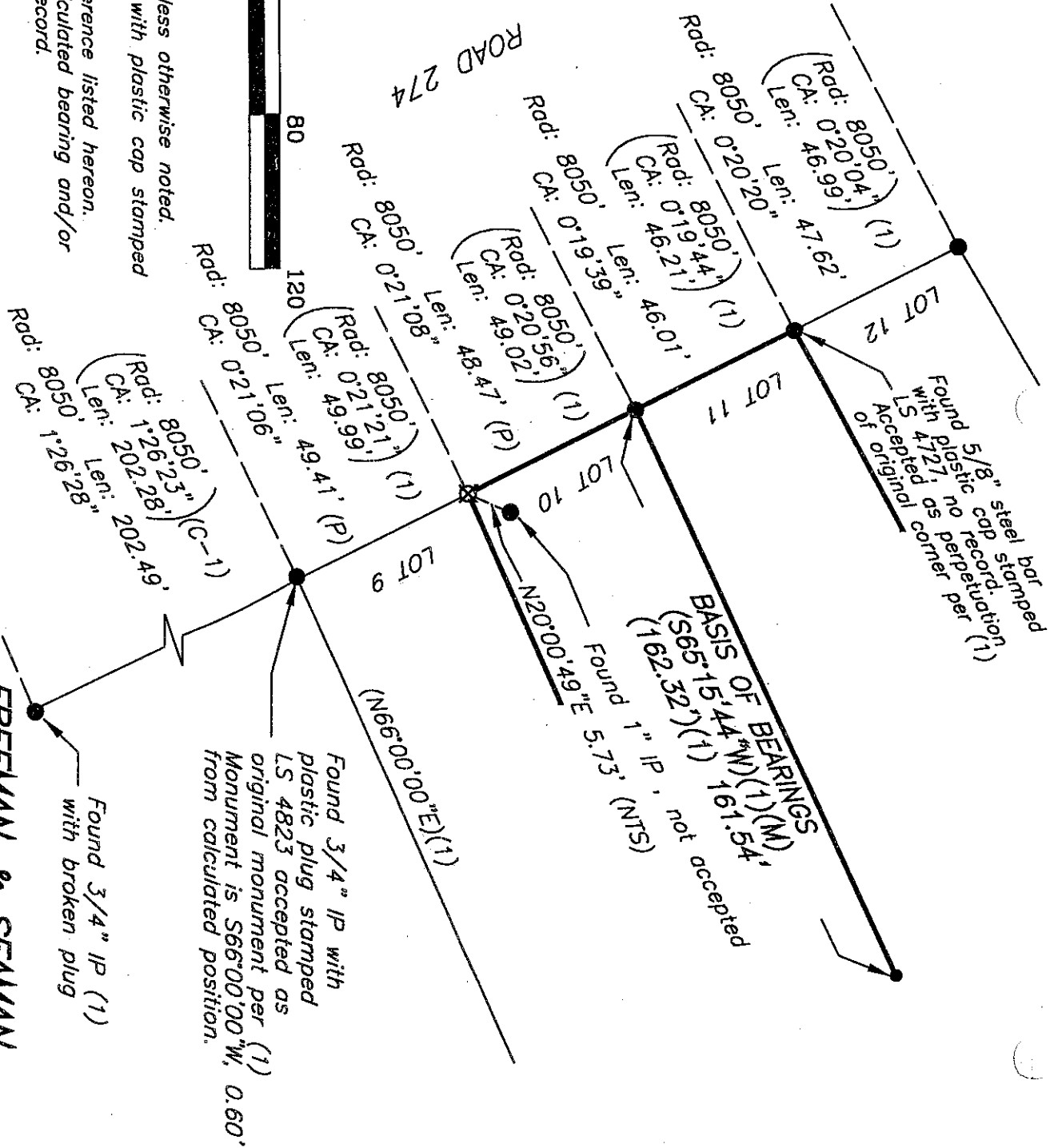
County Surveyor's Comment _____





LEGEND

- Found 3/4" IP (1), unless otherwise noted.
- ⊗ Set 5/8" steel bar with plastic cap stamped LS 5339
- (1) Record data per reference listed hereon.
- (M) Measured and/or calculated bearing and/or distance same as record.
- IP Iron pipe
- (NTS) Not to scale
- (C-1) Calculated per reference hereon.



FREEMAN & SEAMAN
LAND SURVEYORS
 030525.CRD/030525CR.DWG