

# CORNER RECORD

Document Number \_\_\_\_\_  
City of Bass Lake County of Madera, California  
Brief Legal Description Lot 33 of Marina View Heights No. 3 as recorded in Book 10 of Maps at Page 128, MCR

## CORNER TYPE

## COORDINATES (Optional)

Section 25  
T7S, R22E,  
MDM

Government Corner  Control   
Meander  Property   
Rancho  Other

Date of Survey 9/11/09

N. \_\_\_\_\_  
E. \_\_\_\_\_

Zone \_\_\_\_\_ NAD27  NAD83

NAD83 Epoch \_\_\_\_\_  
Elevation \_\_\_\_\_

Vert Datum: NGVD29  NADV88   
Meas. Units: Metric  Imperial

Corner - Left as found  Found and tagged  Established \_\_\_\_\_ Reestablished  Rebuilt

### Identification and type of corner found: Evidence used to identify or procedure used to establish or reestablish the corner:

Found and accepted 1" iron pipes tagged RCE9074, or monuments as noted

Established missing corner monument using those found monuments and bearings and distances as shown on plat of Marina View Heights No. 3 (See sketch, Page 2)

### A description of the physical condition of the monument as found and as set or reset:

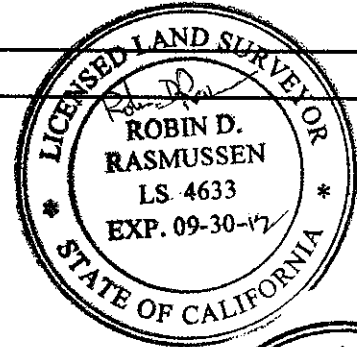
Set 5/8" x 30" rebar tagged LS4633 flush, or monument as noted

(See sketch, Page 2)

## SURVEYOR'S STATEMENT

This Corner Record was prepared by me or under my direction in conformance with the Land Surveyor's Act on November 25, 2011

Signed Robin D. Rasmussen PLS No: 4633



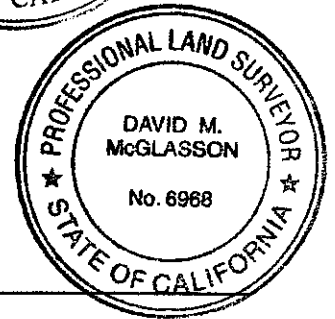
## COUNTY SURVEYOR'S STATEMENT

This Corner Record was received 2/20 2012 and examined

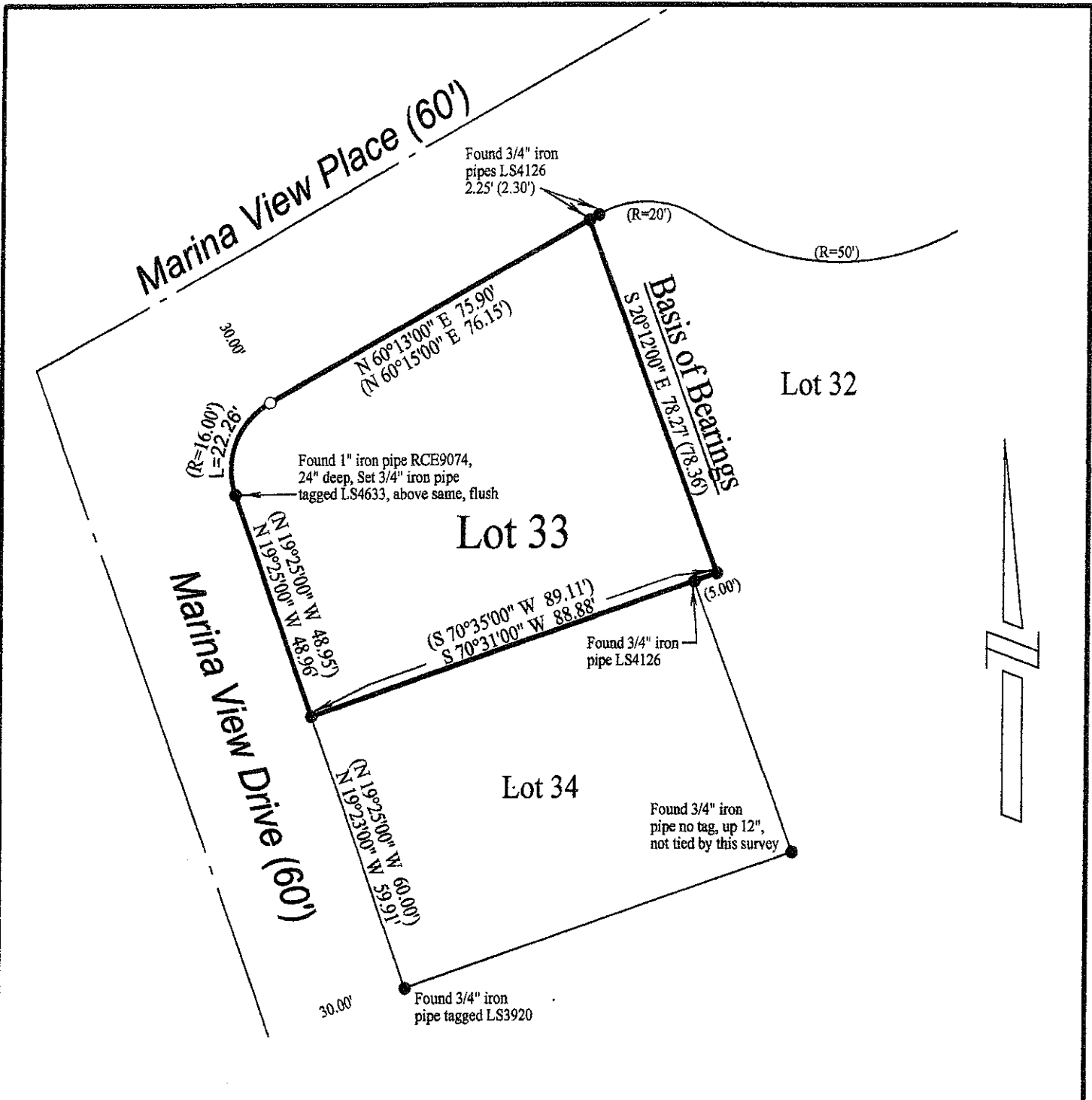
and filed 2/28 2012

Signed David M. McGlasson PLS No: 6968

Title Acting County Surveyor



County Surveyor's Comment \_\_\_\_\_



**Basis of Bearings**

Bearings are based on the east line of Lot 33 as shown on plat of Marina View Heights No. 3, Bk 10 of Maps at Pg 128, MCR, which bears S 20°12'00\"

**CORNER RECORD**

Of Lot 33 of Marina View Heights No. 3, Bk 10 of Maps, Pg 128, MCR, Madera County, California

Page 2 of 2    Scale: 1"=30'    November 25, 2011

**Legend**

- Found and accepted 1" iron pipe tagged RCE9074, or as noted
- (...) Record data per map of Marina View Heights No. 3, Bk 10 of Maps, Pg 128, MCR
- Set 5/8" x 30" rebar with cap LS4633, flush