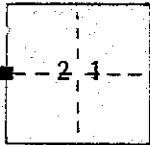
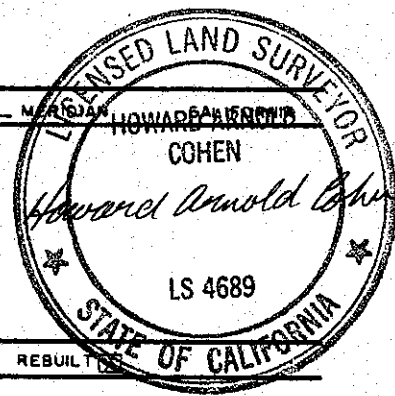


CORNER RECORD

COUNTY OF Madera T. 7 S. R. 22 E. M.D.B. &

CORNER TYPE: GOV'T. CORNER MEANDER RANCHO CONTROL OTHER

CORNER IDENTIFICATION - DATE OF VISIT June 30 1982



West $\frac{1}{4}$ corner Section 21 7/22.

CORNER - LEFT AS FOUND FOUND AND TAGGED REESTABLISHED OBLITERATED CORNER REBUILT

PHYSICAL DESCRIPTION OF CORNER FOUND, EVIDENCE AND METHOD USED TO IDENTIFY OR REESTABLISH

RECORD: An Iron post, 3' long, 1" dia., 24" in the ground with brass cap marked: S $20\frac{1}{4}$ S21 per GLO notes of A.W. Brown, U.S. Surveyor, 1917.

FOUND: 1-1/8" O.D., I.P., 36" long, up 16", bent to SW with 2 1/2" O.D. GLO brass cap & ACCEPTED marked: Found 1 original bearing trees.

S $20\frac{1}{4}$ S 21
1917

PHYSICAL DESCRIPTION OF MONUMENTS REBUILT OR PERPETUATED

Set: Standard FSM, up 4". Built rock mound 1 1/2' at the base and 1/2' high around the monument. Set a fiberglass post 4'+ NE of the monument with a Forest Service "Attention" sign attached. Buried GLO monument horizontally with FSM.

FSM - Aluminum monument, 2 1/2" O.D., 30" long with a 3/4" O.D. aluminum cap; stamped for the corner, with L.S. 4689, the date, and a Forest Service logo.

CALIFORNIA COORDINATE SYSTEM ORDER FIRST SECOND THIRD
 STATIONS USED: NGS (USC & GS) STATE COUNTY OTHER STATION _____ STATION _____
 ZONE _____ ELEVATION _____ NORTHINGS (Y) _____ EASTINGS (X) _____

ETCH: (Include reference tie or witness points, remarks and topo of area)

CORNER TIES:

CAP INSCRIPTION

Original Bearing Trees:

A ponderosa pine, 29.5" dia., bears N 64° 20' E, 70.93'.
(scribing visible)

T7S R22E
S20 $\frac{1}{4}$ S21
L.S. 4689
1982

Other Bearing Trees

A black oak, 14.0" dia., bears S 20° 01' W, 66.75'.
A black oak, 49.5" dia., (measured below fork), bears N 21° 55' W, 44.62'. (Previously blazed)

- . Bearings are to the center of trees at the base. Distances are horizontal to a nail and tag (stamped L. S. 4689) driven into the side-center of the root crown.
- . Posted Forest Service Monument and Bearing Tree signs.
- . Blazed and scribed new bearing tree and stamped monument in accordance with the BLM 1973 "Manual of Surveying Instructions."

P-9
1-64

SURVEYOR'S CERTIFICATE

THIS CORNER RECORD WAS PREPARED BY ME OR UNDER MY DIRECTION IN CONFORMANCE WITH THE LAND SURVEYOR'S ACT ON October 18 1982

SIGNED: Howard Arnold Cohen
L.S. or B.C.E. No. 4689

COUNTY SURVEYOR'S CERTIFICATE

THE CORNER RECORD WAS RECEIVED _____ 19____ AND EXAMINED AND FILED _____ 19____ BY: Howard Arnold Cohen TITLE: County Surveyor

DOCUMENT No. _____

STATEMENT ON BACK OF SHEET