

Document Number _____

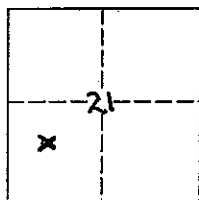
City of Unincorporated Area

County of Madera, California

Brief Legal Description SE-NW-SW 1/256 CORNER, Section 21, T. 7 S., R. 22 E., M.D.M.

CORNER TYPE

COORDINATES(Optional)



Government Corner Control
 Meander Property
 Rancho Other
 Aliquot part corner _____
 Date of Survey May, 2001

N. _____
 E. _____
 Zone _____ NAD27 NAD83
 NAD83 Epoch _____
 Elevation _____
 Vert. Datum: NGVD29 NAV88
 Meas. Units: Metric Imperial

Corner - Left as found Found and tagged Established Reestablished Rebuilt

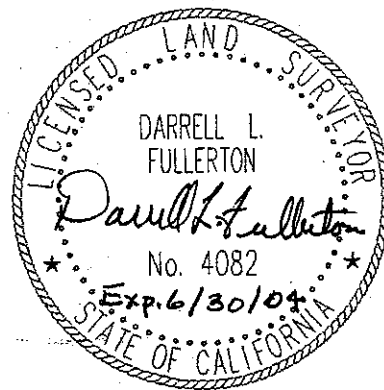
Identification and type of corner found: Evidence used to identify or procedure used to establish or reestablish the corner:
Found bent 2 1/2" aluminum pipe remains of a U.S. Forest Service monument . The stamped aluminum cap was missing. This corner monument appears to have been destroyed by road grading. The remains were located from bearing trees and a reference monument as shown on Record of Survey filed in Book 35 Of Maps, Page 73, Records of Madera County and Corner Record filed by Howard Cohen, LS 4689, dated October 18, 1982.

A description of the physical condition of the monument as found and as set or reset: _____
Set California Division of Forestry brass cap monument one foot below ground level, stamped LS 4082 with punch mark in the top of a 3/4 inch iron pipe.

SURVEYOR'S STATEMENT

This Corner Record was prepared by me or under my direction in conformance with the Land Surveyor's Act on January 15, 2002

Signed Darrell L. Fullerton P.L.S. or R.C.E. Number LS 4082



COUNTY SURVEYOR'S STATEMENT

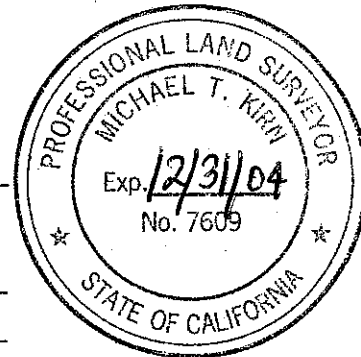
This Corner Record was received Jan 18, 2002 and examined and filed Jan 30, 2002

Signed M.T. Kinn P.L.S. or R.C.E. Number 7609

Title County Surveyor

County Surveyor's Comment _____

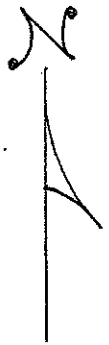
County Surveyor



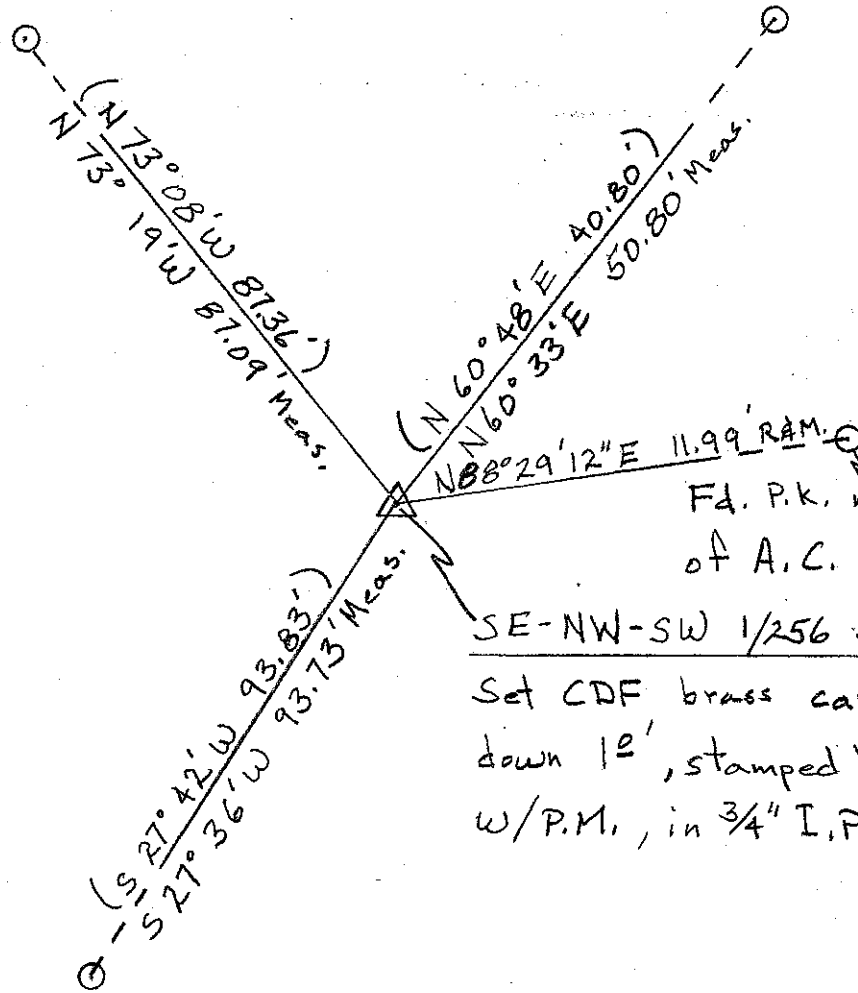
Diagram

Fd 20" Black Oak B.T.

Fd 12" Incense Cedar B.T.



No Scale



Fd. P.K. nail in center of A.C. Road.

SE-NW-SW 1/256 cor, Sec. 21
 Set CDF brass cap monument
 down 12', stamped "LS4082"
 w/P.M., in 3/4" I.P.

Fd. 10" Ponderosa Pine B.T.

Note: Each of the B.T.'s is blazed and is posted with USFS Monument & Bearing Tree signs.

(Rec) Refers to 35 M 73, M.C.R. 0822320320