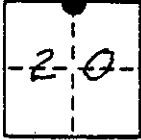


CORNER RECORD

COUNTY OF Madera T. 7 S R. 22 E M.D. MERIDIAN CALIFORNIA
 CORNER TYPE: GOVT. CORNER MEANDER RANCHO CONTROL OTHER
 CORNER IDENTIFICATION - DATE OF VISIT March 21 1980



N 1/4 cor Sec 20

CORNER - LEFT AS FOUND FOUND AND TAGGED REESTABLISHED OBLITERATED CORNER REBUILT

PHYSICAL DESCRIPTION OF CORNER FOUND; EVIDENCE AND METHOD USED TO IDENTIFY OR REESTABLISH

Fd. G.L.O. brass cap on 1" O.D. iron pipe up 14" in 1 1/2" dia. rock md (small). as per field notes by A.W. Brown, U.S. Surveyor, date March 1917

PHYSICAL DESCRIPTION OF MONUMENTS REBUILT OR PERPETUATED

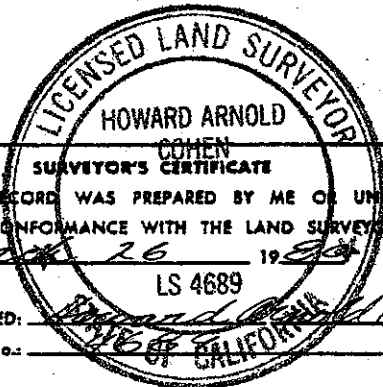
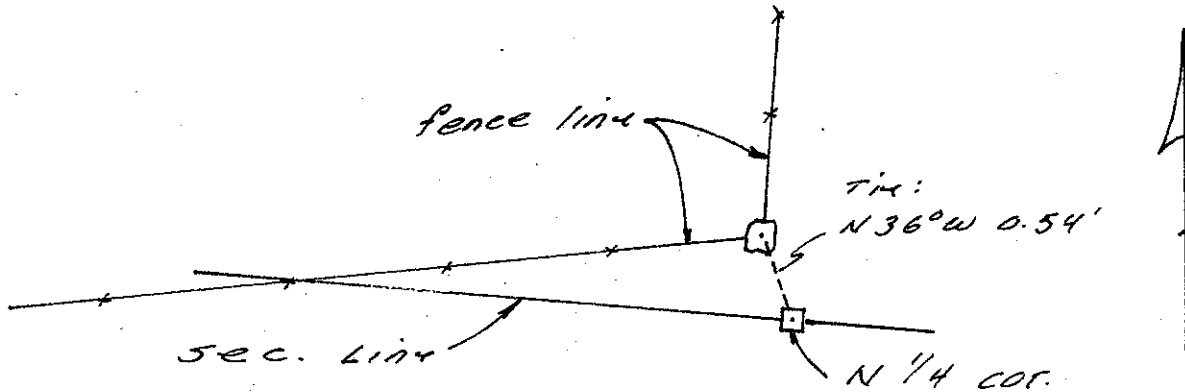
Left G.L.O. monument in place. Painted 1" O.D. ip. red. Set sign post approx 4' SW of cor. mon. with Forest Service 'corner attention sign' attached.

CALIFORNIA COORDINATE SYSTEM ORDER: FIRST SECOND THIRD
 STATIONS USED: NGS (USC & GS) STATE COUNTY OTHER STATION _____ STATION _____
 ZONE _____ ELEVATION _____ NORTHINGS (Y) _____ EASTINGS (X) _____

SKETCH: (Include reference tie or witness points, remarks and topo of area)

COR. TIES

*N 52° E 11.67' to SRH in base of Manzanita
 N 36° W 0.54' to SRH in cor. fc. post.*



THIS CORNER RECORD WAS PREPARED BY ME OR UNDER MY DIRECTION IN CONFORMANCE WITH THE LAND SURVEYORS ACT ON March 26 1980

SIGNED: Howard Arnold Cohen
 L.S. or R.C.E. No. _____

COUNTY SURVEYOR'S CERTIFICATE

THE CORNER RECORD WAS RECEIVED _____ 19____ AND EXAMINED AND FILED _____

BY: Kenneth A. Hansen
 TITLE: County Engineer Surveyor

DOCUMENT No. _____

STATEMENT ON BACK OF SHEET