

# CORNER RECORD

COUNTY OF Madera T. 7 S R. 22 E M.D. MERIDIAN CALIFORNIA

CORNER TYPE: GOVT. CORNER  MEANDER  RANCHO  CONTROL  OTHER

CORNER IDENTIFICATION — DATE OF VISIT March 21 19 80

20

*NW cor. E 1/2 E 1/2 NW 1/4 NW 1/4 Sec 20*

*Fractional*

CORNER — LEFT AS FOUND  FOUND AND TAGGED  REESTABLISHED — ~~OLITERATED~~ CORNER  REBUILT

PHYSICAL DESCRIPTION OF CORNER FOUND; EVIDENCE AND METHOD USED TO IDENTIFY OR REESTABLISH

PHYSICAL DESCRIPTION OF MONUMENTS REBUILT OR PERPETUATED *set 30" aluminum monument with placed base, 3 1/4" aluminum cap and Forest Service logo. stamped with date (1980) and L.S. 4689. Monument up 4". set sign post approximately 4' SW of mon. with 'Land Survey Monument' sign attached.*

CALIFORNIA COORDINATE SYSTEM ORDER: FIRST  SECOND  THIRD

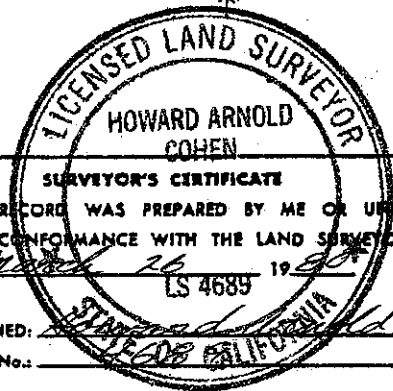
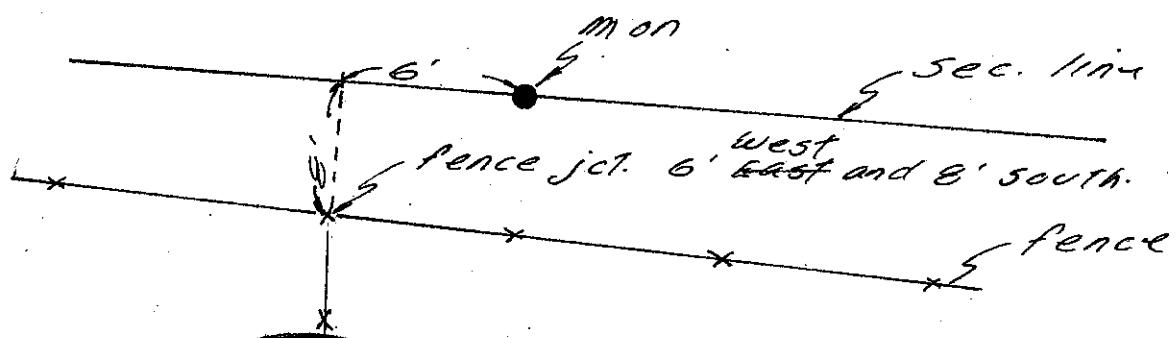
STATIONS USED: NGS (USC & GS)  STATE  COUNTY  OTHER  STATION \_\_\_\_\_ STATION \_\_\_\_\_

ZONE \_\_\_\_\_ ELEVATION \_\_\_\_\_ NORTHINGS (Y) \_\_\_\_\_ EASTINGS (X) \_\_\_\_\_

SKETCH: (Include reference tie or witness points, remarks and topo of area)

Cor. Ties

*N 34 1/2° E 10.98' to shiner & hard nail in 7' x 6' x 6' boulder*  
*S 67° E 12.61' to chisled 't' in 4' x 3' x 1 1/2' rock.*  
*S 56 1/2° W 40.52' to chisled 't' in 3' x 4' x 2' rock.*



**SURVEYOR'S CERTIFICATE**

THIS CORNER RECORD WAS PREPARED BY ME OR UNDER MY DIRECTION IN CONFORMANCE WITH THE LAND SURVEYORS ACT ON March 26 19 80

SIGNED: Howard Arnold Cohen

L.S. or R.C.E. No. \_\_\_\_\_

**COUNTY SURVEYOR'S CERTIFICATE**

THE CORNER RECORD WAS RECEIVED \_\_\_\_\_ 19 \_\_\_\_\_ AND EXAMINED AND FILED \_\_\_\_\_ 19 \_\_\_\_\_

BY: Thomas Outlawson

TITLE: County Engineer-Surveyor

DOCUMENT No. \_\_\_\_\_

STATEMENT ON BACK OF SHEET