

CORNER RECORD

COUNTY OF MADERA T. 7S R. 22E M.D.B. & MERIDIAN CALIF.

CORNER TYPE: GOV'T. CORNER () MEANDER ( ) RANCHO ( ) CONTROL ( ) OTHER ( )

CORNER IDENTIFICATION --- DATE OF VISIT 1 APRIL 1976



S.W. CORNER SEC. 19 T 7S R 22E M.D.B. & M.

CORNER -- LEFT AS FOUND () FOUND & TAGGED ( ) REESTABLISHED OBLITERATED CORNER ( ) REBUILT ( )

PHYSICAL DESCRIPTION OF CORNER FOUND: EVIDENCE & METHOD USED TO IDENTIFY OR REESTABLISH:

2 1/2" BRASS CAP, U.S. GOV'T SURVEY, 1917 FOR SECTION CORNERS 24, 19, 30, 25 OF T 7S R 22E & 21E.

PHYSICAL DESCRIPTION OF MONUMENTS REBUILT OR PERPETUATED:

LEFT AS FND.

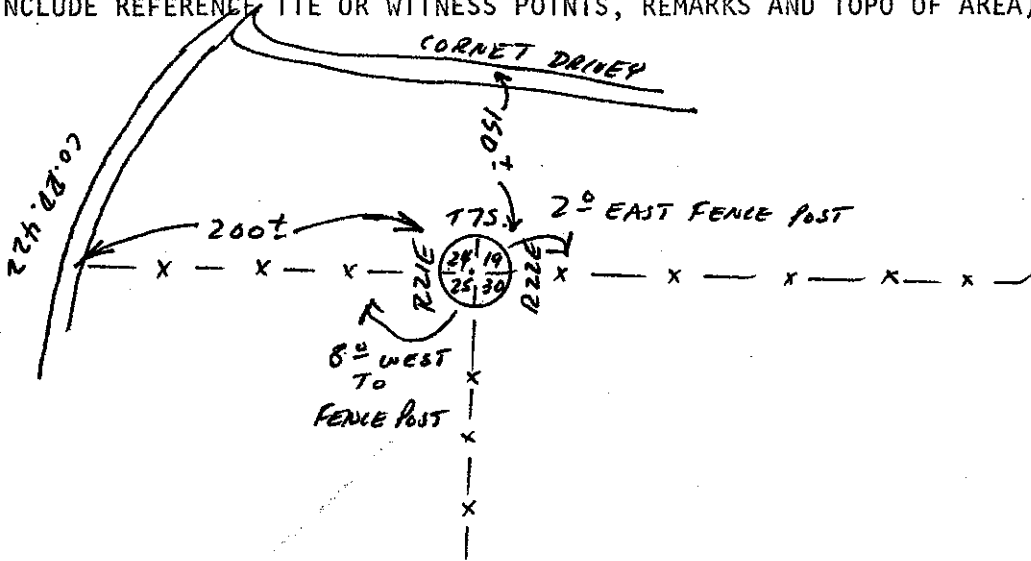
CALIFORNIA COORDINATE SYSTEM ORDER: FIRST ( ) SECOND ( ) THIRD ( )

STATIONS USED: NOS (USC & GS) ( ) STATE ( ) COUNTY ( ) OTHER ( ) STATION \_\_\_\_\_

STATION \_\_\_\_\_ ZONE \_\_\_\_\_ ELEVATION \_\_\_\_\_ NORTHINGS (Y) \_\_\_\_\_

EASTINGS (X) \_\_\_\_\_

SKETCH: (INCLUDE REFERENCE TIE OR WITNESS POINTS, REMARKS AND TOPO OF AREA)



SURVEYOR'S CERTIFICATE

THIS CORNER RECORD WAS PREPARED BY ME UNDER MY SUPERVISION IN CONFORMANCE WITH THE LAND SURVEYORS ACT ON

L. M. JENSEN 1976

SIGNED

L.S. or R.C.E. NO. 4261

NO. 4261

SEAL

COUNTY SURVEYOR'S CERTIFICATE

THE CORNER RECORD WAS RECEIVED 6-29-76 AND

EXAMINED & FILED 1976

BY: A. O. Grote

TITLE: County Engineer

DOCUMENT NO. 76-14-1

STATEMENT ON BACK OF SHEET

YES ( ) NO ()

