

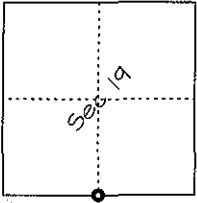
CORNER RECORD

Document Number _____

City of _____

County of Madera, California

Block Legal Description Near the town of Oakhurst, south of County Road 423



CORNER TYPE

19 7/22

COORDINATES (OPTIONAL)

Government Corner Control
Meander Property
Rancho Other
Date of Survey January 8, 1998

N.
E.
Zone Datum
Elevation

CORNER -- Left as found Found and tagged Established Reestablished Rebuilt

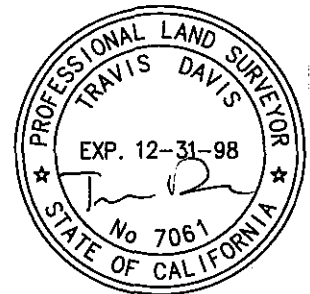
Identification and type of corner found; Evidence used to identify or procedure used to establish or reestablish the corner:
Found the South quarter corner of Section 19, Township 7 South, Range 22 East, Mount Diablo Base and Meridian.
Monument found as described on Parcel Map 2697, filed in Book 35, Page 94, Madera County Records.

A description of the physical condition of the monument as found and as set or reset:
Found 2" iron pipe with a 3" GLO brass cap, below surface 18".

SURVEYOR'S STATEMENT

This Corner Record was prepared by me or under my direction in conformance with the Land Surveyors' Act on January 14, 1998.

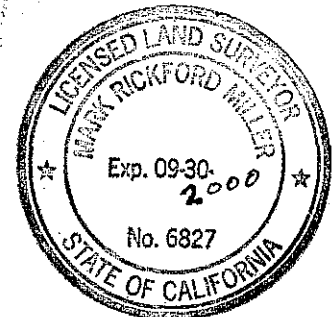
Signed Travis Davis PLS 7061



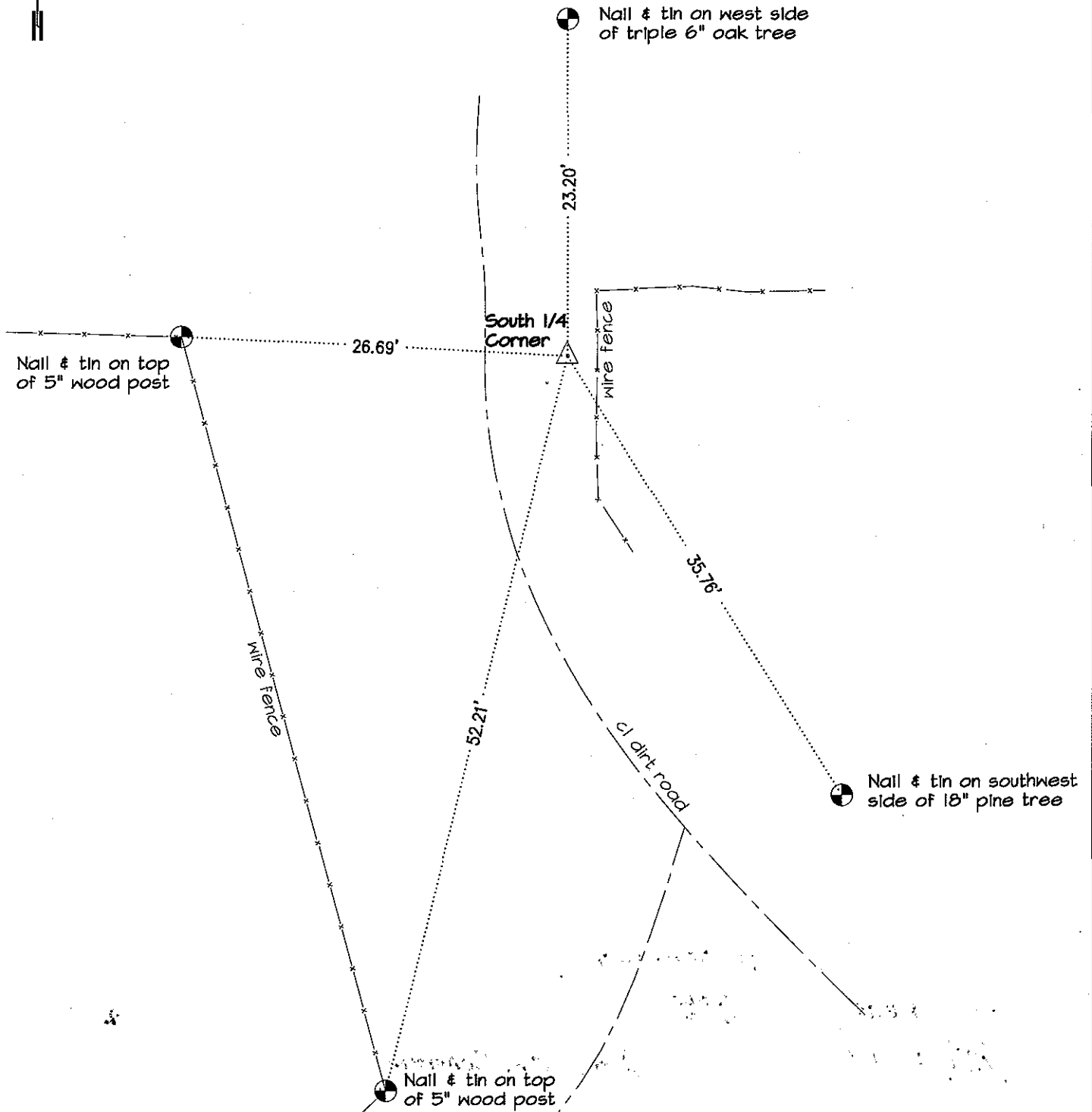
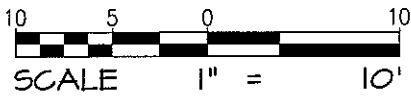
COUNTY SURVEYOR'S STATEMENT

This Corner Record was received 15 JANUARY, 1998 and examined and filed 2 FEB 2000 ~~1998~~.

Signed Mark Rickford Miller Title Act. Co. Surveyor



County Surveyor's Comment: RECORD WAS FOUND IN A STACK OF PAPERWORK & FILED LATE.



0822140300