

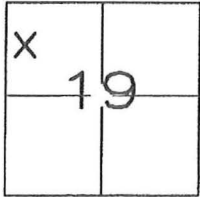
CORNER RECORD

Document Number _____

City of UNINCORPORATED

County of MADERA, California

Brief Legal Description LOT 10 OF CORRECTED MAP OF SIERRA LAKES TRACT, RECORDED IN BOOK 6 OF MAPS AT PAGES 143-144, M.C.R.



T.7S., R.22E.

CORNER TYPE

Government Corner Control
 Meander Property
 Rancho Other

Date of Survey JULY 21, 2015

COORDINATES(Optional)

N. _____
 E. _____
 Zone _____ NAD27 NAD83
 NAD83 Epoch _____
 Elev. _____
 Vert. Datum: NGVD29 NADV88
 Meas. Units: Metric Imperial

Corner - Left as found Found and tagged Established Reestablished Rebuilt

Identification and type of corner found: Evidence used to identify or procedure used to establish or reestablish the corner:

REESTABLISHED THE NORTHWEST CORNER OF LOT 10 USING PRORATION METHOD BETWEEN EXISTING FOUND MONUMENTS OF RECORD.

A description of the physical condition of the monument as found and as set or reset:

SET PK NAIL IN ASPHALT WITH ALUMINUM WASHER MARKED "LS 8779"

SURVEYOR'S STATEMENT

This Corner Record was prepared by me or under my direction in conformance with
 the Land Surveyor's Act on JULY 21, 2015.

Signed [Signature] P.L.S. or R.C.E. No.: PLS 8779



COUNTY SURVEYOR'S STATEMENT

This Corner Record was received July 7, 2015 and examined
 and filed August 4, 2015.

Signed [Signature] P.L.S. or R.C.E. No.: PLS 6968

Title Acting County Surveyor

County Surveyor's Comment _____

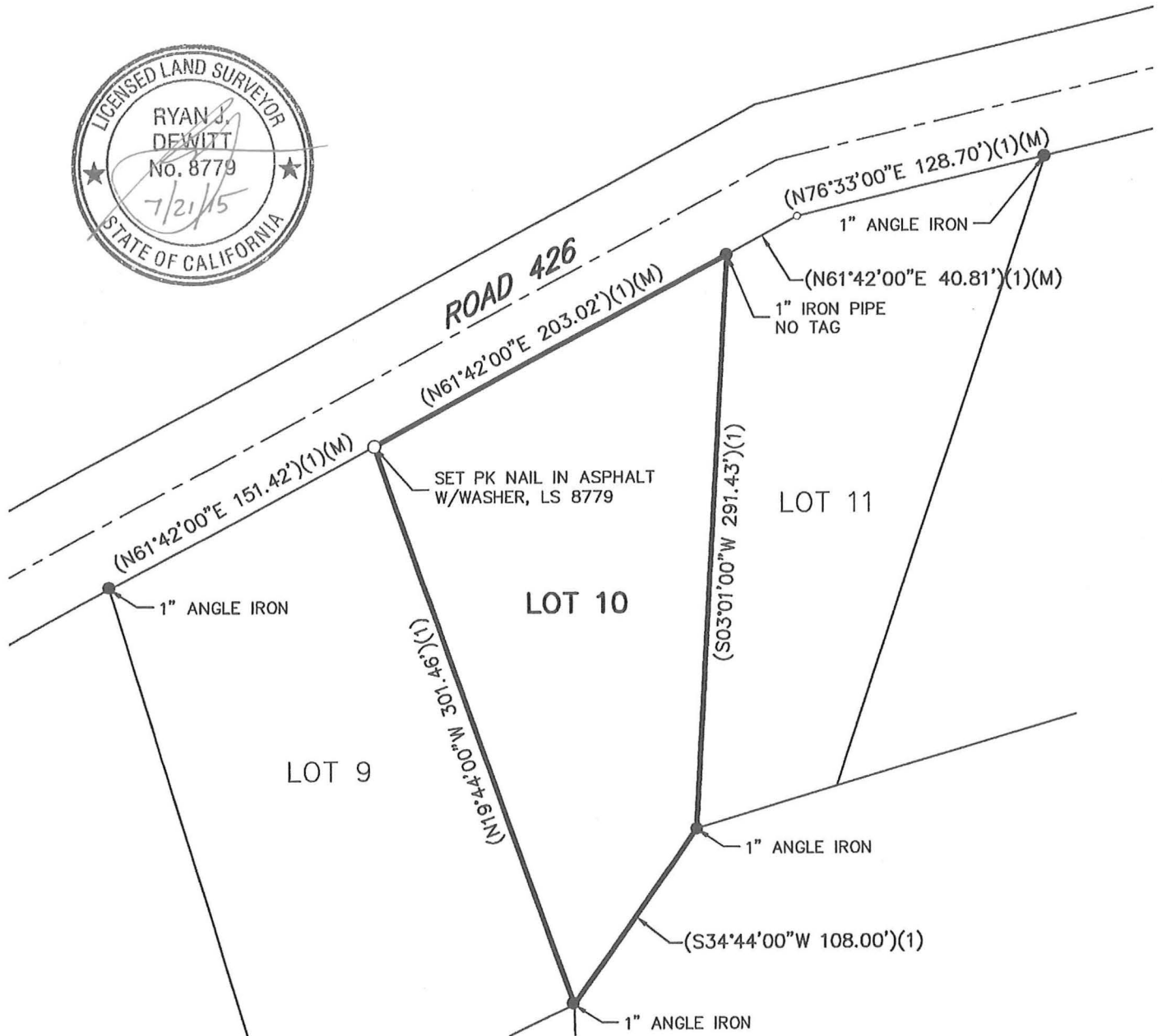




SCALE 1"=80'

CORNER RECORD

LOT 10 OF CORRECTED MAP OF SIERRA LAKES TRACT, RECORDED IN BOOK 6 OF MAPS AT PAGES 143-144, M.C.R. LOCATED IN SECTION 19, T7S, R22E, MDB&M



LEGEND

- SURVEY MONUMENT (AS NOTED)
- SET 5/8" REBAR, TAGGED LS 8779
- DIMENSION POINT (NOTHING FOUND OR SET)
- PROPERTY LINE
- ADJOINING PROPERTY LINE
- - - - - RIGHT-OF-WAY CENTERLINE
- (...)(1) BOOK 6 OF MAPS, PAGES 143-144, M.C.R.
- (M) MEASURED

JONES SNYDER & ASSOCIATES
P.O. BOX 2292, OAKHURST, CA 93644
(559)683-7661 WWW.JSSURVEYING.COM

DATE: 07/21/15 DWG FILE: 15-226CR.dwg
JOB NO: 15-226 DRAWN BY: RJD