

CORNER RECORD

County of MADERA T. 7 S., R. 22 E., M.D.B.&M. Meridian California

Corner Type: Govt. Corner Meander Rancho Other

Corner Identification _____ Date of Visit JUNE 10, 1975



CENTER SECTION 19

Corner _____ Left as Found Found and Tagged Reestablished Obliterated Corner Rebuilt

Physical Description of Corner Found; Evidence and Method used to Identify or reestablish

FND. 2" I.P. BRASS CAP. L.S. 2737 IN ROCK MND.

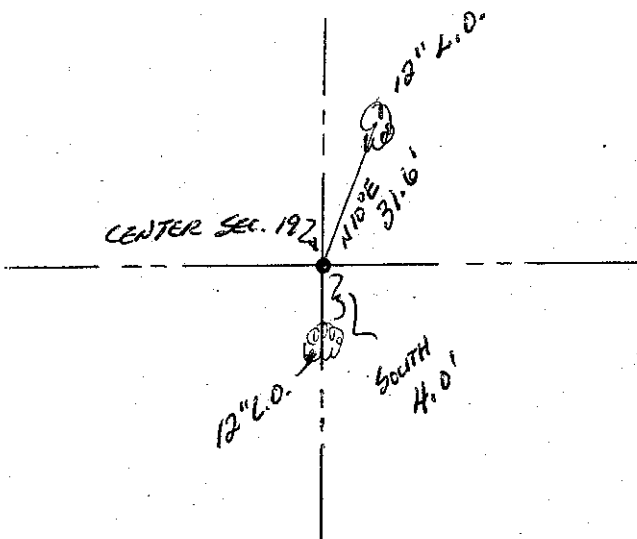
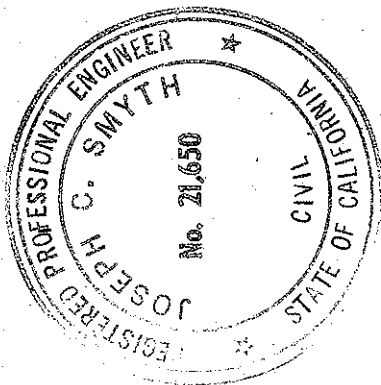
Physical Description of Monuments Rebuilt or Perpetuated

California Coordinate System Order: First Second Third

Stations used: NOS (USC & GS) State County Other Station _____ Station _____

Zone _____ Elevation _____ Northings (Y) _____ Eastings (X) _____

ATCH: (Include reference tie or witness points, remarks and topo of area)



SURVEYOR'S CERTIFICATE

This corner record was prepared by me or under my direction in conformance with the Land Surveyors Act on JULY 9 1975.

Signed: Joseph C. Smyth RCE 21650

L.S. or R.C.E. No.:

COUNTY SURVEYOR'S CERTIFICATE

The Corner Record was received 7-14 1975 and examined and filed July 14 1975.

By: Joe Pillay
Title Civil Engr. Asst.

Document No. 75-24-01