

CORNER RECORD

COUNTY OF Madera T. 15 R. 22E MD MERIDIAN CALIF.

CORNER TYPE: GOV'T CORNER  MEANDER  RANCHO  CONTROL  OTHER

CORNER IDENTIFICATION --- DATE OF VISIT Sept 1 1974



5/4 Cor, Sec. 18, T. 15., R. 22E., MDB & M

CORNER -- LEFT AS FOUND  FOUND & TAGGED  REESTABLISHED OBLITERATED CORNER   
REBUILT

PHYSICAL DESCRIPTION OF CORNER FOUND; EVIDENCE & METHOD USED TO IDENTIFY OR REESTABLISH:

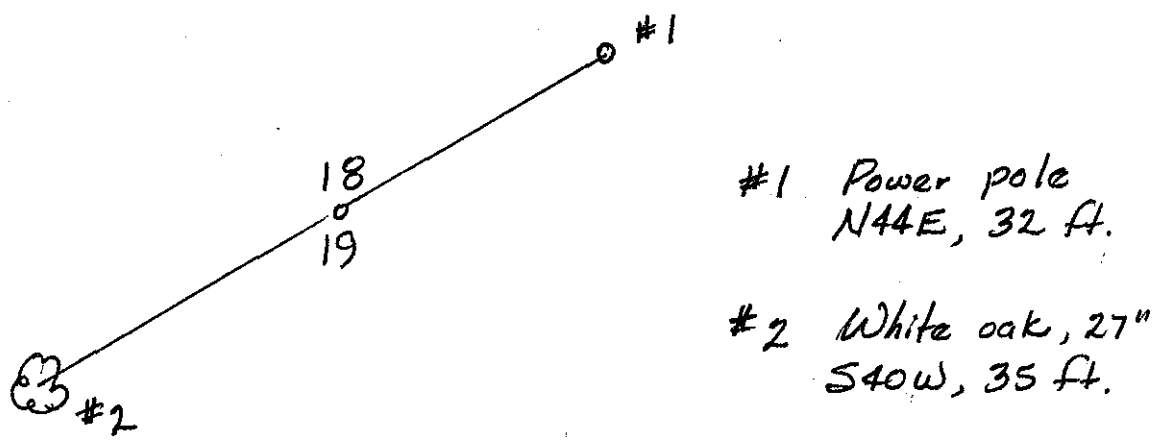
GLO Brass Cap dated 1917 on 1" iron pipe

PHYSICAL DESCRIPTION OF MONUMENTS REBUILT OR PERPETUATED:

N.A.

CALIFORNIA COORDINATE SYSTEM ORDER: FIRST  SECOND  THIRD   
STATIONS USED: NOS (USC & GS)  STATE  COUNTY  OTHER  STATION \_\_\_\_\_  
STATION \_\_\_\_\_ ZONE \_\_\_\_\_ ELEVATION \_\_\_\_\_ NORTHINGS (Y) \_\_\_\_\_  
EASTINGS (X) \_\_\_\_\_

SKETCH: (INCLUDE REFERENCE TIE OR WITNESS POINTS, REMARKS AND TOPO OF AREA)

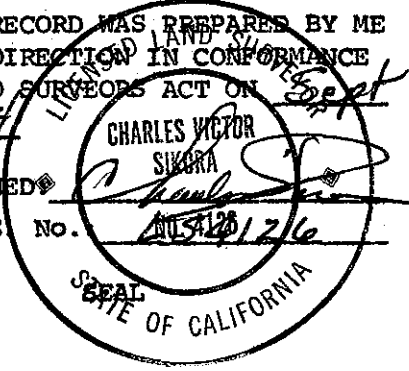


SURVEYOR'S CERTIFICATE

THIS CORNER RECORD WAS PREPARED BY ME OR UNDER MY DIRECTION IN CONFORMANCE WITH THE LAND SURVEYORS ACT ON Sept 6 1974

SIGNED [Signature]

L.S. or R.C.E. No. MS 126



COUNTY SURVEYOR'S CERTIFICATE

THE CORNER RECORD WAS RECEIVED sept. 6 1974

BY: Albert O. Grote

TITLE: County Engineer

DOCUMENT No. 74-17-2

STATEMENT ON BACK OF SHEET  
YES  NO