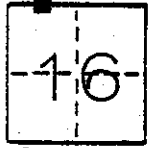


CORNER RECORD

COUNTY OF MADERA T. 7S R. 22E M.D. _____ MERIDIAN _____ CALIFORNIA _____

CORNER TYPE: GOVT. CORNER MEANDER RANCHO CONTROL OTHER

CORNER IDENTIFICATION — DATE OF VISIT April 9, 19 81



Witness corner to the West 1/16 Section 16 7/22
(NW corner of E 1/2 NW Section 16 7/22)

CORNER — LEFT AS FOUND FOUND AND TAGGED REESTABLISHED OBLITERATED CORNER RESULT

PHYSICAL DESCRIPTION OF CORNER FOUND; EVIDENCE AND METHOD USED TO IDENTIFY OR REESTABLISH

Corner established by section subdivision survey corner position fall in Bass Lake.

PHYSICAL DESCRIPTION OF MONUMENTS RESULT OR PERPETUATED

Set a 30" aluminum monument with a 3 1/4" aluminum cap and Forest Service logo, stamped with the date (1981), WC, and LS 4689. Set a fiberglass post about 4' from the monument with a Forest Service "Monument" sign attached.

CALIFORNIA COORDINATE SYSTEM ORDER: FIRST SECOND THIRD

STATIONS USED: NGS (USC & GS) STATE COUNTY OTHER STATION _____ STATION _____

ZONE _____ ELEVATION _____ NORTHINGS (N) _____ EASTINGS (X) _____

SKETCH: (Include reference tie or witness points, remarks and topo of area)

CORNER TIES

- S 10° 08' E, 46.05 Ft., to a 26.6" Ponderosa Pine
- S 33° 45' W, 43.20 Ft., to a 22.5" Ponderosa Pine
- N 03° 10' W, 48.80 Ft., to a 26" Ponderosa Pine

CAP INSCRIPTION

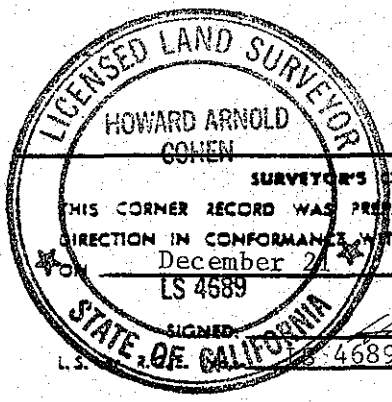
WC
— S 9
W 1/16 S 16
LS 4689
1981

This Witness Corner was set on the section line S 89° 26' 19" W, 140 Ft. from the true position which is in Bass Lake.

Bearings are to the center of trees at base; distances are horizontal to nail and tag (stamped LS 4689) driven into base of trees, unless noted otherwise.

Posted Forest Service Monument and Bearing Tree signs.

Blazed and scribed trees and stamped monument in accord with Bureau of Land Management 1973 "Manual of Surveying Instructions."



SURVEYOR'S CERTIFICATE
THIS CORNER RECORD WAS PREPARED BY ME OR UNDER MY DIRECTION IN CONFORMANCE WITH THE LAND SURVEYORS ACT
December 21, 19 81
LS 4689
SIGNED: Howard Arnold Cohen
L.S. _____

COUNTY SURVEYOR'S CERTIFICATE
THE CORNER RECORD WAS RECEIVED _____ 19____
AND EXAMINED AND FILED _____
BY: [Signature]
TITLE: _____
DOCUMENT No. _____
STATEMENT ON BACK OF SHEET

J - 10
1 04