

# CORNER RECORD

COUNTY OF MADERA T. 7S R. 22E M.D. \_\_\_\_\_ MERIDIAN CALIFORNIA

CORNER TYPE: GOVT. CORNER  MEANDER  RANCHO  CONTROL  OTHER   
 CORNER IDENTIFICATION — DATE OF VISIT August 18 19 81



Center East 1/16 corner Section 15 7/22  
 (SE corner of the W 1/2 NE Section 15 7/22)

CORNER — LEFT AS FOUND  FOUND AND TAGGED  REESTABLISHED OBLITERATED CORNER  RESULT

PHYSICAL DESCRIPTION OF CORNER FOUND; EVIDENCE AND METHOD USED TO IDENTIFY OR REESTABLISH  
 FOUND: 2" iron pipe, tagged LS 4298, 23.1 Ft South & 42.5 Ft West from the CE 1/16 cot. Not Accepted.

CE 1/16 corner established by section subdivision survey.

**PHYSICAL DESCRIPTION OF MONUMENTS RESULT OR PERPETUATED**

Set 30" long aluminum monument, up 6", with a 3 1/4" aluminum cap stamped with the Forest Service logo, the date (1981) and LS 4689. Set fiberglass post about 4' from the monument with a Forest Service "Monument" sign attached.

CALIFORNIA COORDINATE SYSTEM ORDER: FIRST  SECOND  THIRD   
 STATIONS USED: NGS (USC & GS)  STATE  COUNTY  OTHER  STATION \_\_\_\_\_ STATION \_\_\_\_\_  
 ZONE \_\_\_\_\_ ELEVATION \_\_\_\_\_ NORTHINGS (Y) \_\_\_\_\_ EASTINGS (X) \_\_\_\_\_

SKETCH: (Include reference tie or witness points, remarks and topo of area)

CORNER TIES

- N 31° 35' E, 61.37 Ft., to a 34.3" Ponderosa Pine
- S 60° 01' E, 47.28 Ft., to a 17.2" Black Oak
- N 82° 37' W, 41.00 Ft., to a 22.6" forked Black Oak
- N 34° 00' W, 40.17 Ft., to a 24.1" Incense Cedar

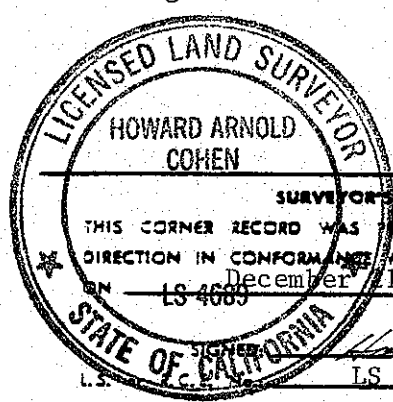
CAP INSCRIPTION

E 1/16  
 C + C  
 S 15  
 LS 4689  
 1981

Bearings are to the center of trees at base; distances are horizontal to nail and tag (stamped LS 4689) driven into base of trees, unless noted otherwise.

Posted Forest Service Monument and Bearing Tree signs.

Blazed and scribed trees and stamped monument in accord with Bureau of Land Management 1973 "Manual of Surveying Instructions."



**SURVEYOR'S CERTIFICATE**  
 THIS CORNER RECORD WAS PREPARED BY ME OR UNDER MY DIRECTION IN CONFORMANCE WITH THE LAND SURVEYORS ACT OF \_\_\_\_\_ December 31 19 81  
 LS 4689  
 SIGNED: Howard Arnold Cohen  
 L.S. \_\_\_\_\_ LS 4689

**COUNTY SURVEYOR'S CERTIFICATE**  
 THE CORNER RECORD WAS RECEIVED \_\_\_\_\_ AND EXAMINED AND FILED \_\_\_\_\_ 19 \_\_\_\_  
 BY: \_\_\_\_\_  
 TITLE: \_\_\_\_\_  
 DOCUMENT No. \_\_\_\_\_  
 STATEMENT ON BACK OF SHEET

L - 16  
 1 19