

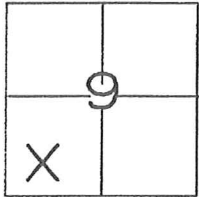
CORNER RECORD

Document Number _____

City of UNINCORPERATED

County of MADERA, California

Brief Legal Description NORTH SHORE ESTATES I, TRACT NO. 217



T.7S., R.22E.

CORNER TYPE

Government Corner Control
 Meander Property
 Rancho Other

Date of Survey JUNE 12, 2015

COORDINATES(Optional)

N. _____
 E. _____
 Zone _____ NAD27 NAD83
 NAD83 Epoch _____
 Elev. _____
 Vert. Datum: NGVD29 NADV88
 Meas. Units: Metric Imperial

Corner - Left as found Found and tagged Established Reestablished Rebuilt

Identification and type of corner found: Evidence used to identify or procedure used to establish or reestablish the corner:
FOUND CORNERS AT RECORD POSITION AS PER NORTH SHORE ESTATES I, TRACT NO. 217, ON FILE IN BOOK 37, PAGES 20-23, M.C.R. (REFER TO SHEET 2 FOR MONUMENT DESCRIPTION)

A description of the physical condition of the monument as found and as set or reset:
REESTABLISHED CORNERS AT RECORD POSITION AS PER NORTH SHORE ESTATES I, TRACT NO. 217, ON FILE IN BOOK 37, PAGES 20-23, M.C.R. (REFER TO SHEET 2 FOR MONUMENT DESCRIPTION)

SURVEYOR'S STATEMENT

This Corner Record was prepared by me or under my direction in conformance with the Land Surveyor's Act on JUNE 15, 2015.

Signed [Signature] P.L.S. or R.C.E. No.: PLS 8393



COUNTY SURVEYOR'S STATEMENT

This Corner Record was received July 7, 2015 and examined and filed August 4, 2015.

Signed [Signature] P.L.S. or R.C.E. No.: PLS 6968

Title Acting County Surveyor

County Surveyor's Comment _____



CORNER RECORD

NORTH SHORE ESTATES I
TRACT NO. 217
ON FILE IN BOOK 37, PAGES 20-23, M.C.R.

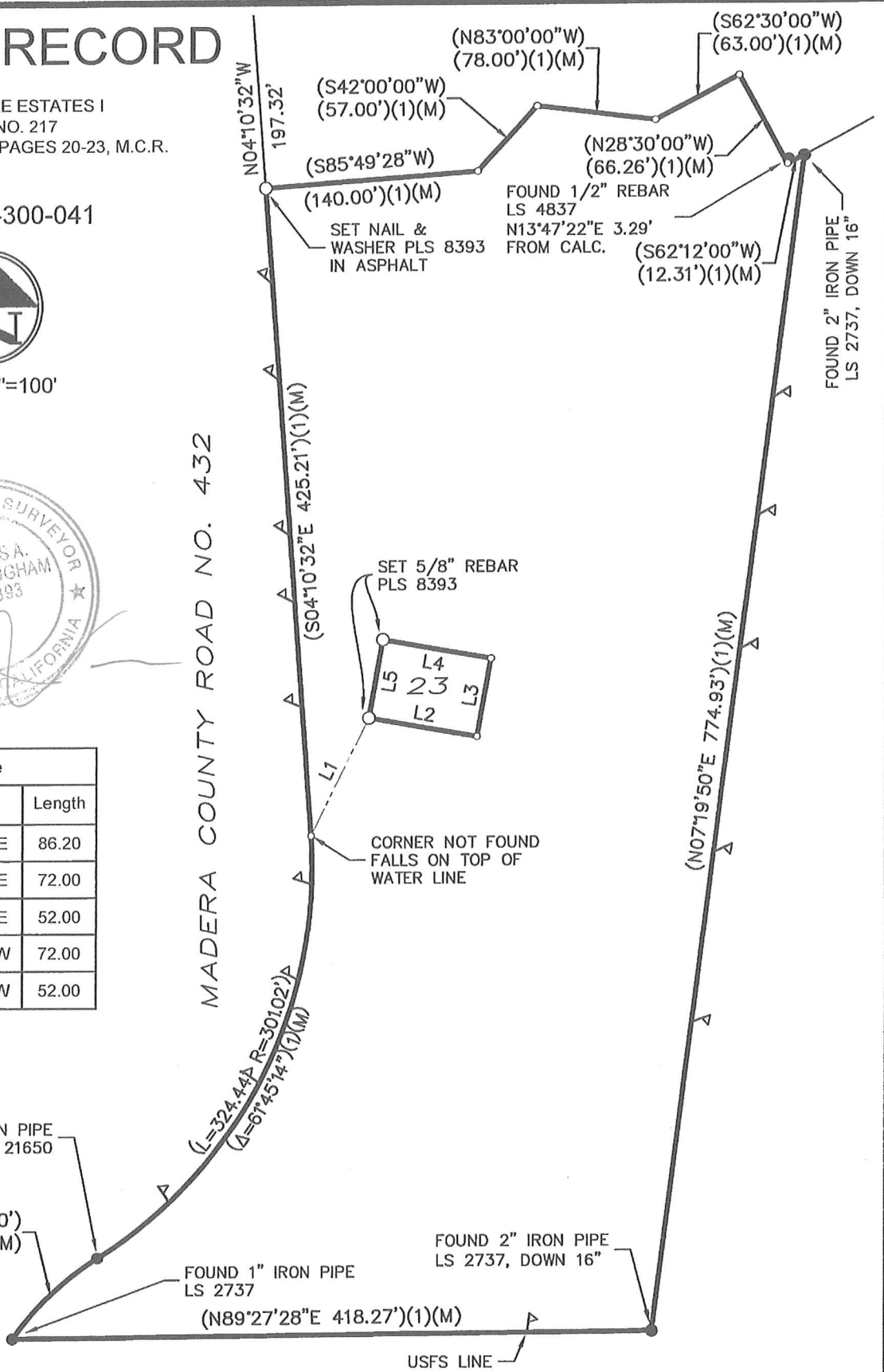
APN 059-300-041



SCALE 1"=100'



Line Table		
Line #	Direction	Length
L1	N26°05'38"E	86.20
L2	S80°03'32"E	72.00
L3	N09°56'28"E	52.00
L4	N80°03'32"W	72.00
L5	S09°56'28"W	52.00



LEGEND

- SURVEY MONUMENT (AS NOTED) ○ DIM. POINT NOTHING SET/FOUND
- SET MONUMENT AS NOTED † SET 60D NAIL W/ LATH & FENCE POST
- (1)(M) RECORD DATA AS PER NORTH SHORE ESTATES / SAME AS MEASURED

JONES SNYDER & ASSOCIATES
P.O. BOX 2292, OAKHURST, CA 93644
(559)683-7661 WWW.JSSURVEYING.COM

DATE: 06/15/15
JOB NO: 15-176

DWG FILE: 15-176MOS.dwg
DRAWN BY: NAV