

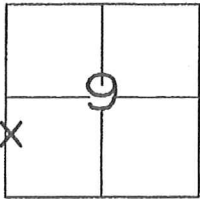
CORNER RECORD

Document Number _____

City of UNINCORPORATED

County of MADERA, California

Brief Legal Description THE NORTHWEST CORNER OF LOT 12 OF THE FALLS TRACT, BOOK 14 OF MAPS AT PAGE 32, M.C.R., BASS LAKE, CA.



T.7S., R.22E.

CORNER TYPE

Government Corner Control
 Meander Property
 Rancho Other

Date of Survey 04/21/2015

COORDINATES(Optional)

N. _____
 E. _____
 Zone _____ NAD27 NAD83
 NAD83 Epoch _____
 Elev. _____
 Vert. Datum: NGVD29 NADV88
 Meas. Units: Metric Imperial

Corner - Left as found Found and tagged Established Reestablished Rebuilt

Identification and type of corner found: Evidence used to identify or procedure used to establish or reestablish the corner:
REESTABLISHED THE NORTHWEST CORNER OF LOT 12 BY PRORATION METHOD BETWEEN FOUND ORIGINAL CONTROLLING MONUMENTS AT THE SOUTHWEST CORNER OF LOT 12 AND THE NORTHWEST CORNER OF LOT 13.

A description of the physical condition of the monument as found and as set or reset: _____
SET 5/8" REBAR, TAGGED LS 8393, UP 4".

SURVEYOR'S STATEMENT

This Corner Record was prepared by me or under my direction in conformance with the Land Surveyor's Act on JUNE 23, 2015.

Signed [Signature] P.L.S. or R.C.E. No.: 8393



COUNTY SURVEYOR'S STATEMENT

This Corner Record was received July 7, 2015 and examined and filed August 4, 2015.

Signed [Signature] P.L.S. or R.C.E. No.: PLS 6968

Title Acting County Surveyor

County Surveyor's Comment _____





SCALE 1"=40'

CORNER RECORD

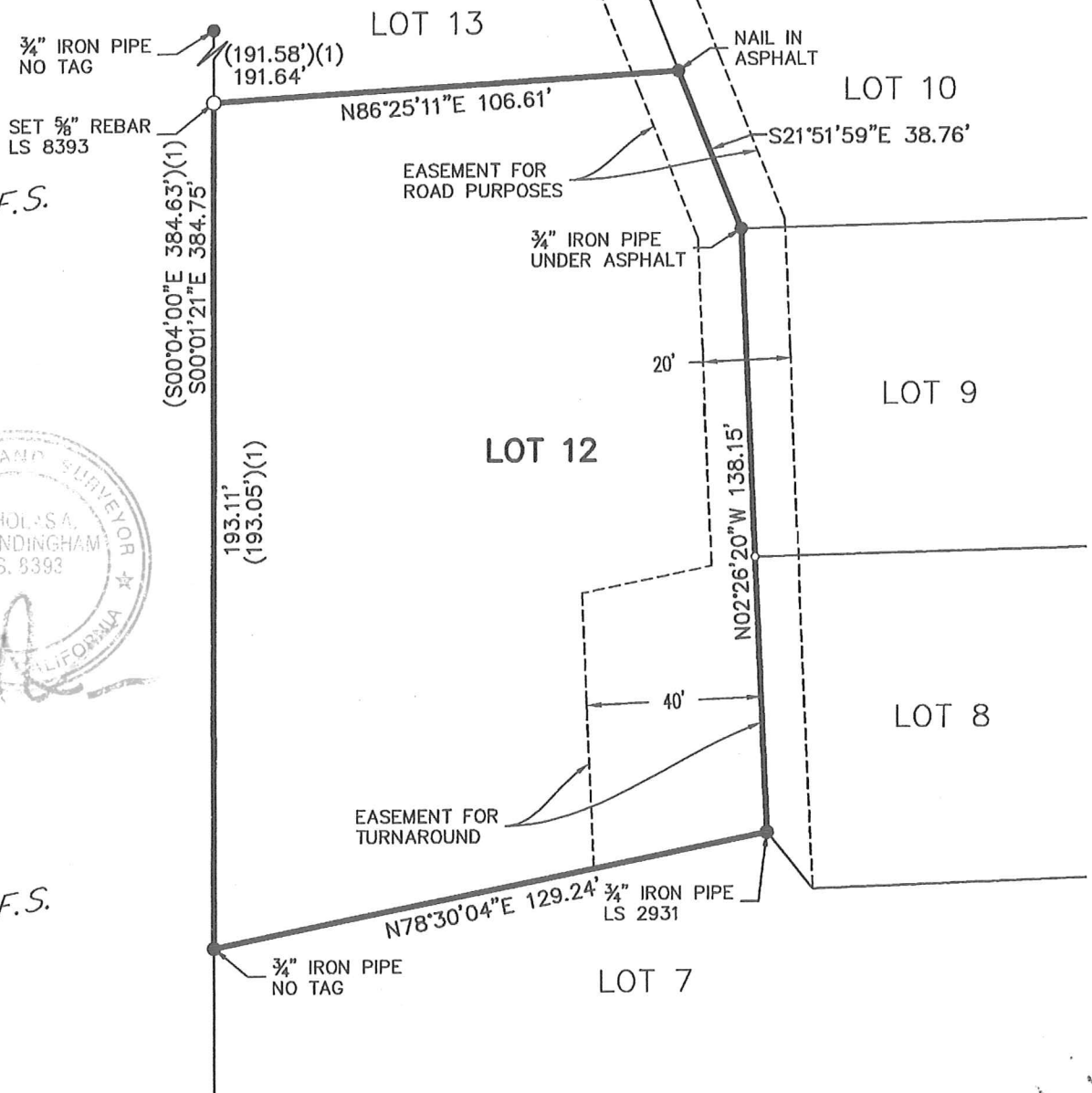
OF

LOT 12 OF THE FALLS TRACT, RECORDED IN
BOOK 14 OF MAPS AT PAGE 32, M.C.R.
LOCATED IN SECTION 9, T.7S., R.22E., M.D.B.&M.

U.S.F.S.



U.S.F.S.



LEGEND

- SURVEY MONUMENT (AS NOTED)
- SET 5/8" REBAR, TAGGED LS 8393
- ┆ SET LINE POINT
- DIMENSION POINT (NOTHING FOUND OR SET)
- (...)(1) EASEMENT LINE

- PROPERTY LINE
- ADJOINING PROPERTY LINE
- - - - - BK. 14, PG. 32, M.C.R.

JONES SNYDER & ASSOCIATES
P.O. BOX 2292, OAKHURST, CA 93644
(559)683-7661 WWW.JSSURVEYING.COM

DATE: JUNE 23, 2015 DWG FILE: 15-126MOS
JOB NO: 15-126 DRAWN BY: RJD