

CORNER RECORD

COUNTY OF Madera T. T.S. R. 22 E M.D.B. 4 MERIDIAN CALIFORNIA

CORNER TYPE: GOVT. CORNER MEANDER RANCHO CONTROL OTHER

CORNER IDENTIFICATION - DATE OF VISIT January 6 1983



Northwest corner of Parcel 1 per Map No. 1397, book 24, page 133 M.C.O.R. (Located in SW 1/4 SW 1/4 Sec. 9.)

CORNER - LEFT AS FOUND FOUND AND TAGGED REESTABLISHED OBLITERATED CORNER REBUILT

PHYSICAL DESCRIPTION OF CORNER FOUND; EVIDENCE AND METHOD USED TO IDENTIFY OR REESTABLISH

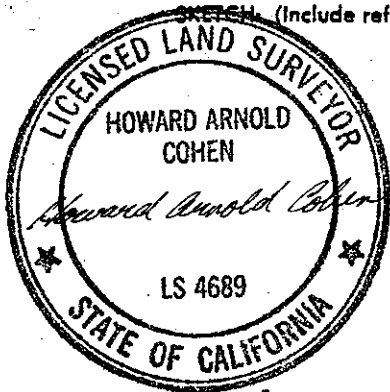
Found 1" O.D., I.P., down 1.8', tagged LS 2737, per Map No. 1397, book 24, page 133, M.C.O.R.

PHYSICAL DESCRIPTION OF MONUMENTS REBUILT OR PERPETUATED

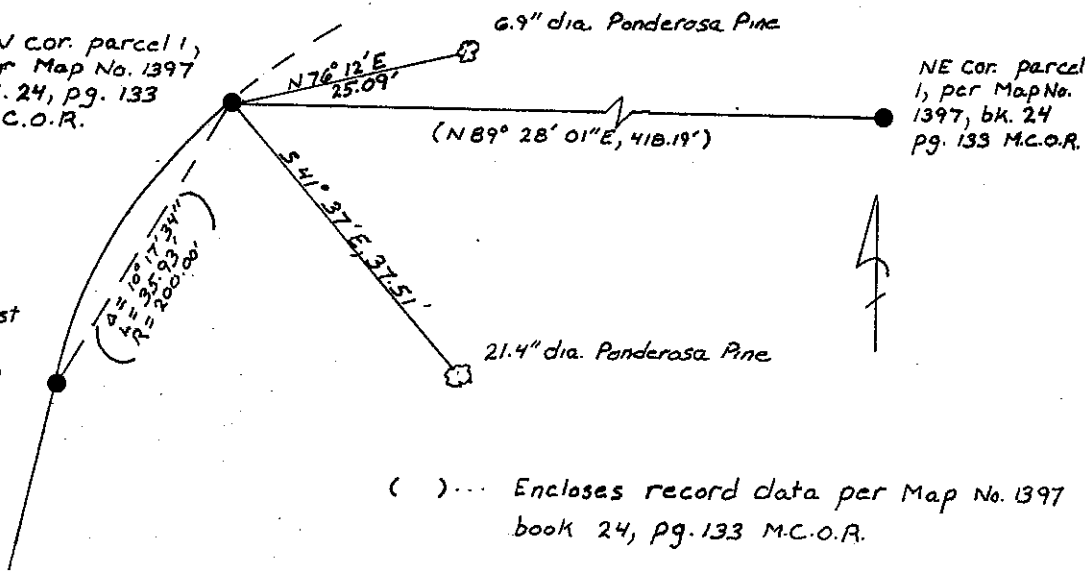
Set F.S.M., flush with ground over found pipe. Set metal post with a Forest Service Monument and Boundary sign 6'± SE of monument.
 F.S.M. - Aluminum monument, 2 1/2" O.D., 30" long with a 3 1/4" O.D. aluminum cap, Stamped with L.S. 4689 and the Forest Service logo.

CALIFORNIA COORDINATE SYSTEM ORDER: FIRST SECOND THIRD
 STATIONS USED: NGS (USC & GS) STATE COUNTY OTHER STATION _____ STATION _____
 ZONE _____ ELEVATION _____ NORTHINGS (Y) _____ EASTINGS (X) _____

SKETCH (Include reference tie or witness points, remarks and topo of area)



NW cor. parcel 1, per Map No. 1397 bk. 24, pg. 133 M.C.O.R.



Beg. crv. on West line of parcel 1, per Map No. 1397, bk. 24, pg. 133 M.C.O.R.

Bearings are to the center of trees at the base. Distances are horizontal to a nail and tag (Stamped LS 4689) driven into the side-center of the root crown.

SURVEYOR'S CERTIFICATE

THIS CORNER RECORD WAS PREPARED BY ME OR UNDER MY DIRECTION IN CONFORMANCE WITH THE LAND SURVEYORS ACT ON Febr. 2 1983

SIGNED: Howard Arnold Cohen

L.S. or R.C.E. No.: 4689

COUNTY SURVEYOR'S CERTIFICATE

THE CORNER RECORD WAS RECEIVED _____ 19____ AND EXAMINED AND FILED _____ 19____

BY: Howard Arnold Cohen

TITLE: _____

DOCUMENT No. _____

STATEMENT ON BACK OF SHEET