

CORNER RECORD

COUNTY OF MADERA T. 7S R. 22E. M.D.B.A MERIDIAN CALIF.

CORNER TYPE: GOV'T. CORNER () MEANDER ( ) RANCHO ( ) CONTROL ( ) OTHER ( )

CORNER IDENTIFICATION --- DATE OF VISIT 25 FEB. 1977 1977



E 1/4 COR. SEC. 8-7-22, U.S.G.L.O. CAP

CORNER -- LEFT AS FOUND () FOUND & TAGGED ( ) REESTABLISHED OBLITERATED CORNER ( )  
REBUILT ( )

PHYSICAL DESCRIPTION OF CORNER FOUND: EVIDENCE & METHOD USED TO IDENTIFY OR REESTABLISH:

2 1/2" BRASS CAPPED MONUMENT, STAMPED FOR E 1/4 COR. SEC. 8-7-22, NEAR BASS LAKE RD.

PHYSICAL DESCRIPTION OF MONUMENTS REBUILT OR PERPETUATED:

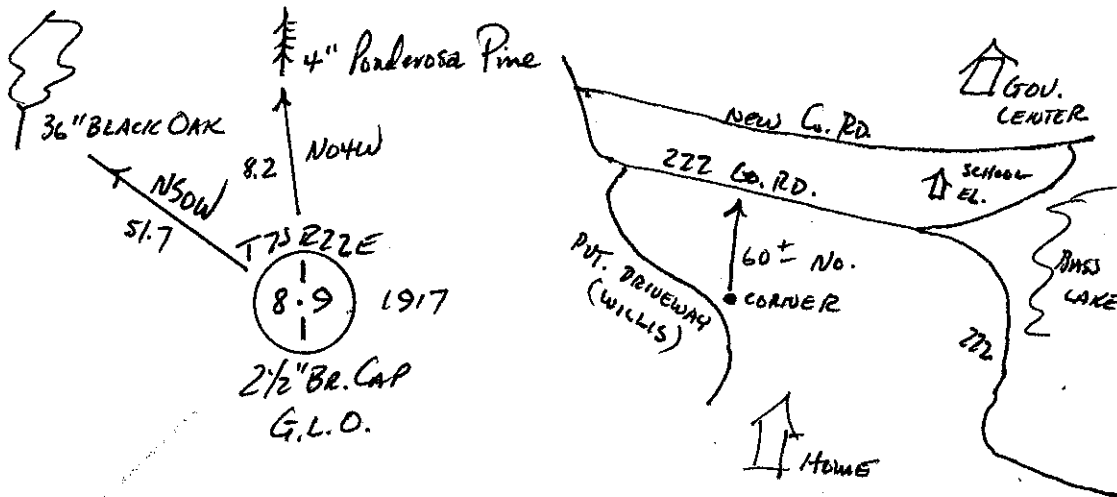
CALIFORNIA COORDINATE SYSTEM ORDER: FIRST ( ) SECOND ( ) THIRD ( )

STATIONS USED: NOS (USC & GS) ( ) STATE ( ) COUNTY ( ) OTHER ( ) STATION \_\_\_\_\_

STATION \_\_\_\_\_ ZONE \_\_\_\_\_ ELEVATION \_\_\_\_\_ NORTHINGS (Y) \_\_\_\_\_

EASTINGS (X) \_\_\_\_\_

SKETCH: (INCLUDE REFERENCE TIE OR WITNESS POINTS, REMARKS AND TOPO OF AREA)



SURVEYOR'S CERTIFICATE

THIS CORNER RECORD WAS PREPARED BY ME UNDER MY SUPERVISION IN CONFORMANCE WITH THE LAND SURVEYORS ACT ON 25

FEB. JENSEN 1977

SIGNED

L.S. or R.C.E. NO.

L.S. 4261

NO. 4261

SEAL

COUNTY SURVEYOR'S CERTIFICATE

THE CORNER RECORD WAS RECEIVED 3-1-77 and examined and filed mar 3 1977

BY: A. Grotte

TITLE: Co. Brags.

DOCUMENT NO. 77-03-03

STATEMENT ON BACK OF SHEET

YES ( ) NO ()