

**CORNER RECORD**

COUNTY OF MADERA T. 7 S. R. 22 E. M.D.B. & MERIDIAN CALIFORNIA

CORNER TYPE: GOV'T. CORNER  MEANDER  RANCHO  CONTROL  OTHER

CORNER IDENTIFICATION - DATE OF VISIT Aug. 6 19 75



W 1/4 CORNER

CORNER - LEFT AS FOUND  FOUND AND TAGGED  REESTABLISHED OBLITERATED CORNER  REBUILT

PHYSICAL DESCRIPTION OF CORNER FOUND; EVIDENCE AND METHOD USED TO IDENTIFY OR REESTABLISH

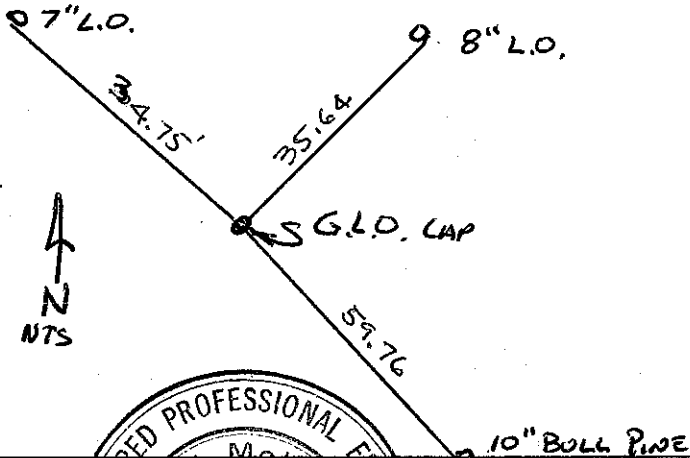
2" G.L.O. BRASS CAP 10 3/4" I.P.

PHYSICAL DESCRIPTION OF MONUMENTS REBUILT OR PERPETUATED

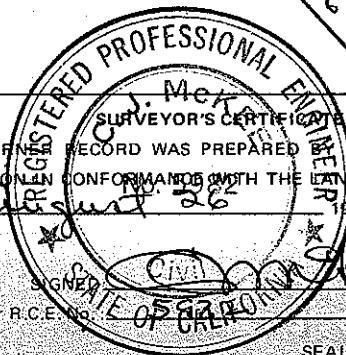
CALIFORNIA COORDINATE SYSTEM ORDER: FIRST  SECOND  THIRD   
 STATIONS USED: NGS (USC & GS)  STATE  COUNTY  OTHER  STATION \_\_\_\_\_ STATION \_\_\_\_\_  
 ZONE \_\_\_\_\_ ELEVATION \_\_\_\_\_ NORTHINGS (Y) \_\_\_\_\_ EASTINGS (X) \_\_\_\_\_

SKETCH: (Include reference tie or witness points, remarks and topo of area)

- 12 PENNY SPIKE SW SIDE 7" L.O. N 61° 00' W 34.75'
- " " " SE SIDE 8" L.O. N 50° 15' E 35.64'
- " " " SW SIDE 10" BULL PINE S 29° 00' E 59.76'



L.O. = LIVE OAK



THIS CORNER RECORD WAS PREPARED BY ME OR UNDER MY DIRECTION IN CONFORMANCE WITH THE LAND SURVEYORS ACT ON August 26 19 75.

SIGNED \_\_\_\_\_  
 C.E. or R.C.E. No. \_\_\_\_\_

SEAL

COUNTY SURVEYOR'S CERTIFICATE

THE CORNER RECORD WAS RECEIVED Aug 28 19 75  
 AND EXAMINED AND FILED Aug 29 19 75

BY: [Signature]  
 TITLE: Civil Engr Ass't.

DOCUMENT No. 75-31-01  
 STATEMENT ON BACK OF SHEET

YES  NO