

CORNER RECORD

COUNTY OF MADERA T. 7 S. R. 22 E. M.D.B. & MERIDIAN CALIFORNIA
 CORNER TYPE: GOV'T. CORNER MEANDER RANCHO CONTROL OTHER
 CORNER IDENTIFICATION - DATE OF VISIT Aug. 6 19 75



SE CORNER

CORNER - LEFT AS FOUND FOUND AND TAGGED REESTABLISHED OBLITERATED CORNER REBUILT

PHYSICAL DESCRIPTION OF CORNER FOUND; EVIDENCE AND METHOD USED TO IDENTIFY OR REESTABLISH

2" G.L.O. BRASS CAP IN 1 1/2" I.P.

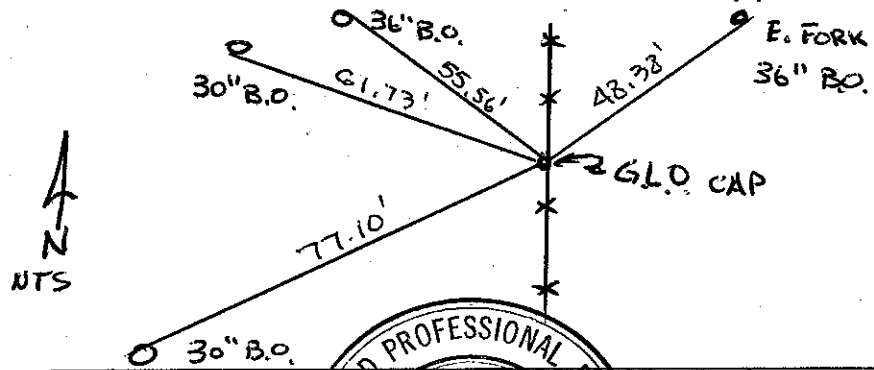
PHYSICAL DESCRIPTION OF MONUMENTS REBUILT OR PERPETUATED

CALIFORNIA COORDINATE SYSTEM ORDER: FIRST SECOND THIRD
 STATIONS USED: NGS (USC & GS) STATE COUNTY OTHER STATION _____ STATION _____
 ZONE _____ ELEVATION _____ NORTHINGS (Y) _____ EASTINGS (X) _____

SKETCH: (Include reference tie or witness points, remarks and topo of area)

NAIL & TAG RCE 5982 NW SIDE 30" B.O. S 65° 35' W 77.10'
" " " " " SW SIDE 30" B.O. N 60° 05' W 61.73'
" " " " " NE SIDE 36" B.O. N 28° 00' W 55.56'
" " " " " E/S E. FORK 36" B.O. N 49° 50' E 48.38'

No. 50. B.-W. FENCE RUNS THRU COR.



SURVEYOR'S CERTIFICATE
 THIS CORNER RECORD WAS PREPARED BY ME OR UNDER MY DIRECTION IN CONFORMANCE WITH THE LAND SURVEYERS ACT ON August 26 19 75 FILE NO. 59825

SIGNED: [Signature]
 R.C.E. No. 59825



COUNTY SURVEYOR'S CERTIFICATE
 THE CORNER RECORD WAS RECEIVED Aug. 28 19 75
 AND EXAMINED AND FILED Aug. 29 19 75

BY: [Signature]
 TITLE: Civil Engr. Asst

DOCUMENT No. 75-31-08

STATEMENT ON BACK OF SHEET
 YES NO