

# CORNER RECORD

COUNTY OF MADERA T. 7 S. R. 22 E. M.D.B. & MERIDIAN CALIFORNIA  
 CORNER TYPE: GOV'T. CORNER  MEANDER  RANCHO  CONTROL  OTHER   
 CORNER IDENTIFICATION - DATE OF VISIT Aug. 6 19 75



S 1/4 CORNER

CORNER - LEFT AS FOUND  FOUND AND TAGGED  REESTABLISHED OBLITERATED CORNER  REBUILT

PHYSICAL DESCRIPTION OF CORNER FOUND; EVIDENCE AND METHOD USED TO IDENTIFY OR REESTABLISH

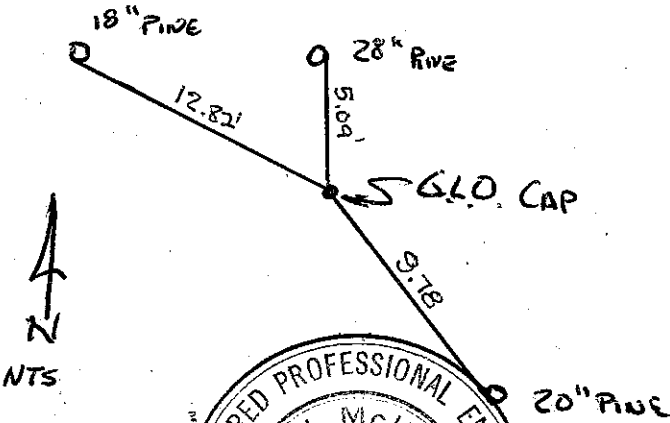
2" G.L.O. BRASS CAP 10 3/4" I.P.

PHYSICAL DESCRIPTION OF MONUMENTS REBUILT OR PERPETUATED

CALIFORNIA COORDINATE SYSTEM ORDER: FIRST  SECOND  THIRD   
 STATIONS USED: NGS (USC & GS)  STATE  COUNTY  OTHER  STATION \_\_\_\_\_ STATION \_\_\_\_\_  
 ZONE \_\_\_\_\_ ELEVATION \_\_\_\_\_ NORTHINGS (Y) \_\_\_\_\_ EASTINGS (X) \_\_\_\_\_

SKETCH: (Include reference tie or witness points, remarks and topo of area)

NAIL & TAG RCE 5982 S.W. SIDE 18" PINE N 77°20'W 12.82'  
" " " " " E. SIDE 28" PINE N 0°30'W 5.09'  
" " " " " S.W. SIDE 20" PINE S 30°45'E 9.78'



REGISTERED PROFESSIONAL ENGINEER  
 J. MCKEY  
 SURVEYOR'S CERTIFICATE  
 THIS CORNER RECORD WAS PREPARED BY ME OR UNDER MY DIRECTION IN CONFORMANCE WITH THE LAND SURVEYORS ACT ON AUGUST 26 19 75.  
 SIGNED [Signature]  
 L.S. or R.C.E. No. 5082 CALIFORNIA  
 SEAL

COUNTY SURVEYOR'S CERTIFICATE  
 THE CORNER RECORD WAS RECEIVED Aug. 28 19 75  
 AND EXAMINED AND FILED Aug. 29 19 75  
 BY: [Signature]  
 TITLE: Civil Engr Asst  
 DOCUMENT No. 75-31-06  
 STATEMENT ON BACK OF SHEET YES  NO