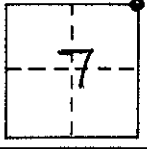


# CORNER RECORD

COUNTY OF MADERA T. 7.S. R. 22E. NDBE MERIDIAN CALIFORNIA  
 CORNER TYPE: GOV'T. CORNER  MEANDER  RANCHO  CONTROL  OTHER   
 CORNER IDENTIFICATION - DATE OF VISIT Aug 5 19 75



NE CORNER

CORNER - LEFT AS FOUND  FOUND AND TAGGED  REESTABLISHED OBLITERATED CORNER  REBUILT

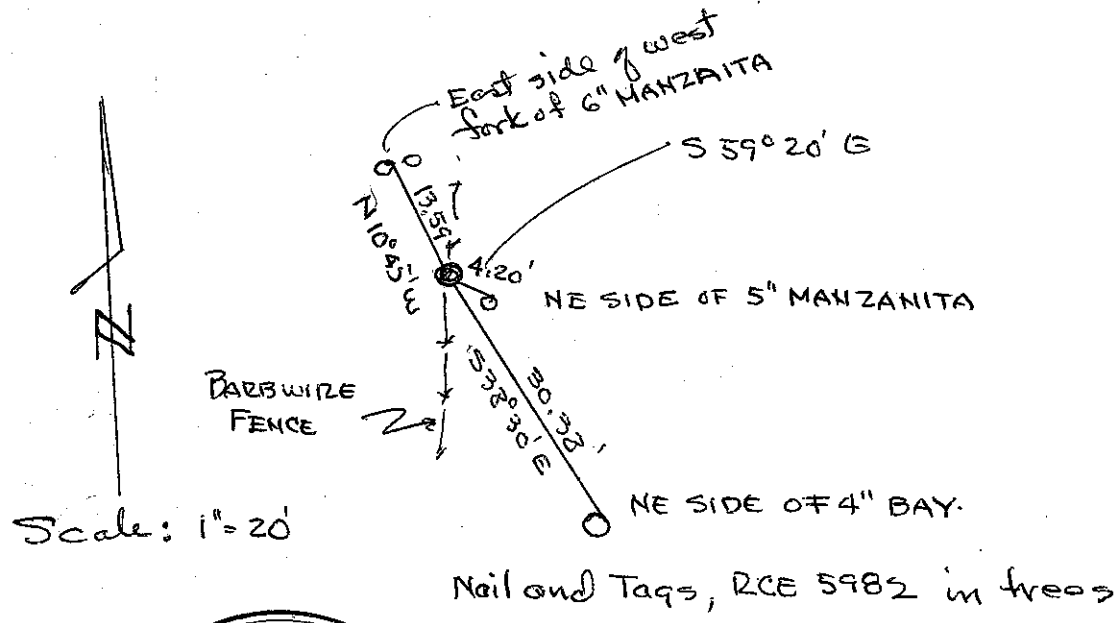
PHYSICAL DESCRIPTION OF CORNER FOUND; EVIDENCE AND METHOD USED TO IDENTIFY OR REESTABLISH

**2" G.L.O. BRASS CAP IN 1 1/2" IRON PIPE**

PHYSICAL DESCRIPTION OF MONUMENTS REBUILT OR PERPETUATED

CALIFORNIA COORDINATE SYSTEM ORDER: FIRST  SECOND  THIRD   
 STATIONS USED: NGS (USC & GS)  STATE  COUNTY  OTHER  STATION \_\_\_\_\_ STATION \_\_\_\_\_  
 ZONE \_\_\_\_\_ ELEVATION \_\_\_\_\_ NORTHINGS (Y) \_\_\_\_\_ EASTINGS (X) \_\_\_\_\_

SKETCH: (Include reference tie or witness points, remarks and topo of area)



REGISTERED PROFESSIONAL ENGINEER  
 MCKEY  
 No. 5982-75  
 STATE OF CALIFORNIA  
 SEAL

THIS CORNER RECORD WAS PREPARED BY ME, OR UNDER MY DIRECTION IN CONFORMANCE WITH THE LAND SURVEYORS ACT ON August 28 19 75

SIGNED: \_\_\_\_\_  
 L.S. or R.C.E. No. R. 5982-75

COUNTY SURVEYOR'S CERTIFICATE

THE CORNER RECORD WAS RECEIVED Aug. 28 19 75  
 AND EXAMINED AND FILED Aug. 29 19 75  
 BY: John P. ...  
 TITLE: Civil Engr. Asst.  
 DOCUMENT No. 75-31-04  
 STATEMENT ON BACK OF SHEET YES  NO