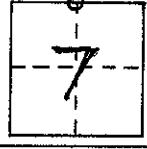


CORNER RECORD

COUNTY OF MADEIRA T. 7S R. 22E M.D.B.E MERIDIAN CALIFORNIA
 CORNER TYPE: GOV'T. CORNER MEANDER RANCHO CONTROL OTHER
 CORNER IDENTIFICATION - DATE OF VISIT August 5 19 75



N 1/4 CORNER

CORNER - LEFT AS FOUND FOUND AND TAGGED REESTABLISHED OBLITERATED CORNER REBUILT

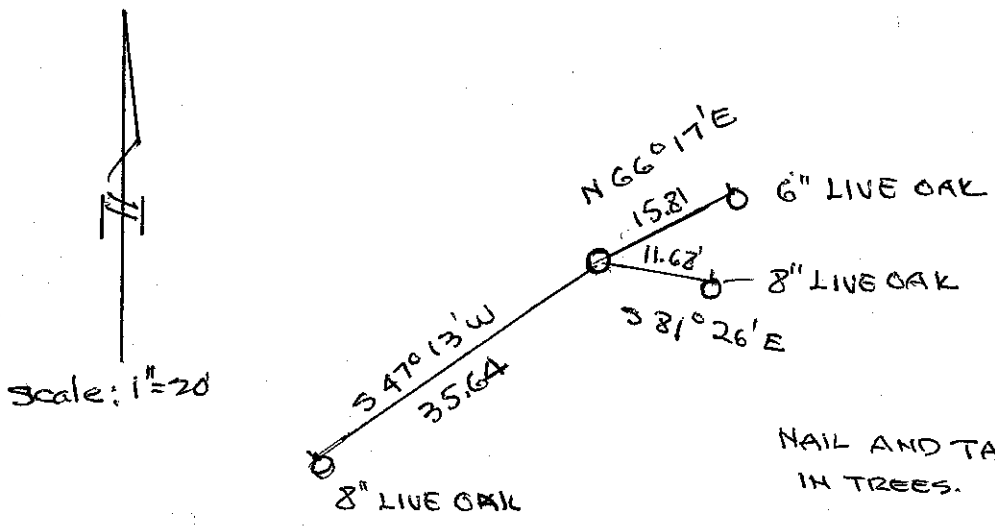
PHYSICAL DESCRIPTION OF CORNER FOUND; EVIDENCE AND METHOD USED TO IDENTIFY OR REESTABLISH

2" G.L.O. BRASS CAP IN 3/4" IRON PIPE

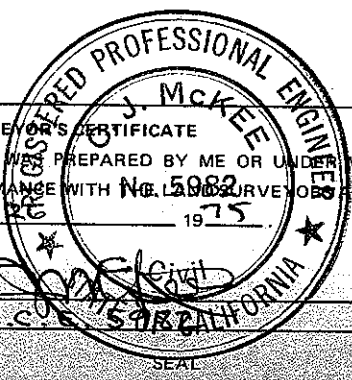
PHYSICAL DESCRIPTION OF MONUMENTS REBUILT OR PERPETUATED

CALIFORNIA COORDINATE SYSTEM ORDER: FIRST SECOND THIRD
 STATIONS USED: NGS (USC & GS) STATE COUNTY OTHER STATION _____ STATION _____
 ZONE _____ ELEVATION _____ NORTHINGS (Y) _____ EASTINGS (X) _____

SKETCH: (Include reference tie or witness points, remarks and topo of area)



NAIL AND TAG RCE 5982 IN TREES.



SURVEYOR'S CERTIFICATE
 THIS CORNER RECORD WAS PREPARED BY ME OR UNDER MY DIRECTION IN CONFORMANCE WITH THE LAND SURVEYING ACT ON August 26 19 75

SIGNED _____
 L.S. or R.C.E. No. R.C.E. 5982

COUNTY SURVEYOR'S CERTIFICATE
 THE CORNER RECORD WAS RECEIVED Aug. 28 19 75
 AND EXAMINED AND FILED Aug. 29 19 75

BY: J. P. [Signature]
 TITLE: Civil Engr. Asst

DOCUMENT No. 75-31-05

STATEMENT ON BACK OF SHEET

YES NO