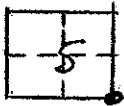


CORNER RECORD

COUNTY OF MADERA T. 7S R. 22E. M.D.B. & MERIDIAN CALIF.

CORNER TYPE: GOV'T. CORNER () MEANDER () RANCHO () CONTROL () OTHER ()

CORNER IDENTIFICATION --- DATE OF VISIT 15 FEB. 1977 1977



SEC. COR. S-7-22, 2 1/2 BR. CAP MON., G.L.O.

CORNER -- LEFT AS FOUND () FOUND & TAGGED () REESTABLISHED OBLITERATED CORNER ()
REBUILT ()

PHYSICAL DESCRIPTION OF CORNER FOUND: EVIDENCE & METHOD USED TO IDENTIFY OR REESTABLISH:

2 1/2" BRASS CAPPED MONUMENT, STAMPED FOR S.E. 5, G.L.O. 1917

PHYSICAL DESCRIPTION OF MONUMENTS REBUILT OR PERPETUATED:

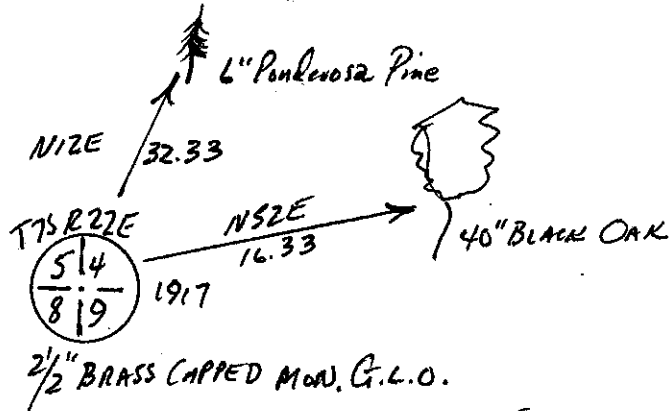
CALIFORNIA COORDINATE SYSTEM ORDER: FIRST () SECOND () THIRD ()

STATIONS USED: NOS (USC & GS) () STATE () COUNTY () OTHER () STATION _____

STATION _____ ZONE _____ ELEVATION _____ NORTHINGS (Y) _____

EASTINGS (X) _____

SKETCH: (INCLUDE REFERENCE TIE OR WITNESS POINTS, REMARKS AND TOPO OF AREA)

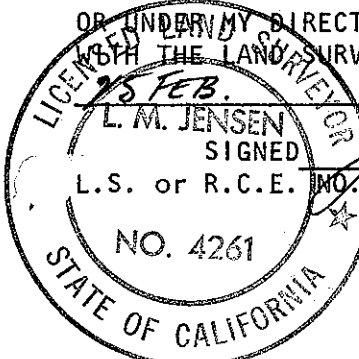


CORNER IN N-S FENCE ABOVE VALLEY FLOOR (OLD AIRPORT) ON
RIDGE WEST.

SURVEYOR'S CERTIFICATE

THIS CORNER RECORD WAS PREPARED BY ME OR UNDER MY DIRECTION IN CONFORMANCE WITH THE LAND SURVEYORS ACT ON

15 FEB. 1977
L. M. JENSEN
SIGNED [Signature]
L.S. or R.C.E. NO. L.S. 4261



COUNTY SURVEYOR'S CERTIFICATE

THE CORNER RECORD WAS RECEIVED 3-1-77 and examined and filed mar 3 1977

BY: [Signature]
TITLE: C. Engr.

DOCUMENT NO. 77-03-04
STATEMENT ON BACK OF SHEET
YES () NO (X)