

CORNER RECORD

COUNTY OF MADEIRA T. 7S R. 22E. M.D.B. & MERIDIAN CALIF.

CORNER TYPE: GOV'T. CORNER () MEANDER () RANCHO () CONTROL () OTHER ()

CORNER IDENTIFICATION --- DATE OF VISIT 25 FEB. 19 77



N.W. COR. SEC. 5 - 722

CORNER -- LEFT AS FOUND () FOUND & TAGGED () REESTABLISHED OBLITERATED CORNER ()
REBUILT ()

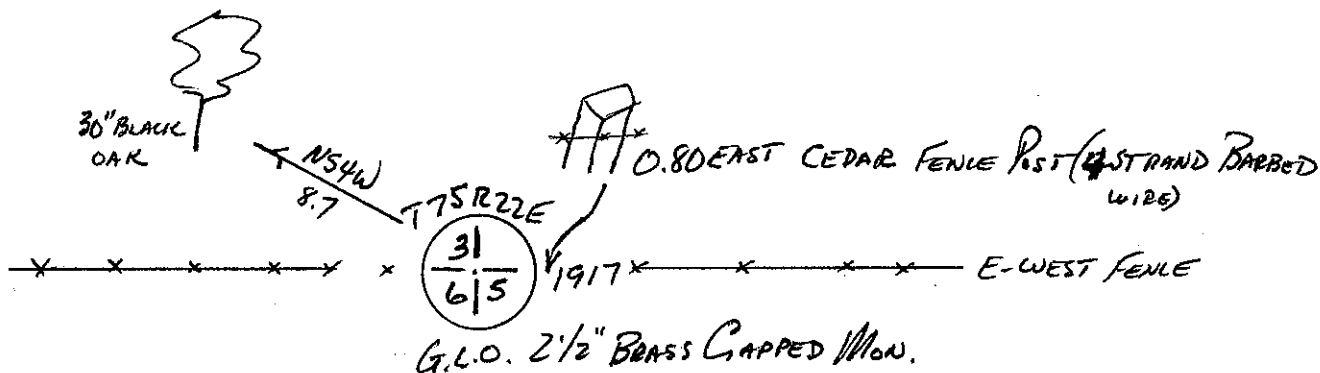
PHYSICAL DESCRIPTION OF CORNER FOUND: EVIDENCE & METHOD USED TO IDENTIFY OR REESTABLISH:

2 1/2" BRASS CAPPED MONUMENT, STAMPED CLOSING CORNER 31
1917 G.L.O. SURVEY. 6/5
1917

PHYSICAL DESCRIPTION OF MONUMENTS REBUILT OR PERPETUATED:

CALIFORNIA COORDINATE SYSTEM ORDER: FIRST () SECOND () THIRD ()
STATIONS USED: NOS (USC & GS) () STATE () COUNTY () OTHER () STATION _____
STATION _____ ZONE _____ ELEVATION _____ NORTHINGS (Y) _____
EASTINGS (X) _____

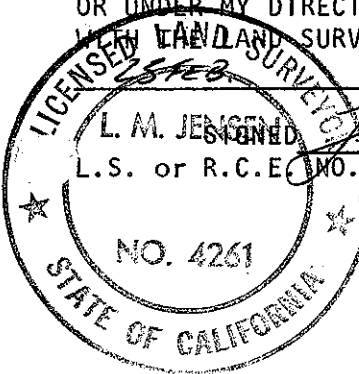
SKETCH: (INCLUDE REFERENCE TIE OR WITNESS POINTS, REMARKS AND TOPO OF AREA)



G.L.O. 2 1/2" BRASS CAPPED MON.
THIS CORNER LIES ON A SMALL FLAT, OFF OLD ROAD TO CLEW JONES PROPERTY
ACCESS VIA POWDEROSA WAY -

SURVEYOR'S CERTIFICATE

THIS CORNER RECORD WAS PREPARED BY ME OR UNDER MY DIRECTION IN CONFORMANCE WITH THE LAND SURVEYORS ACT ON _____
25 FEB. 19 77



COUNTY SURVEYOR'S CERTIFICATE

THE CORNER RECORD WAS RECEIVED 3-1-77 and examined and filed Mar 3 1977
BY: A. Grote
TITLE: Co. Engr.

DOCUMENT NO. 77-03-02
STATEMENT ON BACK OF SHEET
YES () NO ()