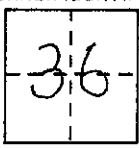


### CORNER RECORD

COUNTY OF Madera T. 7S R. 21E Mt. Diablo MERIDIAN CALIFORNIA  
 CORNER TYPE: GOV'T. CORNER  MEANDER  RANCHO  CONTROL  OTHER   
 CORNER IDENTIFICATION - DATE OF VISIT 4-19 1990



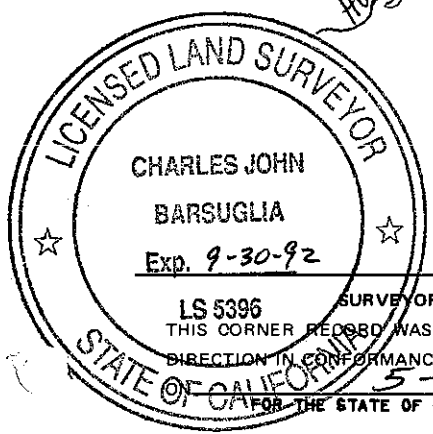
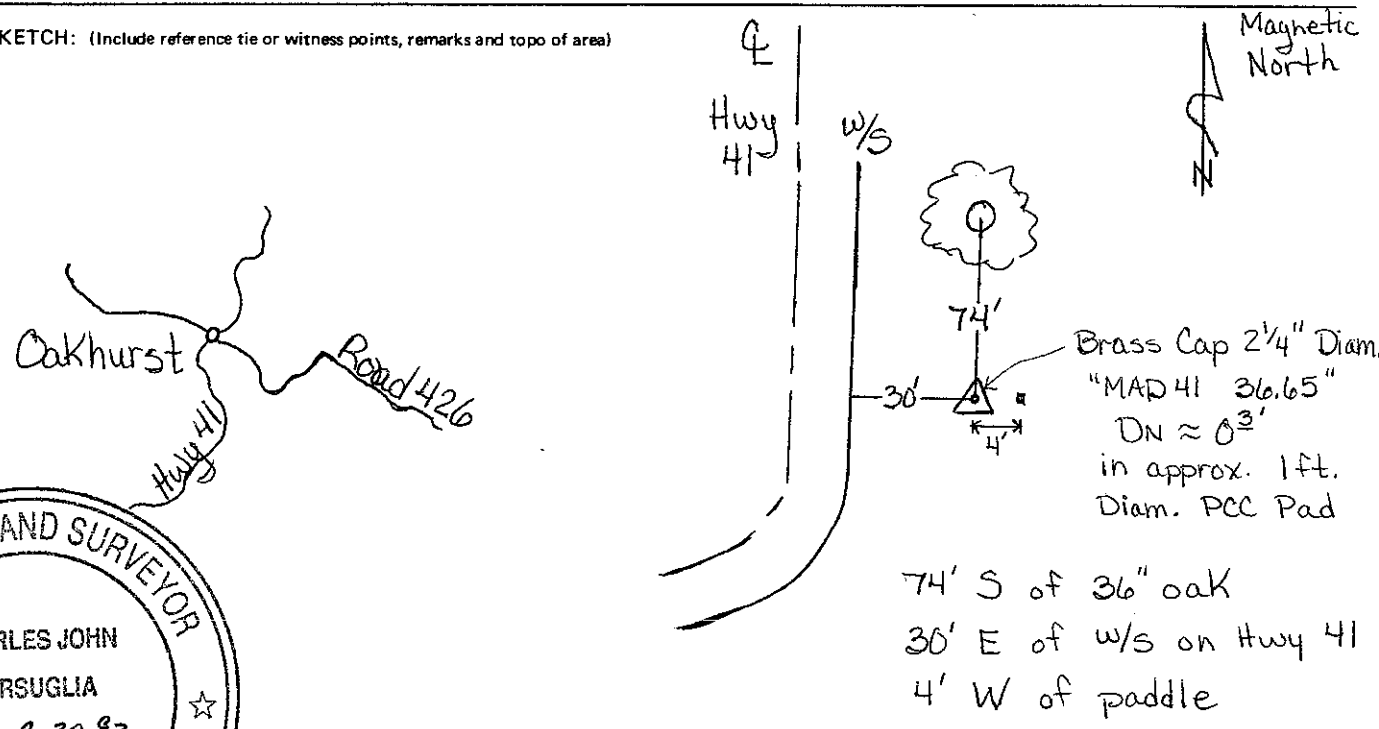
CORNER - LEFT AS FOUND  FOUND AND TAGGED  REESTABLISHED OBLITERATED CORNER  REBUILT

PHYSICAL DESCRIPTION OF CORNER FOUND; EVIDENCE AND METHOD USED TO IDENTIFY OR REESTABLISH

PHYSICAL DESCRIPTION OF MONUMENTS REBUILT OR PERPETUATED (Set) GPS - Mad 41 36.65 -  
 Beginning at the "T" intersection at Road 426 and Hwy 41 in Oakhurst, drive N to NE on Hwy. 41 toward Yosemite 1.0 miles. Monument on right side of Hwy. 41 opposite the Elks Lodge building. Monument has a paddle approximately 4 feet east of monument.

CALIFORNIA COORDINATE SYSTEM ORDER: FIRST  SECOND  THIRD   
 STATIONS USED: NGS (USC & GSI)  STATE  COUNTY  OTHER  STATION \_\_\_\_\_ STATION \_\_\_\_\_  
 ZONE 3 ELEVATION 2376.73 NORTHINGS (Y) 732488.6578 EASTINGS (X) 1813643.2175

SKETCH: (Include reference tie or witness points, remarks and topo of area)



LS 5396 SURVEYOR'S CERTIFICATE  
 THIS CORNER RECORD WAS PREPARED BY ME OR UNDER MY DIRECTION IN CONFORMANCE WITH THE LAND SURVEYORS ACT  
 5-9 1990

SIGNED: Charles John Barsuglia  
 L.S. or R.C.E. No.: 5396

COUNTY SURVEYOR'S CERTIFICATE  
 THE CORNER RECORD WAS RECEIVED \_\_\_\_\_ 19\_\_\_\_\_  
 AND EXAMINED AND FILED 4-18 1990  
 BY: W. Bruce Stinson  
 TITLE Madera Co. Eng'r

DOCUMENT No. \_\_\_\_\_  
 STATEMENT ON BACK OF SHEET YES  NO