

CORNER RECORD

COUNTY OF Madera T. 75 R. 21E MERIDIAN CALIF.

CORNER TYPE: GOV'T CORNER  MEANDER  RANCHO  CONTROL  OTHER

CORNER IDENTIFICATION --- DATE OF VISIT Oct. 22 19 74



E/4 Coe. Sec. 36, T. 75, R. 21E, M.D.B. & M.

CORNER -- LEFT AS FOUND  FOUND & TAGGED  REESTABLISHED  OBLITERATED CORNER   
REBUILT

PHYSICAL DESCRIPTION OF CORNER FOUND; EVIDENCE & METHOD USED TO IDENTIFY OR REESTABLISH:

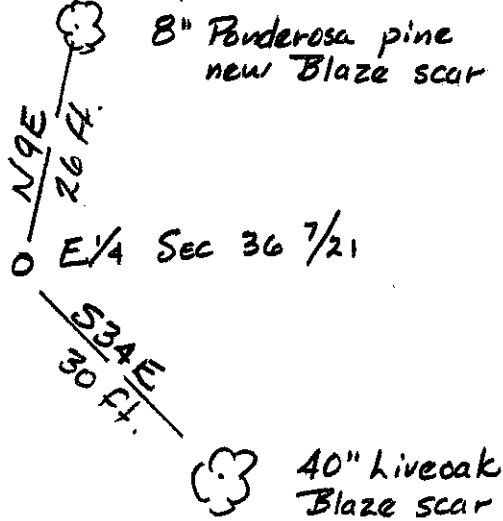
Found 3/4" iron pipe with 1917 GLO Brass Cap

PHYSICAL DESCRIPTION OF MONUMENTS REBUILT OR PERPETUATED:

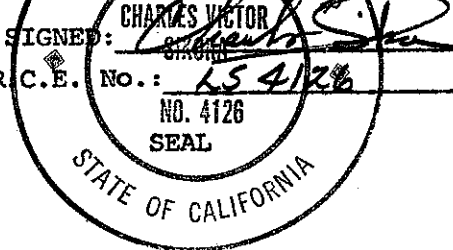
N.A.

CALIFORNIA COORDINATE SYSTEM ORDER: FIRST  SECOND  THIRD   
STATIONS USED: NOS (USC & GS)  STATE  COUNTY  OTHER  STATION \_\_\_\_\_  
STATION \_\_\_\_\_ ZONE \_\_\_\_\_ ELEVATION \_\_\_\_\_ NORTHINGS (Y) \_\_\_\_\_  
EASTINGS (X) \_\_\_\_\_

SKETCH: (INCLUDE REFERENCE TIE OR WITNESS POINTS, REMARKS AND TOPO OF AREA)



SURVEYOR'S CERTIFICATE  
THIS CORNER RECORD WAS PREPARED BY ME OR UNDER MY DIRECTION IN CONFORMANCE WITH THE LAND SURVEYORS ACT ON Oct 23 19 74



L.S. or R.C.E. No.: LS 4126

COUNTY SURVEYOR'S CERTIFICATE  
THE CORNER RECORD WAS RECEIVED Oct 25 19 74 and examined and filed Oct. 28, 1974  
BY: \_\_\_\_\_  
TITLE: \_\_\_\_\_

DOCUMENT No. 74-27-3  
STATEMENT ON BACK OF SHEET  
YES  NO