

CORNER RECORD

COUNTY OF MADERA T. 7S R. 21E MD MERIDIAN CALIFORNIA

CORNER TYPE: GOV'T. CORNER  MEANDER  RANCHO  CONTROL  OTHER

NEAREST IDENTIFICATION - DATE OF VISIT. Aug 20 19 75



W 1/4 COR SEC 35, T7S, R21E, MDB&M

CORNER - LEFT AS FOUND  FOUND AND TAGGED  REESTABLISHED OBLITERATED CORNER  REBUILT

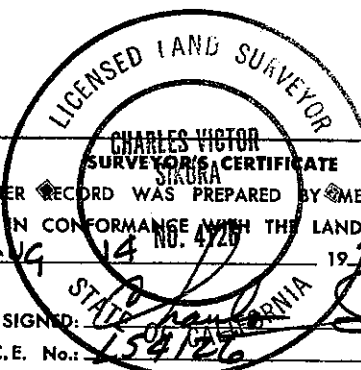
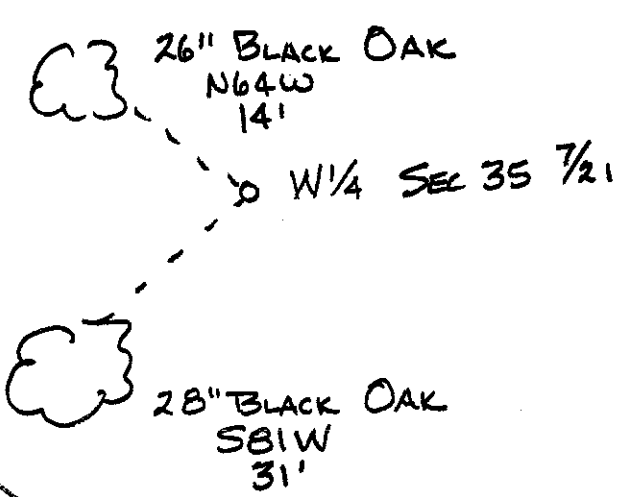
PHYSICAL DESCRIPTION OF CORNER FOUND; EVIDENCE AND METHOD USED TO IDENTIFY OR REESTABLISH

FOUND 1" I.P. IN ROCK MOUND TAGGED RCE 17624

PHYSICAL DESCRIPTION OF MONUMENTS REBUILT OR PERPETUATED

CALIFORNIA COORDINATE SYSTEM ORDER: FIRST  SECOND  THIRD   
STATIONS USED: NGS (USC & GS)  STATE  COUNTY  OTHER  STATION \_\_\_\_\_ STATION \_\_\_\_\_  
ELEVATION \_\_\_\_\_ NORTHINGS (Y) \_\_\_\_\_ EASTINGS (X) \_\_\_\_\_

SKETCH: (Include reference tie or witness points, remarks and topo of area)



THIS CORNER RECORD WAS PREPARED BY ME OR UNDER MY DIRECTION IN CONFORMANCE WITH THE LAND SURVEYORS ACT ON Aug 14 19 75

SIGNED: [Signature]  
L.S. or R.C.E. No.: 154126

COUNTY SURVEYOR'S CERTIFICATE

THE CORNER RECORD WAS RECEIVED Aug 15 19 75 AND EXAMINED AND FILED Aug 18 19 75

BY: [Signature]  
TITLE: Civil Engr. Asst.

DOCUMENT No. 75-28-03

STATEMENT ON BACK OF SHEET

YES  NO