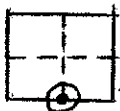


CORNER RECORD

COUNTY OF MADERA T. 7S R. 21E. M.D.B.4 MERIDIAN CALIF.

CORNER TYPE: GOV'T. CORNER ( ) MEANDER ( ) RANCHO ( ) CONTROL ( ) OTHER (  )

CORNER IDENTIFICATION --- DATE OF VISIT 6/6/77 19 77



5/4 CORNER Sec. 34/7/41

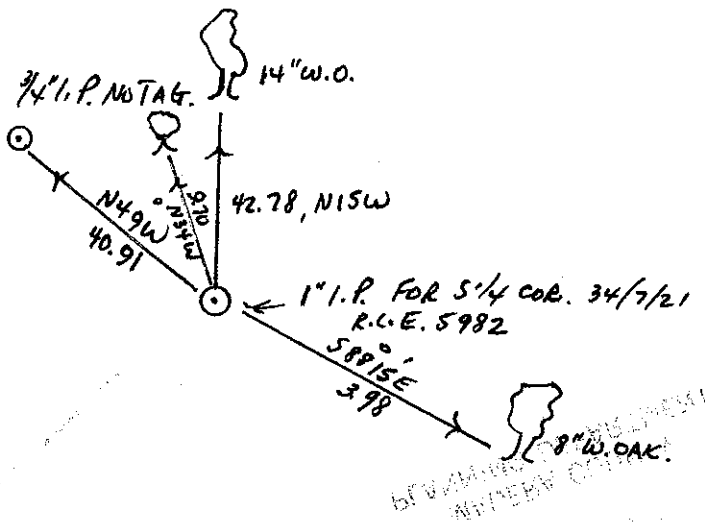
CORNER -- LEFT AS FOUND ( ) FOUND & TAGGED ( ) REESTABLISHED OBLITERATED CORNER (  )  
REBUILT ( )

PHYSICAL DESCRIPTION OF CORNER FOUND: EVIDENCE & METHOD USED TO IDENTIFY OR REESTABLISH: CORNER WAS SET BY SINGLE PROPORTION OF THE SO. LINE OF SEC. 34/7/41 AS THERE WAS NO GOOD EVIDENCE OF THE ORIGINAL BEARING TREES. THE CALLS WERE NOT ACCURATE AS TO THE LOCATION OF THE CORNER.

PHYSICAL DESCRIPTION OF MONUMENTS REBUILT OR PERPETUATED:  
SET 1" I.P. TAGGED P.C.E. 5982 FOR 5/4 COR.

CALIFORNIA COORDINATE SYSTEM ORDER: FIRST ( ) SECOND ( ) THIRD ( )  
STATIONS USED: NOS (USC & GS) ( ) STATE ( ) COUNTY ( ) OTHER ( ) STATION \_\_\_\_\_  
STATION \_\_\_\_\_ ZONE \_\_\_\_\_ ELEVATION \_\_\_\_\_ NORTHINGS (Y) \_\_\_\_\_  
EASTINGS (X) \_\_\_\_\_

SKETCH: (INCLUDE REFERENCE TIE OR WITNESS POINTS, REMARKS AND TOPO OF AREA)



SURVEYOR'S CERTIFICATE

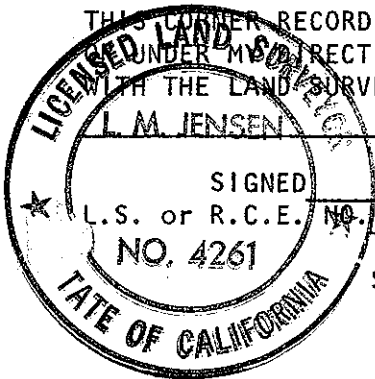
THIS CORNER RECORD WAS PREPARED BY ME UNDER MY SUPERVISION IN CONFORMANCE WITH THE LAND SURVEYORS ACT ON 6/6 19 77  
L.M. JENSEN

SIGNED

L.S. or R.C.E. NO.

NO. 4261

SEAL



COUNTY SURVEYOR'S CERTIFICATE

THE CORNER RECORD WAS RECEIVED 8-1-77 AND EXAMINED AND

FILSO

AUG 5 19 77

BY: A. Grote

TITLE: County Engineer

DOCUMENT NO. 77-13-01

STATEMENT ON BACK OF SHEET

YES ( ) NO (  )